

PUBLISHED EVERY WEEK. \$1.50 PER YEAR.

# THE FARMER'S ADVOCATE

AND HOME MAGAZINE

\*AGRICULTURE, STOCK, DAIRY, POULTRY, HORTICULTURE, VETERINARY, HOME CIRCLE.\*

Dairy and Cattle Stores  
Commissioners Dec 31, 15  
Dept. of Agriculture

ENTERED IN ACCORDANCE WITH THE COPYRIGHT ACT OF 1875.

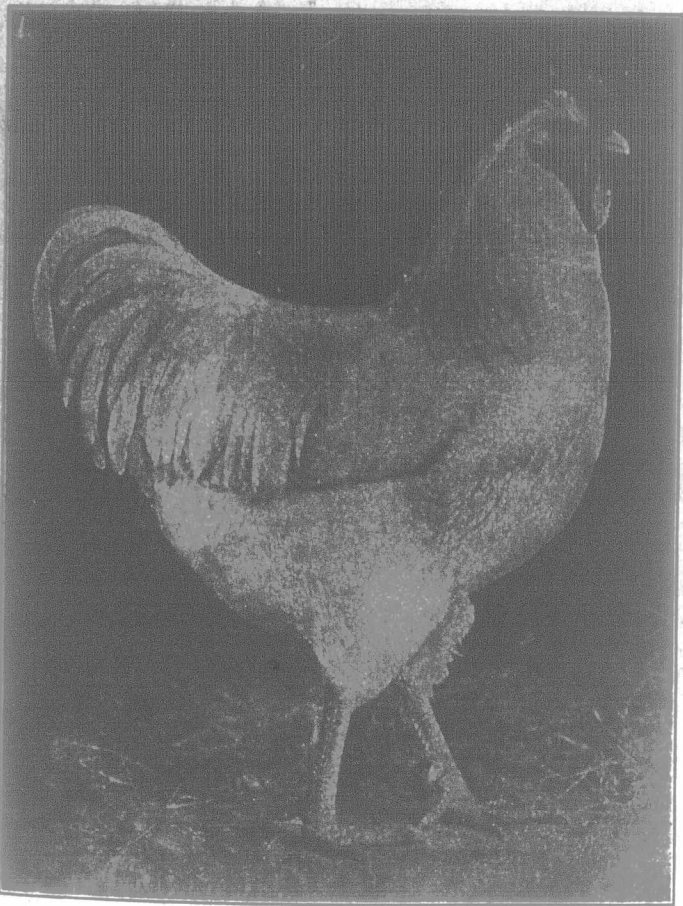
VOL. L.

LONDON, ONTARIO, OCTOBER 21, 1915.

No. 1204

## Free

We will mail to anyone interested in stock or poultry one of our 80-page books on the common diseases of stock or poultry, also giving full description of all the different valuable remedies and foods we manufacture for stock and poultry. It tells how to build an inexpensive hen-house, even to the amount and dimensions of lumber required. This book contains 400 recommendations for our Stock and Poultry Remedies from prominent stock and poultry breeders all over Canada.



London, Ont., July 23, 1915.

The W. A. Jenkins Mfg. Co., London, Ont.  
Dear Sirs,—Enclosed you will find photograph of one of our "Dulmage" White Rocks, in order that you may see what Royal Purple has done for us. Isn't he a big-bodied, vigorous specimen?

About three years ago we had a hen nearly dead with the roup, and after trying a number of remedies, sought the advice of Mr. Wm. McNeill, the well-known poultry judge, and he advised us to kill her at once, as it was impossible to save her life. She was not a valuable bird, and we thought it better to experiment further, as we might have a more valuable bird to treat later on. We got a package of your Roup Specific, and it relieved her at once—at the end of a week's time she was completely cured.

We have put a little of your Roup Cure in the water, from time to time, and have only had one case of roup in our immense flock in the last three years.

We now use your Royal Purple Poultry Specific, and your Lice Powder, and it certainly does kill the lice quickly.

We might also mention the excellent results we have had from your Chick Feed. We note you use only white corn, and this is very important where white birds are raised for exhibition purposes. Yellow corn causes a sappiness in the mill and a creaminess in the feather, which can be completely eliminated by the use of white corn. Apart from this the mixture seems to be proportioned properly, and our chicks thrive on it. We certainly would not be without your Chick Feed, even if we have to pay a little more for it.—Yours very truly,

MCCONNELL & FERGUSSON.

## Royal Purple Poultry Specific

Don't spend your time wondering why a black hen lays a white egg; get the egg; Royal Purple Poultry Specific will help you

The wise poultryman knows the importance of carrying his poultry through the moulting time in a healthy condition if he wants them to lay during the late fall and winter months. Our Royal Purple Poultry Specific used in the mash will keep your hens healthy, make them digest their hard winter feed properly and will make them lay just as well in winter as in summer. We would advise you to commence using it at once, as it is most important to look after your poultry's health between the 1st of October and Christmas. If you can get your poultry through this season healthy, and digesting their food properly, they will lay all winter for you, when eggs are at their highest price. You can fatten your turkeys, ducks, geese and chickens in just two-thirds the time by using this Poultry Specific in the food, thereby saving food and labor. We guarantee this Poultry Specific to do exactly as represented, or we will refund your money if dissatisfied.

Royal Purple Poultry Specific put up in 25c. and 50c. packages, \$1.50 tins, and in large tins that hold four times as much as a \$1.50 tin for \$5.00. A 50c. package will last 25 hens seventy days. A \$1.50 tin will last 100 hens seventy days. A \$5.00 tin will last 400 hens seventy days.

### ROUP CURE

There is just one way you can keep your poultry free from roup after it gets into your flock, and that is by using our Roup Cure in the drinking water. Read what Messrs. McConnell & Fergusson have to say. They are one of the largest concerns in Canada breeding White Rocks. Thousands of others throughout Canada have had the same experience with our Roup Cure. Put up in 25c. tins; by mail, 30c.

**ROYAL PURPLE STOCK SPECIFIC**, the great farm animal conditioner. This should be used by all stock raisers when their animals are taken off the green pasture and put in stables. It makes them digest the winter food properly and keeps them from having their digestions upset by change of food. Your cows will gain from three to five lbs. of milk per day while in the stable if our Royal Purple Stock Specific is used. It costs less than one cent a day per animal for Royal Purple Stock Specific and saves one-quarter the feed.

Put up in 50c. packages, \$1.50 tins, and large tins that hold four times as much as a \$1.50 tin for \$5.00.

### We also manufacture:

Royal Purple Liniment,  
Eight-ounce bottles, 50c.

Royal Purple Gall Cure,  
25c. and 50c. tins.

Royal Purple Disinfectant,  
25c., 50c. and \$1.00 tins.

Royal Purple Cough Cure,  
50c. tins.

Royal Purple Worm Powders,  
25c. tins.

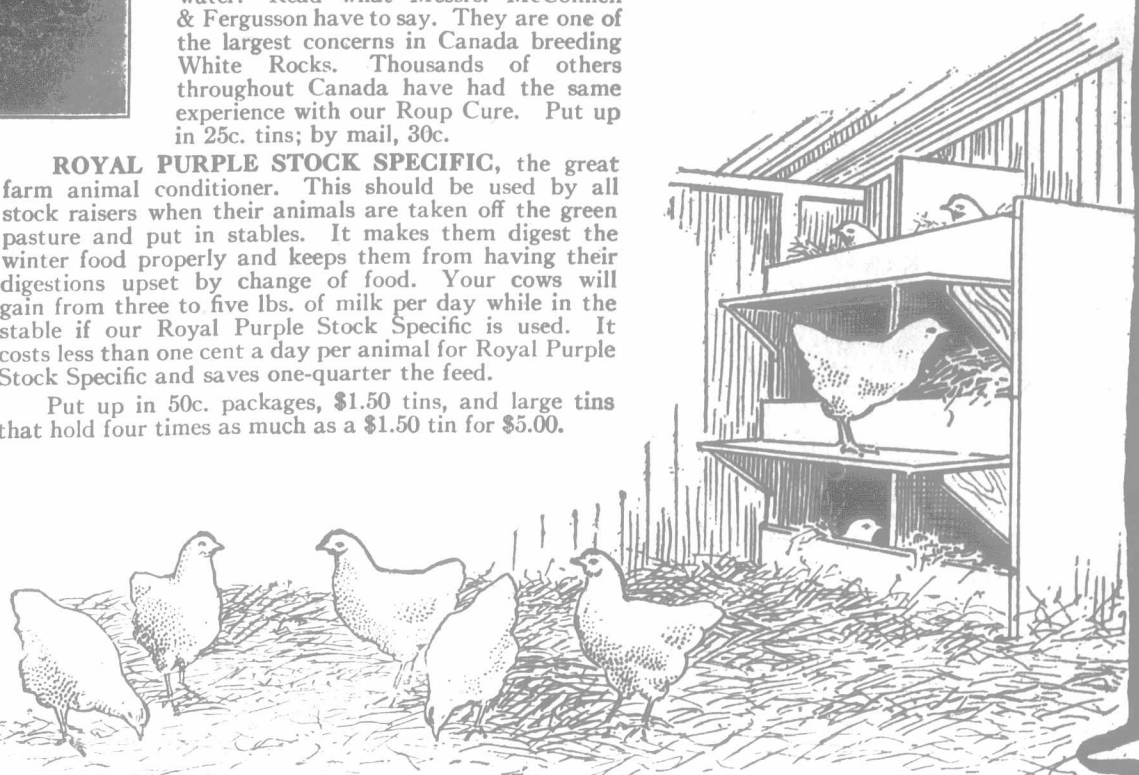
Royal Purple Lice Killer,  
25c. and 50c. tins.

Royal Purple Linseed Meal.

Royal Purple Calf Meal,  
25, 50 and 100-lb. bags.

Royal Purple Chick Feed,  
25c. pkgs. and 100-lb. bags.

If you can not get any of these goods from our agent in your town, we will send any 25c. package by mail, 30c.; 50c. packages by mail, 60c. Larger packages will be sent by express or freight.



Made Only by The W. A. Jenkins Mfg. Co., London, Ont.