

THE  
COMING  
SEWING MACHINE  
IS THE

**"NEW RAYMOND"**

SEE ADVERTISEMENT  
ON PAGE 337.  
CHARLES RAYMOND,  
GUELPH,  
Ont.

**THOS. WORSWICK,**

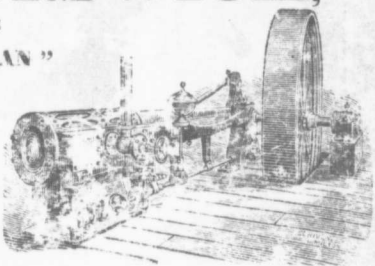
MANUFACTURER OF THE

**"BROWN" AND "ALLAN"**

**AUTOMATIC CUT-OFF  
ENGINES,**

WITH OR WITHOUT CONDENSER.

This is the only place in Canada that Automatic  
Cut-off Engines and their Appliances are  
made a Specialty.



**GUELPH, ONT.**

**THOS. MCKAY & CO.,**

MANUFACTURERS OF

**Granulated, Fine & Regular Grade Oatmeals**

CHOICE STRONG BAKERS & FANCY FAMILY FLOURS,

*Ottawa and New Edinburgh Roller Mills,*

**OTTAWA, ONTARIO, CANADA.**

**THE J. M. BRUNSWICK & BALKE CO.,**

MANUFACTURERS OF

**BILLIARD AND POOL TABLES,**

WITH THE CELEBRATED QUICK

**MONARCH CUSHIONS.**

Dealers in all kinds of Billiard and Pool Tables, also Bowling Alley Balls  
and Billiard Balls.

Office and Salesroom **ROSSIN HOUSE,**  
**TORONTO.**

**J. & J. TAYLOR,**  
MFRS.  
OF  
**— FIRE AND —**  
**BURGLAR PROOF SAFES,**  
TORONTO,  
ONTARIO.