

Aspect of

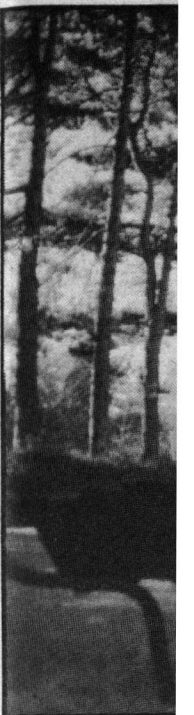
Story and photos by Barry Steeves

Clayton's idea of England was of its maintained Victorian conservatism, heavily accentuated by that December's foggy rain. The afternoon's precipitation pelted softly through leafless trees, and hushed droplets were dampened by the wet grass. In the distance, Christmas carollers sang whispered songs, but everybody else had left for-home from Oxford. Across a field and beyond thick stands of trees loomed the grey college towers, the heart of the town which is the quintessence of England. Thus, the U of A student set out; in search of excitement, and to make discoveries, at that other great university.

This traveller looked like but a speck, silently moving closer, from the far end of the land. But as the rain's tempo hardened, and the young man neared, a uniform regularity set in. Clayton's feet were falling into confident infallible striding. Across the fields and into the trees he charged, oblivious of the rough ground as his boots crushed twigs. "When I'm in control, nothing can stop me!" he thought aloud adventurously; those bell-towers were the objective in mind. A knotty grin was what little one could see of his boyish face, and with high knee lifts, he continued on into the nightfall.

He jumped darkened obstacles spaced through sections of trees, first one fence and then another. He tossed his backpack over a tall picket fence, and a disturbed owl took flight, as his camping gear came crashing down. When he jumped the fence to join his pack, the rain had stopped falling, and everything fell contently still. Only the sound of crumpling plastic broke the peace, as Clayton's hands fumbled through his pack to yank out a pack of olives. Spitting pits all the way down the path he went along, he followed narrow waterways, crossed small bridges, and was being lead down deeper into the woodland.

He could see only trees and more trees, till they unveiled a towering stone wall. It stood across a waterfilled moat, over which the walkway's bridge crossed, as did the young man who was inquisitively searching. On the other side, ran an intersecting perpendicular pathway, following the wall in both directions. To the left was only darkness, but to the right, the path lead to a climable gatehouse, adjoining the wall. The student, eager to accept any invitation, dropped his gear where he stood, and scrambled up the building, for the better position.



From atop vision, with hum through illumina was, however, q by the climber, the colleges bey wall he manoeu roof's implanted wire, and other i nalia. Nothing c Clayton was ready to reach fr sound of footfal anxiously as the Keys jangled on youth clung on houette against Time dragged down below. I young man was mouth hanging But before Clay less intentions, closing doors th not so much a side-stepped, course into the Quietness en of relief, before heart quickene rush of desire. I yard surroundi

THE ICE PEDLAR

**CUBED, CRUSHED
50 lb. and 25 lb.
PARTY ICE BAGS**

- PLASTIC FLEXI GLASS 7 oz. liquor glass case of 1,000 - \$25.95.
- Plastic wine, beer and liquor glasses
- Plates, napkins, table covers, etc.
- Beer and wine ice tubs for rent
- Free delivery on large and small orders
- Ice sculptures, large, medium, and small
- Liquor Dispensers Rental
- Liquor and beer tickets
- Plastic 9" white plates, 250 pk., \$17.95
- Wholesale prices on cases of party supplies

**12136 - 121A Avenue
Edmonton, Alberta
Phone:
455-8203**

RUGBY

Druids Athletic Association

Training now in progress.
All newcomers welcome.
For more info call:
DAVE 466-1093



Laser Image

WORD PROCESSING

Will soon be offering an extensive
RESUME formatting and update
service with do-it-yourself
preparation assistance.

**Student Discounts on all
Word Processing Services**

434-7482

APARTMENT
DWELLER



STOR

**YOUR
MINI-WAREHOUSE
PRIVATE SELF-STORAGE**

Going away for the summer, need space for personal belongings or

INDIVIDUAL UNIT 1.52 x 1.52 (5' x 5') to 9.12 x 9.12
CONCRETE WALLS, PLUGS & LIGHTS
3 ACRES OF OUTSIDE STORAGE
FOR CARS, TRUCKS & RECREATION VEHICLES
FENCED, LIGHTED, RESIDENT MANAGED
GUARD DOG, OPEN 7 DAYS

FURNITURE

FILES

RECORDS



AAA Storage Mini Warehouse
Winterburn Overpass
HIGHWAY 16 WEST

**PHON
470-3000**

NORTH SIDE
HIGHWAY 16 WEST
GO 1 BLOCK WEST
UNDERNEATH THE OVERPASS
WINTERBURN SERVICE

CONTRACTORS
EQUIPMENT