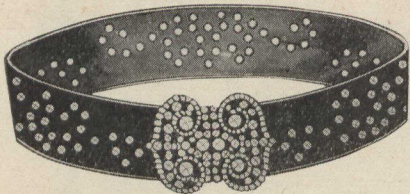
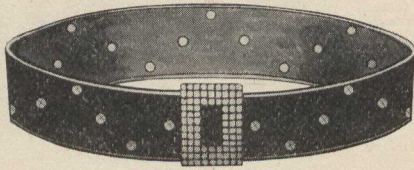


# WOMEN OF GOOD TASTE APPRECIATE SUCH GIFTS AS THESE

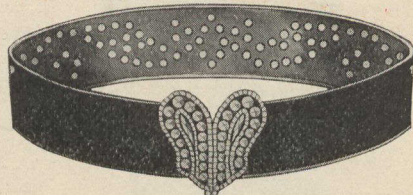
The Belts have just arrived from Paris, the Bags from Berlin and New York. Each article is the latest novelty of its kind.



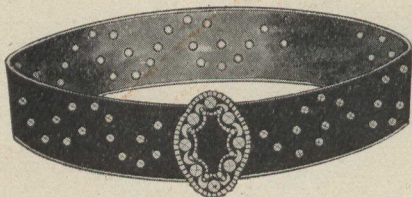
Y4. Belt as illustrated, colors black, brown, navy and white, each .75



Y1. Belt as illustrated, colors black, brown, navy and white, each .48



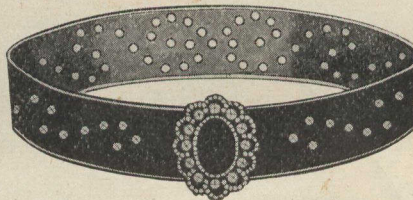
Y5. Belt as illustrated, colors black, brown, navy and white, each .75



Y2. Belt as illustrated, colors black, brown, navy and white, each .48



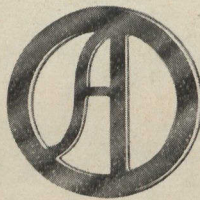
Y6. Belt as illustrated, black only, cut steel buckle, each .98



Y3. Belt as illustrated, colors black, brown, navy and white, each .68



Y7. Grain Leather Bag, as illustrated, black only, each .25



Very handsome brass initial, mounted on any bag bought from Ad. for 25c.



Y8. Purse Bag, strap handle on back, black only, each .38



Y9. Grain Leather Bag, as illustrated, black only, each .48



Y10. Seal Grain Bag, metal frame, special strap handle, colors black, brown and green, each .98



Y11. Seal Grain Leather Bag, 7-inch frame, fitted with purse, moire lining . . . 1.00



Y12. The New Yorker, double strap handles, moire lining, inside purse, colors black, brown, green and tan, each . . . 1.25



Y13. Seal Grain Bag, as cut, specially neat handle, covers 8-inch frame, inside purse, each . . . . . 1.25

Address Orders to—

THE ROBERT

# SIMPSON

COMPANY, LIMITED

TORONTO, CANADA