

Dizzy and Faint Spells

Are Warnings of Heart Trouble That Should Be Heeded.

Those feelings of weakness, those dizzy spells and "all gone" sinking sensations, which come over some people from time to time are warnings that must not go unheeded. They indicate an extremely weakened condition of the heart and a disordered state of the nerves.

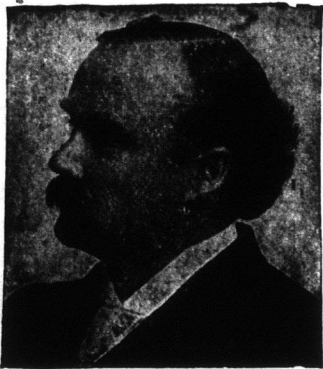
Those who are wise will start taking Milburn's Heart and Nerve Pills before their case becomes hopeless. They have no equal for strengthening the heart and invigorating the nerves.

Mrs. Emil Brooks, Upper Gagetown, N.B., writes:—"All last summer and winter I had dizzy and weak spells, headaches and fainting and blind spells. A friend recommended Milburn's Heart and Nerve Pills to me. I had only taken two boxes when I found great relief. I highly recommend them to all who suffer from heart trouble."

Milburn's Heart and Nerve Pills are 50c. per box at all dealers or mailed direct on receipt of price by The T. Milburn Co., Limited, Toronto, Ont.

CANCER

R. D. Evans, discoverer of the famous Evans' Cancer Cure, desires all who suffer with Cancer to write to him. The treatment cures external or internal Cancer.



R. D. EVANS Brandon Man.

PILES PAY IF CURED
We pay postage and send FREE Red Cross File and Mistle cure.
REACO, Dept. 22 Minneapolis, Minn.

When writing advertisers, please mention The Western Home Monthly

Fashions and Patterns

A Seasonable Style. 2277—This coat model is fine for double faced woollens, for broadcloth, velour, corduroy, serge, plush and other pile fabrics. The lines are simple and stylish. The garment is easy to develop. Mixed cheviot suiting

in green and brown tones could be combined with green broadcloth for collar and cuff facings. The pattern is cut in 7 sizes: 34, 36, 38, 40, 42, 44 and 46 inches bust measure. Size 38 requires 6½ yards of 54-inch material. A pattern of



this illustration mailed to any address on receipt of 10 cents in silver or stamps.

A Very Smart Style For The Growing Girl. 2262—Plaid suiting, checked or striped gingham, chambray, repp, galatea, seersucker, crepe, serge and gabardine, are good for this style. It is also nice for taffeta and velvet. The pockets may be omitted. The waist portions are joined to a straight plaited skirt. The pattern is cut in 4 sizes: 6, 8, 10 and 12 years. Size 10 requires 4¼ yards of 36-inch material. A pattern of this illustration mailed to any address on receipt of 10 cents in silver or stamps.

A Natty Suit For The Growing Boy. 2259—Linen, galatea, gingham, cheviot, serge, mixed suiting, corduroy and velvet are nice for this model. The belt may be omitted or finished separately. The trousers are straight at the lower edge and close at the centre front. The pattern is cut in 4 sizes: 4, 6, 8 and 10 years. Size 8 requires 3½ yards of 44-inch material. A pattern of this illustration mailed to any address on receipt of 10 cents in silver or stamps.

A Unique and Stylish Model. 2263—Navy blue serge would be fine for this, with trimming of braid or buttons. It is also nice for satin, silk and velvet; likewise broadcloth, gabardine, velour, poplin and corduroy. The sleeve is a one-piece model, finished with a neat cuff. The dress closes at the left side, under the panel. For simplicity, chic and comfort, this style has much to recommend it. The pattern is cut in 3 sizes: 16, 18 and 20 years. Size 18 requires 5¼ yards of 44-inch material. The skirt measures about 2 yards at the foot. A pattern of this illustration mailed to any address on receipt of 10 cents in silver or stamps.

A Practical Model. 2268—This style has one good point, in that it covers the dress well, and is cut wide over the shoulders. The pockets are ample, and the apron is confined to the figure, with a neat belt. Striped seersucker, checked gingham, drill, lawn, cambric or alpaca, could be used for its development. The pattern is cut in 4 sizes: Small, 32-34; Medium, 36-38; Large, 40-42; and Extra Large, 44-46 inches bust measure. Size medium will require 4¼ yards of 36-inch material. A pattern of this illustration mailed to any address on receipt of 10 cents in silver or stamps.

A Chic Dress For Mother's Girl. 2285—This model would be nice in serge, velvet gabardine, voile or cashmere. It could be made of plaid or checked suiting, with plain material for the waist and pockets, or vice versa. The skirt is in two pieces. The facing on pocket and trimming on cuff may be omitted. The pattern is cut in 4 sizes: 6, 8, 10 and 12 years. Size 10 requires 3½ yards of 44-inch material. A pattern of this illustration mailed to any address on receipt of 10 cents in silver or stamps.

A Popular Style. 2006—Ladies' House Dress, with reversible closing, with or without chemisette, and with sleeve in wrist or elbow length. Seersucker, gingham, chambray, lawn, cashmere, flannelette, alpaca, brilliantine and percale are nice for this style. The fronts may be closed from left to right or vice versa, and the sleeve finished at wrist or elbow length. The pattern is cut in 7 sizes: 34, 36, 38, 40, 42, 44 and 46 inches bust measure. It requires 7¼ yards of 36-inch material for a 36-inch size. The skirt measures about 2½ yards at the foot. A pattern of this illustration mailed to any address on receipt of 10 cents in silver or stamps.

A Popular Style. 1915—Ladies' Apron. This model is good for drill, denim, saaten, lawn, batiste, cambric, seersucker, gingham and muslin. It is cool and comfortable, and its fulness may be confined at the waistline, under the belt. The pattern is cut in 3 sizes: Small, medium and large. Medium size requires 4¼ yards of 36-inch material. A pattern of this illustration mailed to any address on receipt of 10 cents in silver or stamps.

A Becoming Model For Mother's Girl. 2274—This style is nice for serge, gingham, percale, galatea, chambray, repp, poplin, voile, velvet or taffeta. The pockets may be omitted. The sleeve is a one-piece model. The pattern is cut in 4 sizes: 6, 8, 10 and 12 years. Size 10 requires 3½ yards of 44-inch material. Braid or embroidery will be nice for trimming on this design. A pat-

CHRISTMAS letters and acknowledgements should be written on

French Organdie

the stationery which has that much desired touch of refinement.

Ask your stationer for it.

French Organdie paper and envelopes are packed in handsome papeterie form (as well as in other styles) and would make an acceptable Christmas gift.

22-10-17

Barber-Ellis
Limited
Toronto, Canada.
Brantford, Vancouver,
Winnipeg, Calgary.

French Organdie

Note Paper
Envelopes
Papeteries
and Tablets