

## Miners Wanted To Chew BULL DOG TOBACCO,

Because it is the only Tobacco  
which does not excite **Thirst**  
for Water after using  
**TRY IT!**

The St. Lawrence Tobacco Co., Ltd.

—Montreal—  
—W. B. Reynolds, Halifax Representative—

## MINING SHOVELS

our 'FENERTY' Brand

COOK'S PAN SHOVELS,  
COAL TRIMMERS SHOVELS,  
SCRAPER SHOVELS, ETC.

ARE USED BY

*The Largest Mines in Canada*

MANUFACTURED BY  
**The HALIFAX SHOVEL Co.**

HALIFAX, N. S.

ALL GOODS GUARANTEED.

*Genuine Garlock Parkings*  
FOR ALL PURPOSES.

**Pipe and Boiler Coverings,  
ENGINEERS SUPPLIES.**

also

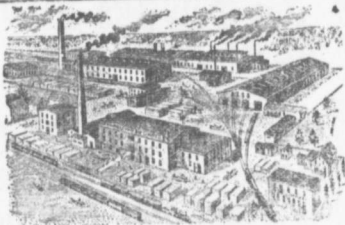
"Tauril" High Pressure Jointing  
the Best Sheet Packing yet  
Produced.

**THE GARKOCK PACKING CO.**  
HAMILTON, ONTARIO.

Used by Collieries in Lancashire, Staffordshire & Yorkshire

•**XTERRA'** COLLIERY LAMP OIL  
For Marnaut, Muesels Deflector or Clowd Lamp.

PURE WHITE FLAME. LOW PRICE.  
**E. WOLASTON,** Dutton St. **MANGHESTER**  
Sole Representatives for Canada, **AUSTEN BROS.**  
Halifax, N. S.



—MANUFACTURERS OF—

RAILWAY  
STREET and  
MINING

# CARS,

CAR WHEELS Church Pews.  
FORGINGS & Fittings for Stores, Schools &c.  
CASTINGS A SPECIALTY.

Large Stocks of Foreign and Domestic Lumber on Sale.

**Rhodes,** BUILDING MATERIALS  
GENERAL

**Curry & Co., Ltd.**

Branch **ROBBIE STREET** **AMHERST N. S.**  
HALIFAX, N. S.

## INTERCOLONIAL RAILWAY

THE

# MARITIME EXPRESS

Is the

Most Comfortable Train

in Canada.

Connecting Train  
leaves Stellarton 15,05

—FOR—

Quebec and Montreal.

Dining  
Car  
Service

Breakfast 75c.  
Luncheon 75c.  
Dinner 51.00

Direct connections at Bonaventure Union Station,  
Montreal, with Grand Trunk Railway trains for all  
points in Ontario and the West.

—and to—  
DETROIT, BUFFALO, NIAGARA FALLS  
AND CHICAGO.