

## DRAUGHTS-CHECKERS

All communications to this department must be addressed directly to the Checker Editor, Mr. W. Forsyth, 36 Grafton St.

## TO CORRESPONDENTS.

O. McGill, Yarmouth.—Yours is the only correct solution to Problem 285 that we have received.

## SOLUTION.

PROBLEM 285.—The position was: black men 17, 20, 23; kings 26, 27; white men 25, 28, 30; kings 9, 16:

White to play and win.  
25 23 13 22 19 24 18 22  
17-21 27-31 27-32 White  
9 13 16 19 22 18  
26-17 23-27 20-27

## GAME 176.—"Cross."

Recently played between Messrs. Hamilton (white) and Granville (black).

11-15 11-18 7-11 19-15  
23 18 22 15 25 23 10 7  
8-11 9-14 11-15 3-10  
27 23 25 23 21 11 30 26  
4-8 5-9 24-27 15-8  
a 32 27 22 17 31 24 4 11  
15-19 9-13 15-18 1-6  
24 15 17 10 22 15 26 23  
10-19 19-24 13-31 6-9  
23 16 28 19 15 10 23 19  
12-19 8-11 31-27 9-13  
27 24 15 8 24 19 11 15  
7-10 6-24 27-23 10-14  
24 15 8 4 19 15 19 16  
10-19 2-7 23-19 14-17  
18 15 29 25 15 11 15 18

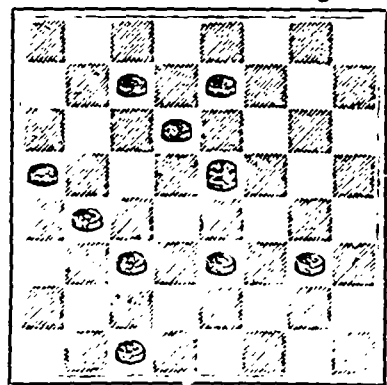
w wine.

a This is a move that is seldom made in the "Cross," but led to the winning of a game in the Auckland Championship tournament recently.

## PROBLEM 287.

By G. B. Allen in the American Checker Review.

Black men 6, 7, 10, 13, king 15.



White men 17, 22, 23, 24, 30

White to move and win.

Several correspondents of the A. C. R. call this an "old chestnut," but though it be so, we believe that many players who have not seen it before will find it a hard nut to crack.

## T. C. ALLEN &amp; CO.,

Will offer for ten days only,

LADIES' & GENTLEMEN'S PURSES,

LADIES' HAND BAGS.

Chatahale Belts and Bags, Albums, &c.

GOOD GOODS! GREAT BARGAINS!

T. C. ALLEN & CO.,

BOOKSELLERS, STATIONERS AND PRINTERS.

124 GRANVILLE ST.

If you wish to advertise anything, anywhere, at any time, write to GEO. F. ROWELL & CO., No.



Old Chum

(CUT PLUG.)

OLD CHUM

(PLUG.)

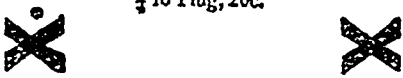
No other brand of Tobacco has ever enjoyed such an immense sale and popularity in the same period as this brand of Cut Plug and Plug Tobacco.

Oldest Cut Tobacco manufacturers in Canada.

Ritchie & Co.

MONTREAL.

Cut Plug, 10c. 1 lb Plug, 10c.  
1 lb Plug, 20c.



SPOONER'S

PHENYLE

(DISINFECTANT PATENT)

GERMICIDE

PREVENTS

AND

CURBS

Dysentery

Pink Eye

SORENESS

AT THE

NOSE

IT CURES

HORSES

HEALTHY

AND THE

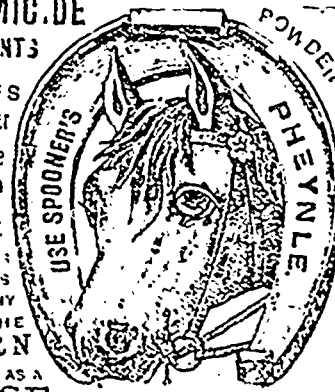
BARN

SWEET AS A

ROSE

BEST DISINFECTANT ON EARTH.

AUSTIN BROS., HALIFAX.



REGULATE THE  
STOMACH, LIVER AND BOWELS,  
AND  
PURIFY THE BLOOD.

A RELIABLE REMEDY FOR

Indigestion, Biliousness, Headache, Constipation, Dyspepsia, Chronic Liver Troubles, Diarrhoea, Bad Complexion, Dysentery, Offensive Breath, and all Disorders of the Stomach, Liver and Bowels.

Ripans Tablets contain nothing injurious to the most delicate constitution. Pleasant to take, safe, effective. Give immediate relief.

Sold by Druggists. A trial bottle sent by mail on receipt of 10 cents.

THE RIPANS CHEMICAL CO.

10 SPRUCE STREET, NEW YORK CITY.

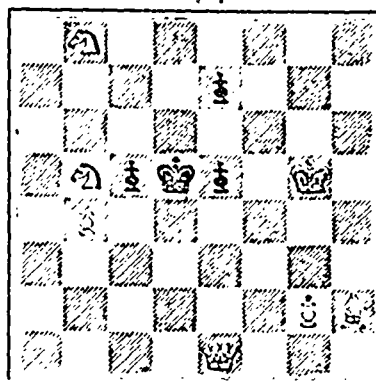
Halifax Printing Company,  
161 Hollis Street.

## CHESS.

## PROBLEM No. 121.

Let's Household Magazine.

Back 4 pieces.



White 7 pieces.

White to play and mate in two moves

## GAME No. 124.

From the Glasgow Herald.

M. Rosenthal, of Paris, in his chess column in *Le Monde Illustré* organizes and records magnificent correspondence tournaments. The second tourney started in December, 1889, attracted 9 players in Russia, 7 in France, 2 in England, 2 in Austria, 2 in Italy, 1 in Sweden, and 1 in Greece. The first prize (value 2,500 francs) is a suitable bronze statuette by an eminent French sculptor, and it has fallen to Herr J. Berger, of Grez.

The performance of the winner is truly remarkable. He had to play two games with every other competitor, and out of all the games thus played by correspondence with adepts of many nations he did not sustain a single defeat. He won every game with the exception of three, in which he had to content himself by drawing.

Herr Berger is illustrious as a problem composer. He has brought out an excellent treatise on end-games and, like our famous amateurs, Messrs W. Wayte, W. T. Pierce, and G. B. Fraser, he has done much to advance our theory of the openings. As a specimen of his play, the following game, played in the tourney advertised to with M. Norlin (another composer) will be found entertaining.

## RUY LOPEZ.

White.  
Norlin.

Black.  
Berger.

1 P to K4  
2 Kt to B3  
3 B to K5  
4 Castles  
5 P to Q4  
6 B to Q3  
7 P to B4  
8 BP takes P  
9 R to K sq  
10 B takes Kt  
11 Kt to B3  
12 R takes P  
13 B to K5  
14 Q takes B  
15 Q to K3  
16 R takes P  
17 R takes R ch  
18 Kt to K4  
19 R to K sq  
20 Q to Q3  
21 P to KKt3  
22 K to K2  
23 P to K3  
24 R to Q sq  
25 Kt takes B  
26 B to B4  
27 B to B sq  
28 P to QKt4  
29 P to QR3

30 Q to K4  
31 B to Q2  
32 Q to Q5  
33 R to QB sq  
34 R to R7  
35 K to R3  
36 K to Kt4  
37 R to Q7  
38 Q to K4  
39 Q to Q5  
40 Q to K4  
41 B to R5  
42 Q to Kt sq  
43 Q to K6  
44 K to K3  
45 Q to B5  
46 Q to K7  
47 Q to B6  
48 Q takes R  
49 P to Kt4  
50 Q takes Q  
51 K to Kt3  
52 K to B2  
53 K to K2  
54 K to Q2  
Q to B sq  
Q to Q2  
Q to R5  
Q takes RP  
Q takes KK P1  
Q to K8  
Q to K3  
Q to Q5 ch  
Q to Kt7  
Q to Q5 ch  
Q to R2  
P to Q4  
Q to Kt sq  
P to Q5  
Kt to K6  
R to B4  
R to K4  
Q to QB sq  
Q takes R ch  
Q to Q4  
Kt takes Q  
P to K4  
P to K5  
K to Kt2  
K to B3  
Resigns.

There is not much fault to be found with the loser's play prior to his 33rd move. It might have been better on his 17th to play R to K4, and on 24th, B to B4; while, probably, on his 28th it would have been wiser to advance the pawn one square less.

The real mistake occurred with White's 33rd and 34th moves, M. Norlin overlooking Herr Berger's response of 31, Q takes Kt P.

The position at that point was as pretty as critical. Obviously, if White replied 35 B takes Q, Kt to K6 ch, etc., would have gained the day for Black.

There was a reason why on the 46th move White did not play Q takes P—namely 46, Q to QB sq. 47, R to Q8. P to K5 ch. 48, K to B4 (best) Kt to Kt7 ch. 49, K takes P, R to K4 mate.

Are you BLOOD BUILDING and NERVE TONIC?

They supply in condensed form ALL the substances needed to enrich the blood and to rebuild the nerves, thus making them a certain and speedy cure for all diseases arising from impoverished blood, and shattered nerves, such as: anæmia, rheumatism, scientific loss of memory, crystalline, palpitation of the heart, scrofula, chlorosis or green sickness, that tired feeling that affects so many, etc. They have a specific action on the sexual system of both men and women, restoring lost vigor.

**WEEKLY MEN**

(young and old), suffering from mental worry, overwork, insomnia, excesses, or self-abuse, should take these PILLS. They will restore lost energies, both physical and mental.

**SUFFERING WOMEN**

afflicted with the weaknesses peculiar to their sex, such as suppression of the periods, bearing down pains, weak back, ulcerations, etc., will find these pills an unfailing cure.

**PALE AND SALLOW GIRLS**

should take these Pills. They enrich the blood, restore health, roses to the cheeks and correct all irregularities.

BEWARE OF IMITATIONS. These Pills are sold by all dealers only in boxes bearing our trade mark or will be sent by mail, post paid, on receipt of price—20 cents a box or 6 for \$2.50.

THE DR. WILLIAMS MED. CO.,  
Brockville, Ont., or Morristown, N.Y.

**DR. WILLIAMS' PINK PILLS FOR PALE PEOPLE**

DR. WILLIAMS' PINK PILLS FOR PALE PEOPLE

Thos. P. Connors,  
CUSTOM TAILOR.  
55 Granville St. Cor. Sackville.  
HALIFAX, N. S.