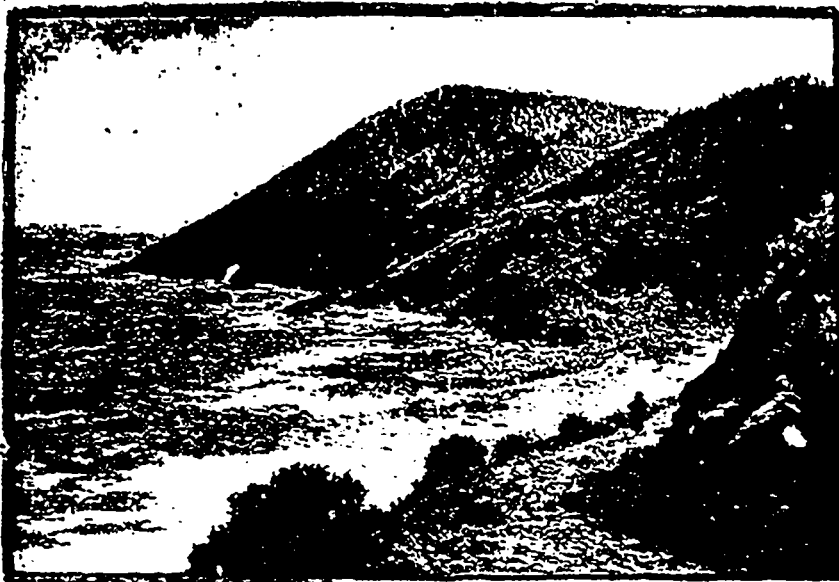


heat of the mighty ocean, under the brilliant sunlight of the Southern hemisphere.

On rounding Cape Moreton, the strange hills known as "the Glass-houses" come into view, and the increased heat will warn you that tropical Queensland is at hand. But it is not until Hinchinbrook Island is reached, a considerable distance farther)

A most wonderful geological curiosity is the "Great Barrier Reef" of Queensland, 1,200 miles long. Here may be found every kind of coral formation—atolls, fringes, and other coralline wonders. The width at one part is more than ninety miles. A period of two years was spent in its survey by Captain Stanley, brother of Dean Stanley, the ship's

surgeon and naturalist being Mr. Huxley, now Professor Huxley, and the artist Mr. Brierly, now Sir Oswald Brierly. North of Hinchinbrook Island, whose hills tower 2,500 feet above the sea, there is surpassingly beautiful scenery for many miles along the Queensland coast. Cardwell, with its fine harbour, is passed—a lovely place, backed by a



MOUTH OF ST. GEORGE'S RIVER.

(From a Photograph by J. W. Lindl.)

north, that the beauty of Queensland coast scenery comes into view. There magnificent vegetation is seen, extending down to the marge of the sea. Queensland has many specialties impossible in more temperate latitudes. The *Stenocarpus Cunninghami*, a proteaceous tree, displays, when in full bloom, one gorgeous mass of bright crimson stamens, tipped with orange. The silky oak (*Grevillea robusta*) has a downy foliage, nearly hidden by its flowers, resembling branched combs of crooked golden wire; and amongst the noble pines is seen the "bunya-bunya." In the warm, sheltered waters animal life abounds—that strange marine animal, the dugong, the bêche-de-mer—so dear to Celestial epicures—and the pearl oyster, which is to toilers of the sea what the coveted nugget is to the digger on land. Farther northwards the coast-line is very beautiful, and lovely islets stud the sunny waters.



VIEW OF LOUHITT BAY, FROM MOUNT ST. GEORGE.

(From a Photograph by J. W. Lindl.)

picturesque coast range, and dotted over with white villas, half-concealed in groves of palms and orange-trees. From Rockingham Bay the coast-line is equally beautiful, and the smooth waters are studded with verdant islets. Mourilyan Harbour is one of the most picturesque in the world, with a purely tropical forest sloping to the water's edge. There is, indeed, no more delightful trip in the world than a yachting voyage in the summer seas of northern Queensland.

STEPHEN THOMPSON.

