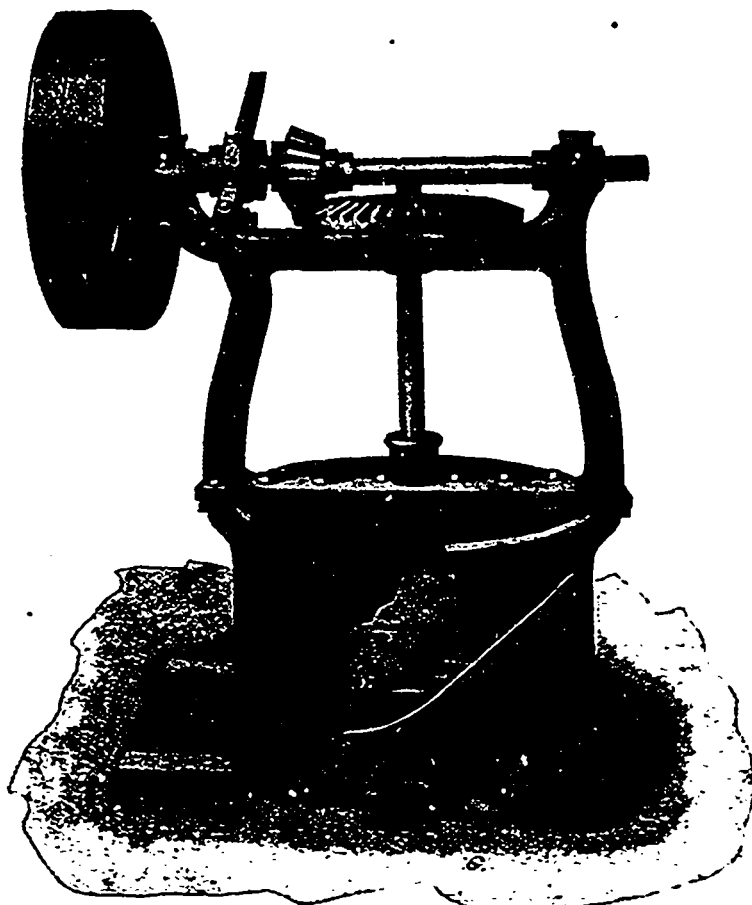


Grinding,
Mixing
and
Blending
Machinery
for
Liquids, Paste,
Paints,
Dry Colors
Roots,
Barks,
Crystals,
Powders,
and
any
Grindable
Material



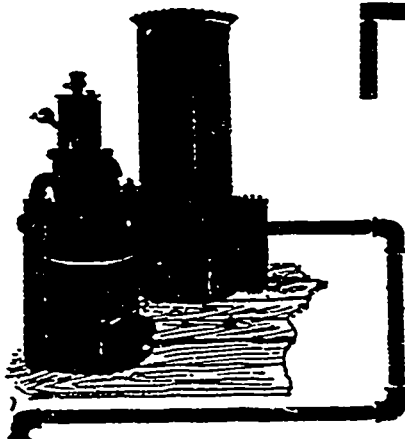
White Lead and Heavy Paste Paint Mixer.

**Wm. and
J. G. Greey**

2 CHURCH STREET,
TORONTO

Manufacturers

Flour,
Oatmeal,
Cereal Machinery,
Paint and Ink
Machinery
Grain Choppers
Grinding, Blending
& Mixing Machinery
Chilled Iron Rolls
and Rolling Mills
Trucks, Power
Transmission and
Elevating Appliances



CHEAPEST POWER PRODUCER GAS

Relative Cost--Gas vs. Steam Power

Ordinary Steam Plant Burns 5 lbs. Coal Per H.P. Hour.

Producer Gas Plant Burns $\frac{1}{5}$ lb. Coal Per H.P. Hour.

100 H.P. STEAM PLANT

$$\frac{100 \times 10 \times 300 \times 5}{2,000} = 750 \text{ Tons}$$

Cost at \$4.00 = \$3,000

The Producer Gas Co.

11 Front St. E., TORONTO.

100 H.P. GAS PLANT

$$\frac{100 \times 10 \times 300 \times \frac{1}{5}}{2,000} = 112 \text{ Tons}$$

Cost at \$5.00 = \$560

SAVING on Fuel
alone, annually) **\$2,440**

Specialists in Large Gas Engines and Plants.

WRITE US.