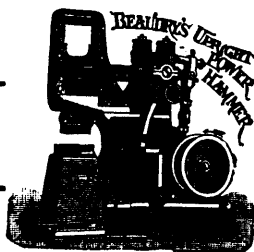


SIMPLE;



PRACTICAL

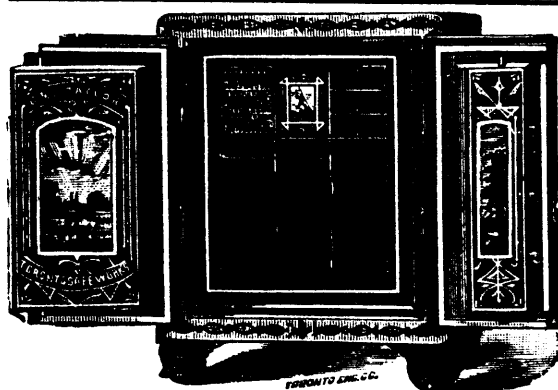


AND BEST.

BEAUDRY UPRIGHT CUSHIONED POWER HAMMER

The most handy, compact, and above all, the most efficient tool ever invented for Manufacturers of all descriptions, Railroad Shops, Steel and Machine Forgers, File and Vice Makers, Knife and Cutlery Makers, Axle, Edge Tool and Agricultural Implement Manufacturers, Carriage Builders and, in fact, all others who need a first-class Hammer, and one of extraordinary capacity and adaptability. Correspondence solicited.

MILLER BROS. & TOMS, SUCCESSORS TO **Miller Bros. & Mitchell,** Sole Makers for **CANADA,** **MONTREAL.**
Toronto Office, 74 York Street.



Double Tongue
and Groove
FIRE-PROOF

J. & J. TAYLOR'S

SAFES

(Patented
January 14th,
1886.)

Established 33 years.

All our new style Fire-proof Safes are fitted with TWO COMPLETE TONGUES AND TWO GROOVES on both the door and door frames, which effectually prevent the heat from passing between the door and frame into the interior of the safe.

They are also fitted with CHILLED CHROME STEEL PLATES under the Lock and Bolt Spindles to prevent drilling; and have DRY AIR-CHAMBER inside to prevent dampness to papers.

Catalogues and Prices on application.

J. & J. TAYLOR, Toronto Safe Works

INTERCOLONIAL RAILWAY OF CANADA.

The direct route between the West and all points on the Lower St. Lawrence and Baie des Chaleur, Province of Quebec; also for New Brunswick, Nova Scotia, Prince Edward, and Cape Breton Islands, Newfoundland and St. Pierre.

Express trains leave Montreal and Halifax daily (Sunday excepted) and run through without change between these points in 28 hours and 55 min.

The through express train cars of the Intercolonial Railway are brilliantly lighted by electricity and heated by steam from the locomotive, thus greatly increasing the comfort and safety of travelers.

New and elegant Buffet sleeping and day cars are run on all through express trains.

Canadian-European Mail and Passenger Route.

Passengers for Great Britain or the Continent, leaving Montreal on Friday morning, will join outward Mail Steamer at Halifax on Saturday.

The attention of shippers is directed to the superior facilities offered by this route for the transport of flour and general merchandise intended for the Eastern Provinces and Newfoundland; also for shipments of grain and produce intended for the European market.

TICKETS may be obtained, and all information about the Route; also FREIGHT and PASSENGER RATES, on application to

D. POTTINGER,

Chief Superintendent.

RAILWAY OFFICE, MONCTON, N.B., March 16, 1891.

N. WEATHERSTON,

Western Freight and Passenger Agent, 93 Rossin House Block,
York Street, TORONTO.

IMPROVED WOOL WASHER

BUILT BY

C.G. Sargent's Sons

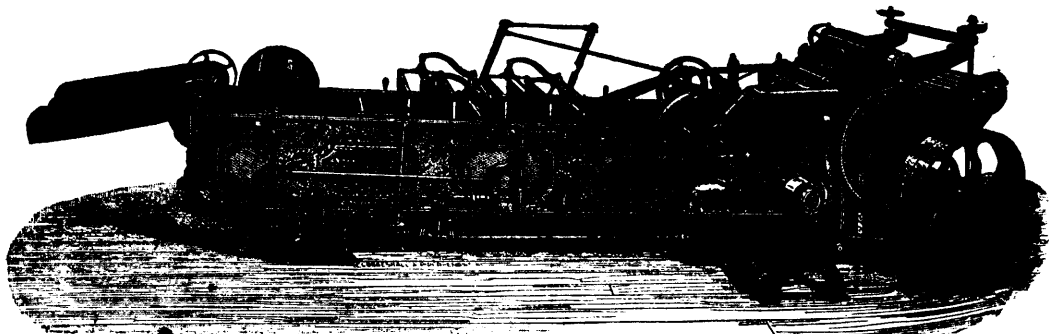
Graniteville, Mass.,

U.S.A.

Builders of Wool Washers,

Burr Pickers, Wool

Dryers, etc.



The above represents our New Hydraulic Wool Washer, superior to Rake Machine. Send for Illustrated Catalogue.