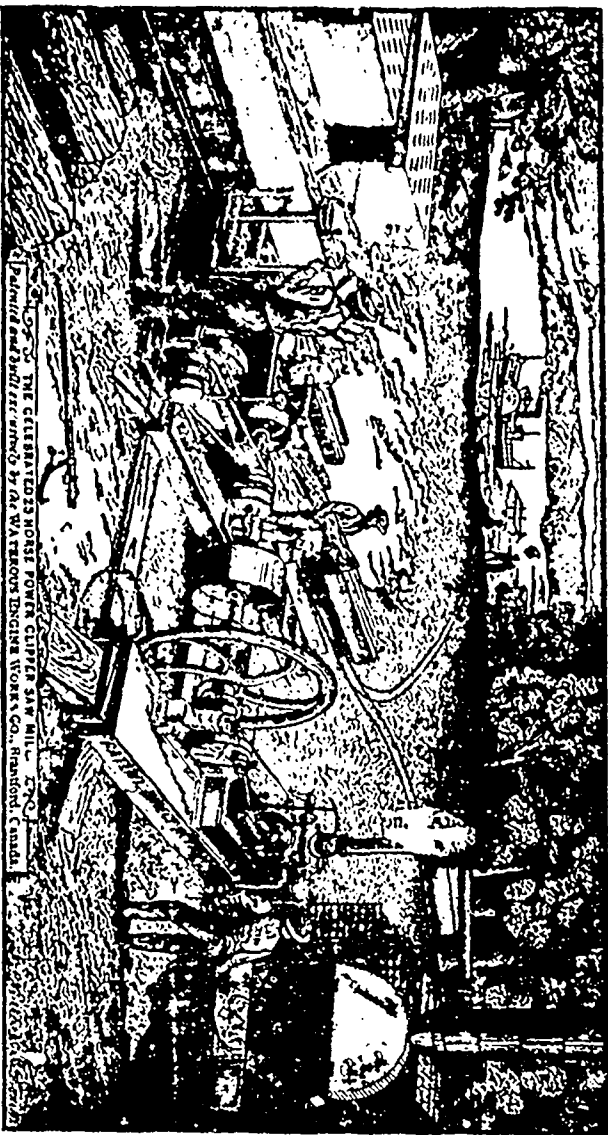


Semi-Portable and Portable Direct Action and Belted Saw Mills

TEN DIFFERENT SIZES.

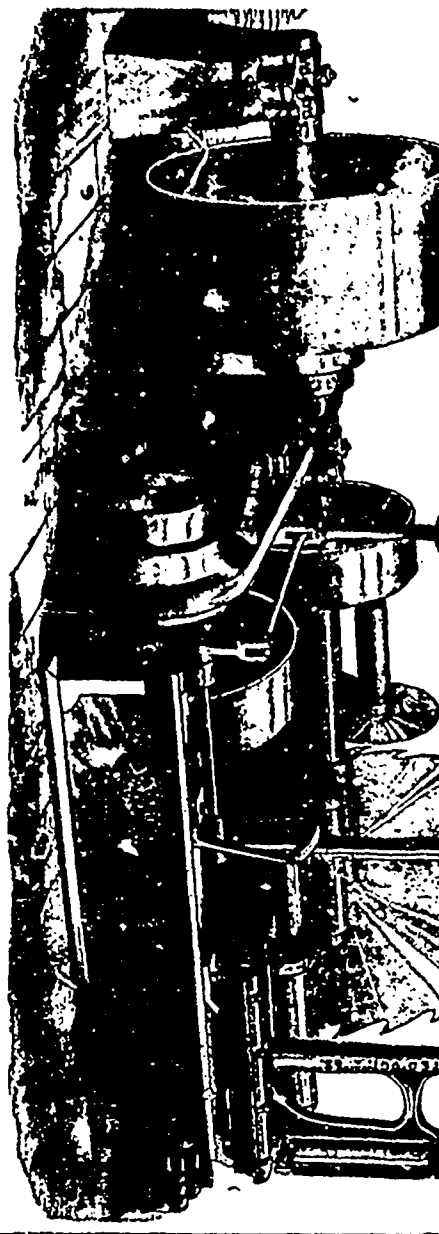


THE CELEBRATED PORTABLE POWER DRIVEN SAW MILL. PATENTED AND REGISTERED BY WATKINS ENGINE WORKS CO., BRANTFORD, CANADA.

Above cut represents our 25 H. P. Patent Direct Action Mill which we guarantee to cut 8,000 to 12,000 feet of lumber per day of ten hours, and to be the most efficient, economical and durable mill built in America, and will saw lumber cheaper per thousand than heavy large size belted or gang mills. For over a quarter of a century the leading pioneer mill of Canadian millers. Especially constructed for hard work.

IMPROVED SAW FRAME

Using 4 to 12 inch Face Pitches: Steel Mandrels; Reservoir (oil Boxes); Double Leather Feed Belts, from 2 1/2 to 6 inches wide, takes 72 inch Saw and under. **GABRIAGGS** to cut any length desired for slabbing or stock purposes, ship yards, etc.; Ratchet or Trolley's Friction Set Works, Eagle Claw Dogs, Tiger Dogs, Reversing Attachment, and special features.

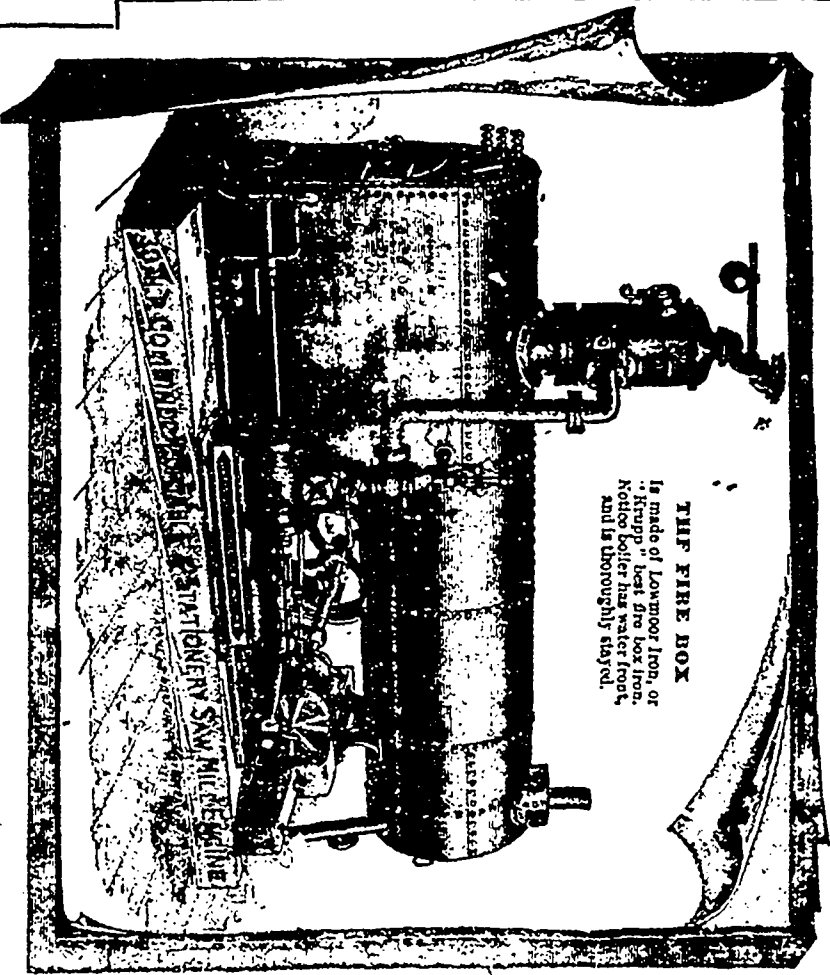


Automatic Log Rollers, 2, 3 and 4 saws; Automatic Lumber Trimmers, 5 to 9 saws each; Log Turners, Slash Tables, Log Jacks or Haul-up of all Capacities, Endless and Single Chain; Automatic Log Rollers, Transfers, Live Rolls, Shingle Machines, Drag Saws, Knee Bolters or Block Splitters, Shingle Packers, Gang Lath Mills, Stave Machines, Automatic Sawdust Feeders for Gangs of Boilers, Sawdust, Slab and Refuse Conveyors, Elevators, Pickering Governors, Worthington and Blake Steam Pumps, American Planing and Matching Machines, American Saws, Solid and Inserted Tooth, Extra Thin Circular Board Saws a specialty, Swages, Gummers, Emery Wheels, and all kinds of Saw Mill Furnishings kept in stock.

WATKINS ENGINE WORKS CO., Brantford, Canada.

Send for New Price List and Illustrated Circular, of special interest to saw-mill men. Mention this Paper.

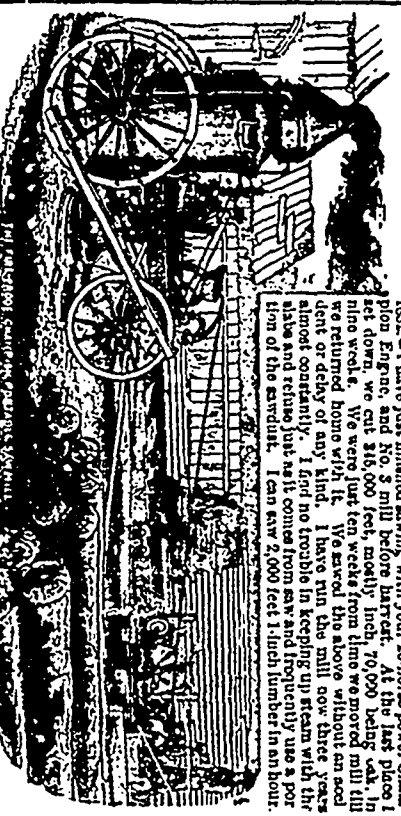
This Cut represents the Engine furnished with Nos. 8, 12, 16 and 18 Saw Mills.



THE FIRE BOX
Is made of Lowmoor Iron, or "Krupp" best fire box iron. Boiler boiler has water front, and is thoroughly stayed.

Champion Portable Saw Mills

12, 16, and 20 H. P.



Greatest Book writes as follows:—"St. Ann's, Oct. 7, July 31st, 1892. I have just finished sawing with your 20-horse power Champion Engine, and No. 3 mill before harvest. At the last place I set down, we cut 315,000 feet, mostly 12-inch, 70,000 being cut in nine weeks. We were just ten weeks from time we moved mill till we returned home with it. We sawed the above without an accident or delay of any kind. I have run the mill now three years almost constantly. I find no trouble in keeping up steam with the above and refilling just as it comes from saw and frequently use a portion of the product. I can saw 2,000 feet 12-inch lumber in an hour."

The following are a few who have bought these mills:—

- Canada Pacific R. R. Co.
- G. B. Hall & Co., Que. (2)
- Dominion Land & Co. (2)
- Shorthrope, Que. (2)
- Sorel R. R. Co., Que. (2)
- Yochimac Rancho Co., N. W. T.
- Dow It., N. W. T.
- Nov. West Milling and Mining Co., N. W. T.
- Dow It., N. W. T.
- Toronto and Nov. West Colonization Co. Near Brant.
- Morton Dairy & Farming Co., Turtle Mountain.
- Allan Grant Ottawa.
- Geo. Parley, Ottawa.
- Michigan Native Copper Co.
- W. W. Stewart, Montreal

A. & P. White, Pembroke, have one of these 30 H. P. mills at Deux Rivieres, C. P. R. R. G. C. V. Hall, Quebec, has one of these 30 H. P. mills at St. Agnes, Quebec. Also, W. & F. Wallace, Gardner's Creek, N.B., with 60 foot Ship Yard Carriage.