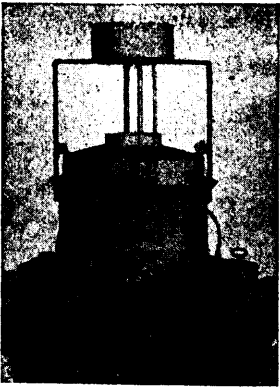


# The HAMILTON ACETYLENE GAS MACHINE



SIMPLE, ECONOMICAL, DURABLE AND SAFE.

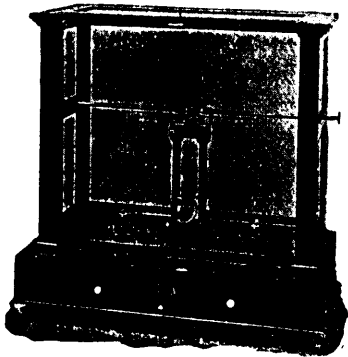
Acetylene Gas is the coming light. It is much superior to coal gas, electricity or coal oil and is much cheaper than any other artificial illuminant known. Specially adapted for hotels, stores and public buildings.

MANUFACTURED BY

**The Hamilton Acetylene Gas Machine Co., Ltd.,**

**Sidney Shore, 134 & 136 GOVERNMENT ST, VICTORIA.**

General Agent for B.C.



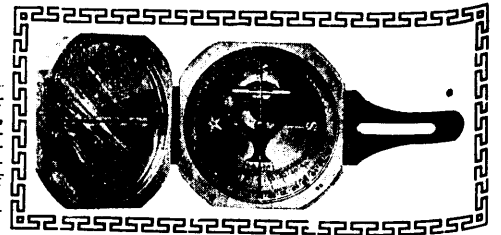
## The Brunton Patent Pocket Mine ....Transit....

Ainsworth, No. 043, Button  
Balance. Sensibility,  
1-100 Milligramme.

This is a double column 10-in.  
beam button balance of the  
most approved design and  
better than any balance on  
the market for the price  
asked. Send for photos of  
his and other balances to.

This is a convenient and ac-  
curate pocket instrument for  
the use of Mine Engineers,  
Managers and Foremen, be-  
ing, especially designed for  
preliminary work under  
ground and the taking of  
rough topography above.  
Send for descriptive circular  
to.....

The Brunton Patent Pocket Mine  
Transit.



Manufacturer of

Fine Button Balances  
for Assayers.

**WM. AINSWORTH,**

2151 Lawrence Street,

**DENVER, Colo.**

Ainsworth No. 043.  
**MacFARLANE & Co., Agents, Vancouver, B.C.**

Cable address :

"Cortez," Vancouver.

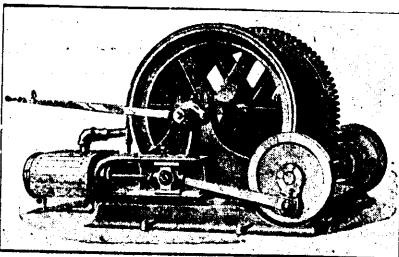
Codes : Brownhall's.  
Moreing & Neill.

# J. M. Mackinnon, MINES, REAL ESTATE,

ONLY FIRST-CLASS PROPERTIES HANDLED  
MINES BOUGHT AND SOLD

For authentic and thorough information, call or address :

**J. M. MACKINNON, Mackinnon Building, Granville Street, VANCOUVER, B.C.**



## Hoisting AND Winding Engines Mining, Milling and Concentrating MACHINERY

Thoroughly Modern in Type; Substantially Constructed, and Convenient and Efficient in Operation.

Contracts for Complete Steam and Water Power Plants  
a Specialty. General Mill and Mine Supplies.

**F. R. Mendelhall,**

....Agent,  
**ROSSLAND, B.C.**

**The JENCKES MACHINE CO.**

32-40 Lansdowne Street,  
**SHERBROOKE, QUE.**

ESTIMATES SUBMITTED PROMPTLY.  
Catalogues and Prices on Application.