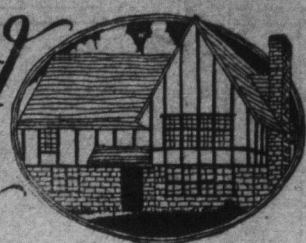




# HOME BUILDER and FURNISHER



ISSUED WEEKLY

## MASON CONTRACTOR

I will estimate upon all kinds of new work and repair jobs  
ALL WORK GUARANTEED

**ARTHUR PLUMMER**

(LATE PLUMMER & BROWN)  
Phone 918 31 Brubacher Street, Berlin

## THE FIRM WHO DARES

to take your work  
and guarantee the work when done  
is the firm with which to  
place your orders.

SEE

**J. Hainsworth**

Sanitary and Heating Contractors

14 N. FOUNDRY ST. PHONE 516.

## Mason Work

and GENERAL CONTRACTING

We shall be pleased to estimate on your work

**Henry Brown**

135 Samuel St. Phone 1195

## ARCHITECT

Head Office: King St., Waterloo  
**Ornan G. Scheifele**  
Branches: Preston, Gu Iph and Stratford

Having devoted six years of my time to the study of Architectural work in all its branches I am sure that it will pay you to call at my office, which is always open until ten o'clock at night.  
I am making the design of Bungalows my special work, and all work is inspected and done on commission basis in the same manner as in the larger cities.  
Phone 55 Waterloo and arrange your appointment.

## MASON CONTRACTING Large or Small Jobs FIGURES PREPARED

If you are thinking of building, consult us  
**WUNDER BROS.** 30 Peter St. Phone 659

We Have a Number of Very Artistic

## Cement Flower Vases

\$5, \$6, \$7, \$8, \$9, \$10,  
AND UP  
AT BELOW REGULAR PRICES

They are on view outside of our works and you can make your selection from a large assortment of models.

**CASPER BRAUN**

Marble Works and Contractor  
149 W. King St. Phone 507

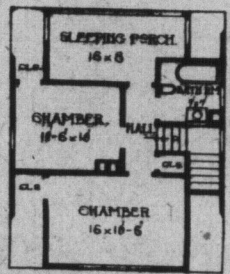
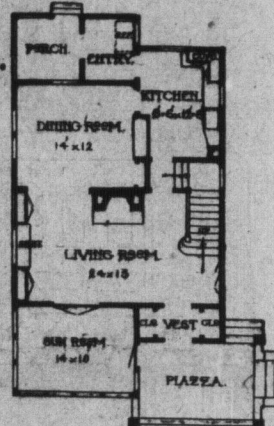


A PICTURESQUE COTTAGE  
Designed by Chas. S. Sedgwick, Architect.

The cottage shown in our illustration is 25 ft. in width by 44 ft. in depth, including the sun room in front and the rear porch. It is designed to have a full basement with concrete foundation and to be frame construction, cemented on the outside up to the first story window sills and above this point the exterior shingled with alternate wide and narrow courses of shingles and the roof shingled. A suggestion for exterior treatment is to stain all of the shingles green, using a dark shade of green on the wall shingles and a lighter shade of green on all roof shingles and painting all the outside trimmings, cornices, casings, etc., white, also the window sash. The interior is finished with oak floor in the first story and birch floor in the second, natural birch casings throughout the first story, doors, etc., and white enamel finish in the second story. The arrangement of the plan is very convenient and has many pleasing features. It is well suited to the ordinary city lot with either south or east frontage.

The vestibule entrance is at the right side, through a liberal sized porch and opens into the main living room 24 ft. by 13 ft. This living room connects by French glazed windows in the front to the sun room 14 ft. by 10 ft. This sun room is inclosed with glazed windows and is finished the same as the living

room. There is one central chimney with a wide fireplace in the living room and providing a flue for the heating apparatus in the basement. The kitchen also has a separate chimney. It is estimated to build this cottage, exclusive of heating and plumbing, for \$2,000 to \$2,700. The dining room has a recessed sideboard and china closet, and connects with the living room by wide cased opening, and connects conveniently with the kitchen in the rear. The kitchen is well provided with wall cupboards, sink, etc., and opens out into a rear entry with space for refrigerator and thence onto the rear porch. The second story has two good chambers with large sized closets, a good bath room and a fine sleeping porch in the rear. The shape of the roof admits of these rooms being full height with square angles.



## Workingmen Rally To Manufactories

Munition Recruiting Bureaus Opened in Great Britain  
LONDON, June 24.—The enrolment of war munitions volunteers is engaging more attention for the time being than the enlistment of recruits for the army. It is a striking proof of how David Lloyd George Minister of Munitions, has succeeded in awakening the country to the paramount necessity of concentrating on the production of shells and other war materials.

At six o'clock this evening munitions work bureaus were opened in nearly two hundred town halls in various parts of the country, of which fifty-three are in London alone, and in a large number of other buildings, to give British workmen an opportunity "to get into the factory line and supply the firing line." According to a page advertisement in big type, printed in all the important newspapers, these bureaus were opened in the evening in order that the men might enlist for munition work without losing time in their present situations.  
Will be Little Delay  
"Every skilled worker, who is ready to go, will be put into his new job with the least possible delay," said H. E. Morgan, a well-known business man, whom Mr. Lloyd George has impressed to help mobilize the new army of skilled workmen. "There will be no long period of awaiting. The need is too urgent. The loyalty of the British workman is such, we know, that he is prepared to make sacrifices to help his pals on the firing line."

## BY THE SEASHORE

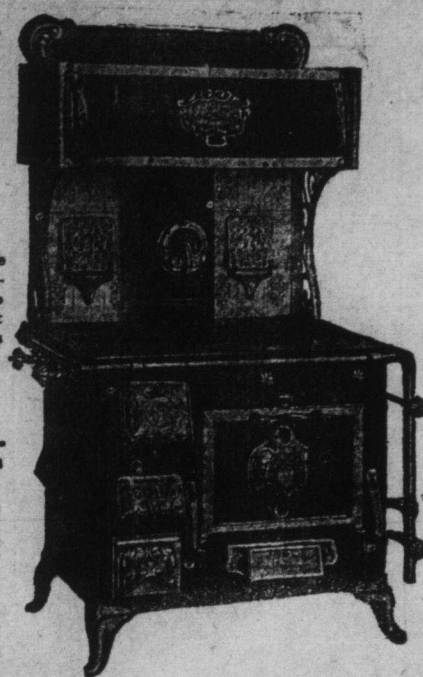
A holiday by the seashore is the form of vacation most appreciated by thousands of people from the inland centres. Portland and its environs abound with attractions to suit all tastes, from the quiet retirement of Cape Elizabeth and Cushing Island to Old Orchard and Yarmouth, popular chiefly for their beaches and surf bathing. "Mountains of New England and the Sea," issued by the Grand Trunk Railway System contains full information, complete list of hotels and boarding houses, etc., and may be had on application to C. E. HORNING, D.P.A., Toronto, Ont.

The trip of Liberty Bell, from Philadelphia to San Francisco, will be filmed en route for moving picture exhibitions.

**Make a note TO USE OUR Classified Column**  
when you have any thing you want to sell or wish to buy

## McClary's "Champion" 2 in 1 Range

Take a look at the accompanying illustration, then come to the store and have it explained. It burns COAL WOOD AND GAS. It's the most economical range made in Canada.



**Wolfhard & Co.**  
West King St. Berlin Phone 24.

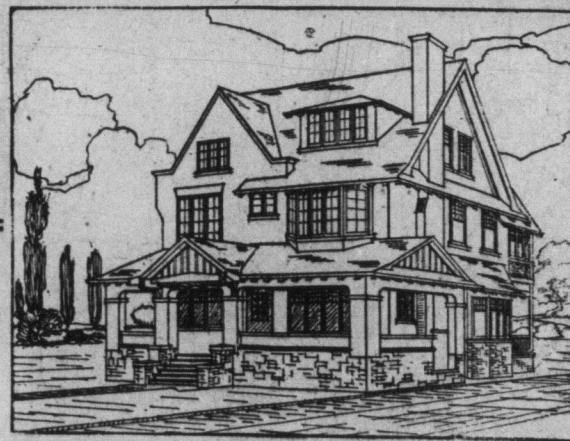


## MELROSE PARK

LOOK HERE

Build Your House in Melrose Park  
Away from smoke and noise, with Street Car Service and all latest conveniences close at hand, fifteen minutes' walk from King Street. It's a healthy locality to live in and it is also an excellent place to BUILD TO SELL.

I would exchange some of these valuable Lots on Residences or other good property.  
**S. A. BRUBACHER, Prop.**



THE interior of this modern architectural home consists of a spacious living room with handsome fireplace, large hall giving convenient access to parlor, diningroom and kitchen. The five bedrooms are well lighted and airy of which two have private sewingrooms. The carefully studied layout gives special comfort and attractiveness.

The building of exceptionally modern and convenient homes is our specialty.

PLANS, SKETCHES and ESTIMATES GIVEN FREE

## Reitzel Brothers

Architects, Contractors and Manufacturers of Building Supplies

FACTORY---Allen Street, Waterloo.  
OFFICES---42 King Street East, Berlin - Phone 387  
Allen Street, Waterloo - Phone 236

## Build This Year

Berlin offers the Investor one of the Best Fields for Profitable Returns  
YOU CAN BUILD CHEAPER NOW

## Read Our Classified Ads