

DESCRIPTIONS OF FIGURES IN COLORS, TINTS, ETC., SHOWN ON FIRST PAGE OF COVER AND PAGES 277 TO 300 INCLUSIVE.

FIGURE ON FIRST COVER PAGE.

This figure is No. 127 R and is fully described on page 303. In that and the present instance the development is the same. Appliqués of velvet cut in a floral design, the interstices being filled in with lace stitches done in heavy silk floss, effectively adorn the toilette which is made of heliotrope cloth. Two ruffles of yellow chiffon edged with narrow frills of white chiffon are softly cascaded down the front of the waist and add a dainty touch of harmonizing color.

FIGURES NOS. 122 R AND 123 R.—STREET TOILETTES FOR EARLY SPRING.

(For Illustrations see Page 277.)

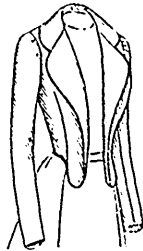
FIGURE No. 122 R.—This includes a Ladies' jacket and skirt. The pattern, which is No. 3777 and costs 10d. or 20 cents, is in nine sizes for ladies from thirty to forty-six inches, bust measure, and is again depicted on page 306. The skirt pattern, which is No. 3758 and costs 1s. or 25 cents, is in nine sizes from twenty to thirty-six inches, waist measure, and may be once more seen on page 319.

The exquisite cut of the grayish-blue cloth jacket makes it very attractive. It is modelled to define the figure, and the fronts are snugly adjusted by double bust-darts. The fronts are deepened to form a point at the center, and at the top are turned back in lapels by the stylish rolling collar of velvet. The jacket closes at the front in single-breasted fashion with buttons and button-holes, and all its free edges are neatly stitched. The well-cut sleeves are of the two-seam variety.

Strappings and buttons finish in a decorative manner the

novel skirt, which is here made of gray cloth. The skirt has a circular upper part lengthened by a circular flounce and is characterized by a box plaited gore at the back. The mode is closed at the left side in front under the overlapping edge, which is in saw-tooth outline.

The entire toilette may be reproduced in homespun or cheviot, with braid in graduated widths for ornamentation.



3831



3831

FIGURE No. 123 R.—This embraces a Ladies' jacket and skirt. The jacket pattern, which is No. 3776 and costs 10d. or 20 cents, is in nine sizes for ladies from thirty to forty-six inches, bust measure, and is also shown on page 306. The skirt pattern, which is No. 3748 and costs 10d. or 20 cents, is in nine sizes from twenty to thirty-six inches, waist measure, and is differently pictured on page 323.

The skirt forming part of this toilette is cut on unique lines. It is a four-gored mode that is adjusted in sheath stylo at the front and sides, but has a double box-plait at the back. At the lower part of each side-front seam is formed an under box-plait, the impression of a slashed skirt being thus given below the knee. The skirt is here shown made of mixed brown cheviot and is embellished with an embroidered design done in brown silk.

The close-fitting Eton jacket is slightly double-breasted, and the fronts are deepened at the center to form a point.

A velvet rolling collar reverses the fronts in lapels, and the sleeves are in two-seam style. Dark-brown cloth was selected for the jacket, which is finished with stitching.

Such a toilette may be developed in cloth, serge or zibeline and finished with self-strappings or stitched bands of taffeta.



3831

Front View.



3831

Back View.

LADIES' TWO-PIECE COSTUME: CONSISTING OF AN ETON JACKET TO BE MADE WITH OR WITHOUT THE VEST AND WITH A WHOLE OR SEAMED BACK, AND A FOUR-GORED SKIRT TO BE IN DIP OR ROUND LENGTH AND HAVING A BOX-PLAIT AT THE BACK.

(For Description see Pages 311.)