

Tons of garbage could supply heat

Hamilton plant beats waste into submission

By KEITH NICKSON

In a natural science lecture last Friday, Hamilton consulting engineer Gordon Sutin described the operations of the world's first SWARU—the Solid Waste Reduction Unit of Hamilton—and revealed that "the A was added simply to make it a pronounceable word."

The SWARU, which Sutin designed in 1968, converts 600 tons of solid waste a day into granular ash, which is presently being used for landfill but may also be used to make asphalt. Sutin views garbage as another natural resource that we are failing to exploit properly.

"One ton of garbage is equal to half a ton of coal, as far as heating value is concerned," he commented afterwards.

To describe the SWARU process, Sutin employed a detailed slide presentation along with his own commentary. Initially, garbage trucks dump their separate loads into one huge pit. From here, conveyor belts carry it to the 'pulverizer'.

JUNK IRON

Once the garbage is sufficiently crushed, it flows onto another conveyor belt that exposes it to a series of magnets. These remove ferrous metals, which are subsequently sold to junk iron dealers, they in turn sell the metals to STELCO and other such companies for re-use in the steel making process.

After encountering the magnets, the refuse enters a storage tank where it remains for 24 hours. The

primary part of the process has taken 16 hours.

NO MATTRESSES

Sutin mentioned that one thing the plant cannot recycle is bed mattresses; they must be picked out by 'specialists' prior to the start of the procedure.

"I don't know why," he commented, "but it seems to me that Hamilton people wear out mattresses far quicker than most Canadians."

The second half of the process involves dropping the waste into a boiler, where non-combustibles are sorted out and disposed of into huge stacks.

Much of the garbage burns, however, and the resulting gases (CO₂, O₂ and Nitrogen) are emitted into the air in almost the exact proportions in which they are found there naturally. Fly-ash that appears after the burning is funnelled off and

mixed with the non-combustibles. This constitutes the granular ash that is the final product of the SWARU.

When asked about costs, Sutin replied, "It cost \$8½ million to build the unit and it costs \$8.50 a ton to

make the granular ash."

Inevitably, he was questioned on the possibility of Toronto building a SWARU, and quickly responded by saying that "they have been enquiring but are pursuing their own investigations."

Cash settlement of millions for James Bay Indian claimants

MONTREAL (CUP) — The James Bay Cree have agreed to an out-of-court settlement amounting to \$150 million following their protests against the billion-dollar James Bay power project.

The native peoples will receive \$75 million cash over the first 10 years and an additional \$75 million in royalties from hydro revenues over a longer period. This will all be tax free.

The agreement calls for a guaranteed annual income for those who still hunt, trap and fish for a living. Two thousand square miles of the James Bay watershed will become reserves for the Cree people, who will have exclusive hunting, fishing and trapping rights over a 25,000 square mile area.

In return for the settlement, the Indians have dropped their court proceedings against the development project.

The Quebec government will pay for the bulk of the settlement, with the federal government kicking in about \$30 million.

The president of the Native Indian Brotherhood, George Manuel, expressed some misgivings about the issue, saying, "We want something more substantial than just money; we want a better social deal for the natives of Canada."

He mentioned shortcomings in housing, education, health and job opportunities that face all native people in Canada.

A sublime plot

NEW YORK (CUP/ZNS) — The United Nations has warned that "subliminal messages" from satellites may be a future form of international "brainwashing."

Subliminal messages are pictures and sounds flashed so quickly they cannot be consciously detected; however they are picked up by the subconscious and can reportedly influence later behaviour.

The U.N. is worried one nation might plot to influence another by broadcasting subliminals during regular satellite transmissions of international events.

Messages like "long live Chairman Mao", for instance, could be sent disguised as an innocent sportscast.

A U.N. task force has recommended that the practice be outlawed.

change of course?

We've got a program for you that could change the course of your whole future — successfully.

It's called our Sales & Marketing Management Program, and it's for graduates who want the most out of their career and have the drive to earn it.

To find out more fill in the coupon below or talk to your Campus Recruitment Officer about an interview.



The Canada Life Assurance Company

The Canada Life Assurance Company
330 University Avenue, Toronto, Ontario M5G 1R8

Send me more information about your Sales & Marketing Management Program.

NAME _____

ADDRESS _____

COURSE _____
(Include resume if available.)

INFLATION... WHY?

Are Workers The Cause Or The Victims?

Socialist Labor Party PUBLIC MEETING

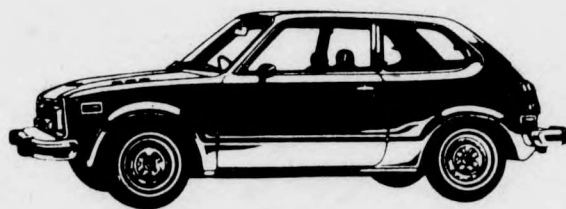
King Edward Hotel — Windsor Room

Sunday, December 8 at 2 pm.

STEREO SALE
UP TO 40% OFF PRE-CHRISTMAS SALE ON COMPONENTS & T.V.'s

We Carry: Altec Lansing, Kenwood, Dual, Sansui, Dynaco, Toshiba, RSC, Norelco, JVC Sherwood, KLH, Shure, Avid, Transcriptor, Electrohome, Rotel, Garrard, Watts, Zenith, Telefunken, etc.

TAVAT STEREO
1393 LAWRENCE AVE. W. (AT KEELE)
free parking 241-7380 or 241-8235



HONDA

The most extraordinary combination of comfort and performance only comes with the new Honda Civic from \$2 799. 1240 c.c. Overhead Cam Engine giving 38 M.P.G. Regular Gas.

Test Drive Today!

Small Car Center Ltd.

Service for All Makes of Small Cars

1½ Miles North of Richmond Hill on the East Side of Yonge St.

Watch for the Sign



884-9274

773-4542

Students' rites.



BLACK & WHITE

BY APPOINTMENT TO HER MAJESTY THE QUEEN
SCOTCH WHISKY DISTILLERS
JAMES BUCHANAN & CO. LTD. LONDON

SPECIAL BLEND OF BUCHANAN'S
CHOICE OLD SCOTCH WHISKY
DISTILLED, BLENDED AND BOTTLED IN SCOTLAND

VIEUX SCOTCH WHISKY SELECTIONNE
DISTILLÉ, MÉLANGÉ ET EMBOUTEILLÉ EN ÉCOSSE

James Buchanan & Co.
DISTILLERS
GLASGOW & LONDON.
40% alc./vol.

Black & White.
Enjoyed in over 168 countries.