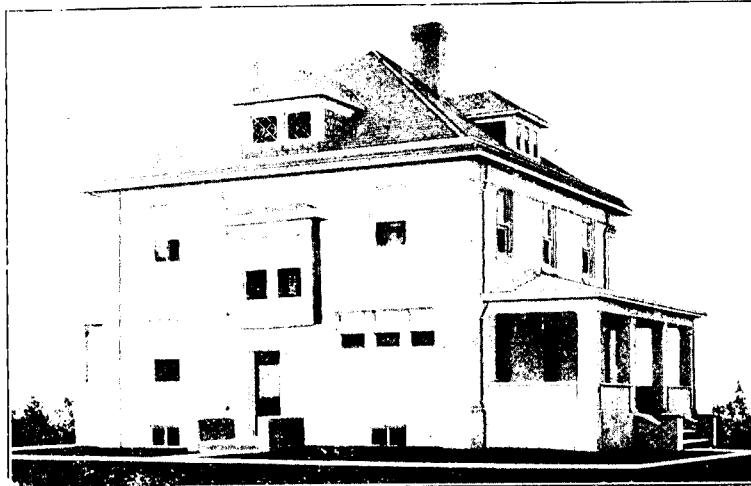


Residence  
constructed of  
IDEAL Concrete  
Blocks  
with stucco finish  
Fire-proof  
throughout



Owner,  
Frank Powers,  
Westbury,  
Long Island, N.Y.

Architect,  
I. B. Baylis,  
Hempstead, N.Y.

## Fire-Proof Stucco Construction With "IDEAL" Blocks

Perfect stucco building construction is only possible by the use of IDEAL Concrete Building Blocks.

The usual interior, or *real* structure over which the stucco is applied, is of wood - flimsy, inflammable, perishable, and comparatively expensive. IDEAL Concrete Blocks provide a base for stucco work that is low in cost, as substantial and durable as if hewn from stone, and best of all, is absolutely fire-proof, and practically cold-proof.

Special face plates can be provided for the IDEAL Machine for making blocks specially for stucco work. These blocks may be made of very coarse materials, and produced at surprisingly little cost. Furthermore, these special blocks save the expense of metal, or other lathing as a base for stucco.

## IDEAL

Face-Down Interchangeable

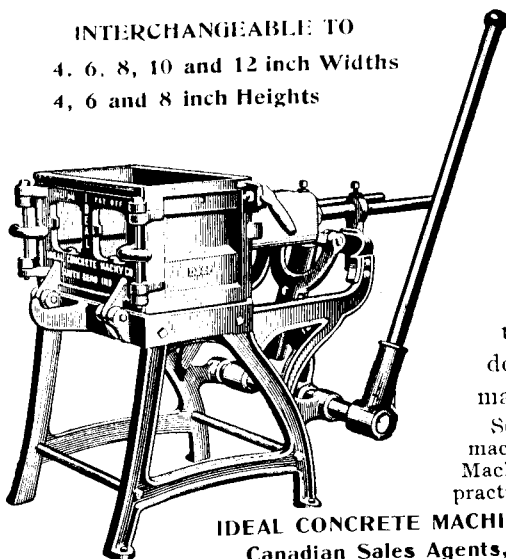
## Concrete Machines

### TWO SIZES :

Model "A" 16 inch Length  
Model "E" 24 inch Length

### INTERCHANGEABLE TO

4, 6, 8, 10 and 12 inch Widths  
4, 6 and 8 inch Heights



also produce blocks in many different styles of ornamental face design, and in varying forms of natural stone effect. By the use of different face plates in combination, the most pleasing architectural effects can be secured.

The "IDEAL" machine is interchangeable to produce blocks of any angle, varying widths and any length within capacity. It is simple, rapid and economical in operation. Absolutely unbreakable in use. It is the only machine legally built on the face-down principle, permitting the use of a rich facing material with coarser material at back of block.

Send for free catalogue showing complete line of concrete machinery, including Mixers, Brick Machines, Sill and Lintel Machines, Spindle, Ball, Sidewalk, Step and Sill Molds, etc. A practical encyclopedia of the concrete industry.

IDEAL CONCRETE MACHINERY CO., Ltd., Factory, 221 King St., London, Ontario, Canada  
Canadian Sales Agents, MUSSENS LIMITED, Montreal, Toronto, Winnipeg, Vancouver