

**FIRE PROOF ROOFING**  
 STEEL IRON  
 WRITE FOR CATALOGUE  
 PEDLAR METAL ROOFING CO. OSHAWA ONT.

**The Pulsometer**  
 STEAM PUMP

OFTEN IMITATED BUT NEVER EQUALLED

•••  
 The simplest, simplest and most efficient steam pump for general Milling, Quarries and Contractors purposes.

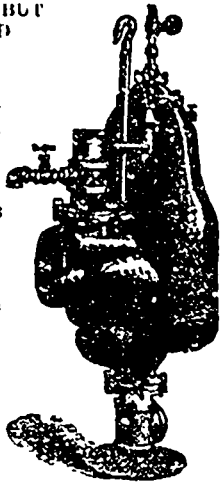
•••  
 Muddy or Critty Liquids Handled without wear.

•••  
 Descriptive Catalogue with prices, furnished on application.

•••  
**PULSOMETER**  
 Steam Pump Co.  
 NEW YORK

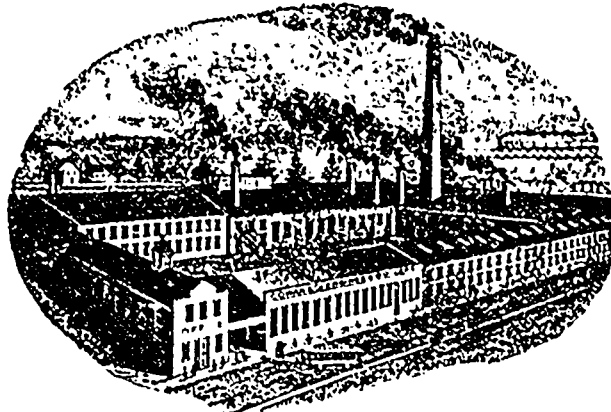
**A. R. Williams Machinery Co.**

Toronto and Montreal,  
 Selling Agent for Canada.



**COWAN & CO., GALT, ONTARIO**  
 Manufacturers of  
**Woodworking Machinery**

••  
 Corliss and  
 Slide Valve  
 ENGINES.  
 BOILERS.



••  
**MOFFAT'S**  
 Patent  
 Heaters.  
 Saw Mills.

••  
 Old Wood Tools, Engines and Boilers, taken as part pay on now. We have on hand a number of . . . .

Rebuilt Wood Tools which we offer at low prices and most favorable terms. . . .  
 Engines and Boilers  
 WRITE FOR Terms, Prices and Catalogue.



HAMILTON, CAN.

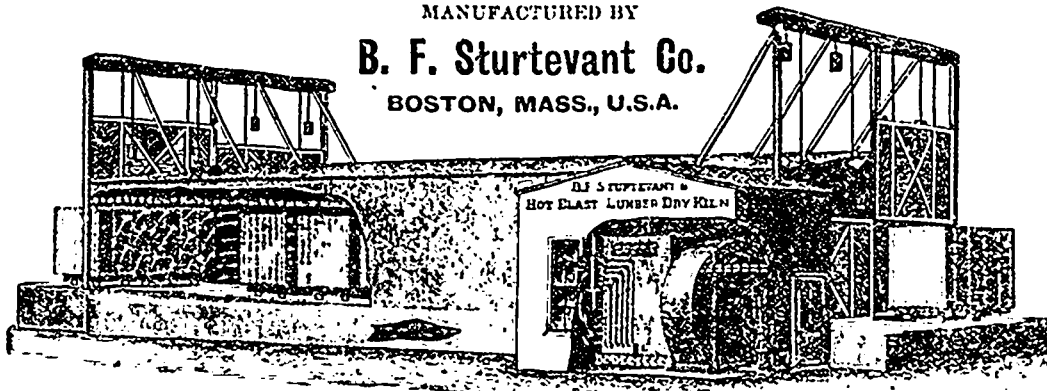
Catalogue on Application.

**The Sturtevant Progressive Lumber Dry Kiln**

Complete .  
 Plans . .  
 Furnished .  
 With . .  
 Each . .  
 Apparatus.

MANUFACTURED BY

**B. F. Sturtevant Co.**  
 BOSTON, MASS., U.S.A.



Absolutely  
 Safe . .  
 AS A  
**FIRE**  
**RISK**

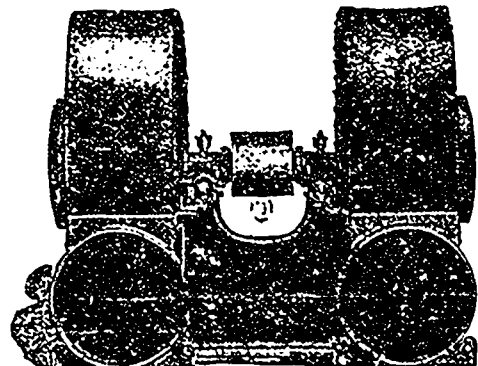
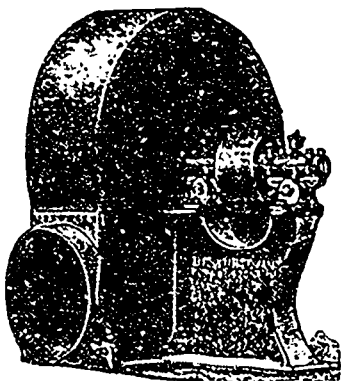
QUICK DRYING  
 Economical in use of steam.

**THE STURTEVANT**  
**Steel Plate Exhaust Fans**

For Removing Refuse from Wood-working Machinery  
 SEND FOR CATALOGUES

**A. R. WILLIAMS MACHINERY CO.**

GENERAL CANADIAN AGENTS  
 TORONTO, BRANTFORD, MONTREAL



DOUBLE EXHAUSTER