

AN "ALLEN" RECORD THIS CAN'T BE BEAT

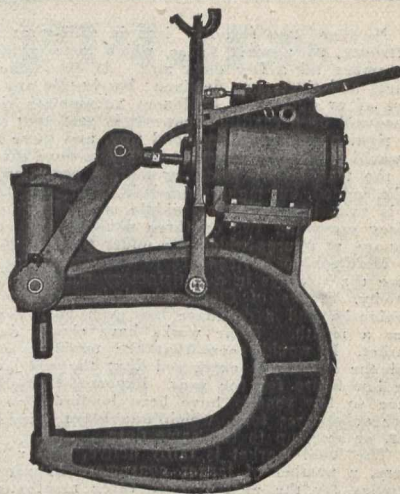
"We have in use one of your Jaw Riveters, 25 in. reach, bought from you in 1901, which has worked almost continuously, and we may say has never given us the slightest trouble, and cost practically nothing for repairs."

WM. P. McNEIL & CO.
New Glasgow, N.S.

Agents:
Canadian Rand Drill Co.
Toronto, Halifax, Montreal

JOHN F. ALLEN, 370 Gerard Avenue,
NEW YORK, U.S.A.

Established 172



(Continued from Page 44).

P. F. McCaffrey. Dawson & Company, \$75,000; J. A. Dawson, G. G. Buch, J. N. Brissette. Desmarais & Robitaille, \$190,000; E. Desmarais, L. A. Robitaille, A. Lanctot. Lake Lamothe Company, \$20,000; A. Lamothe, St. Denis; E. A. Lamothe, L. Guertin, Montreal. Club Liberal, St. Louis, \$10,000; A. P. Pigeon, J. Monette, E. Bolt.

ACCIDENTS ON CANADIAN RAILWAYS.

Sixty-four passengers were killed on Canadian railways and 326 injured during the year, as compared with 42 killed and 210 injured in 1907. During the same period 246 employees were killed and 866 injured, as against 212 killed and 317 injured in 1907. Including people killed on the tracks and in other ways the total number of killed was 529, and injured 1,309, as against 460 killed and 603 injured during the present fiscal year.

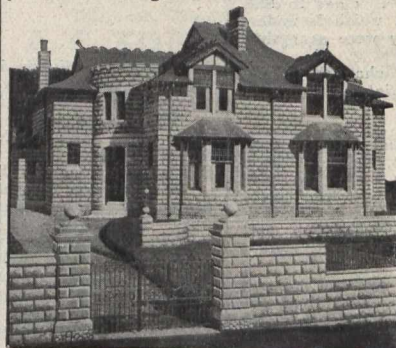
On the C.P.R. 283 people were killed and 314 injured, as against 218 killed and 140 injured in 1907.

On the Grand Trunk 165 were killed and 721 injured, as against 160 killed and 303 injured in 1907.

On the Canadian Northern the killed numbered 19 and the injured 123, as compared with 30 killed and 92 injured in 1907.

On the Michigan Central 25 were killed and 72 injured, as against 29 killed and 12 injured in 1907.

Double House Villa at Paisley, Scotland. All blocks in building and surrounding wall the product of a single "IDEAL" machine.



Better Than Natural Stone

With all their advantages over natural stone as a building material, IDEAL Concrete Building Blocks may be profitably manufactured and sold *anywhere* at prices even lower than brick or lumber.

In England and Scotland where architectural beauty and everlasting durability are prime requirements, IDEAL Concrete Machines are rapidly taking the place of other sources of building material supply. Some of the advantages of

IDEAL Face-Down Interchangeable Concrete Machines

Greater range of artistic possibility. The same machine reduces endless varieties of face designs.

Greater resistance to heat and cold. Fire-proof under all conditions. Hollow blocks give practically frost-proof construction.

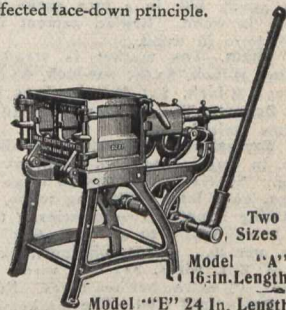
Lower in cost: "IDEAL" Blocks in any design produced for a fraction of the cost of stone.

The Ideal Concrete Machine is the *only* machine legally built on the perfected face-down principle, allowing the use of rich facing material with coarser mixture for back of block. Interchangeable features found in "IDEAL" alone more than double its range of use and profit, often saving the purchase of several special machines. The "IDEAL" is simple, rapid and durable and its cost of operation is lower than that of any other machine.

See our exhibit at the Convention of the National Association of Cement Users, Central Armory, Cleveland, Ohio, Jan. 11-16, 1909. Of value to every Architect, Contractor, Builder and Dealer. Display of Ideal Interchangeable Block Machines and full line of concrete machinery. Our new development of concrete blocks will astonish the building world. Well worth coming expressly to see.

IDEAL CONCRETE MACHINERY CO., LIMITED
215 King St., London, Ontario, Canada

Canadian Sales Agents: MUSSENS, Limited, Montreal,
Toronto, Winnipeg, Vancouver



VULCAN PORTLAND CEMENT

WILLIAM G. HARTRANFT CEMENT CO., LIMITED
Sole Selling Agents, MONTREAL

MICHIGAN WHITE CEDAR

Best to Last. 150,000 Poles in Stock

100,000 Ties at our Sorting Yards

We have been in the Cedar Pole and Tie Business 28 years. 50,000 Trolley Ties at Bay City Yard

W. C. STERLING & SON CO., — MONROE, MICH.

Yards: BAY CITY, OMER, BOYNE FALLS, CASS CITY and MONROE

"SAMSON" Canada's Best

THE OWEN SOUND PORTLAND CEMENT CO.,
LIMITED

WRITE FOR PAMPHLET

"CEMENT, HOW TO USE IT, HOW TO BUY IT."

General Sales & Head Office, Owen Sound, Ont.