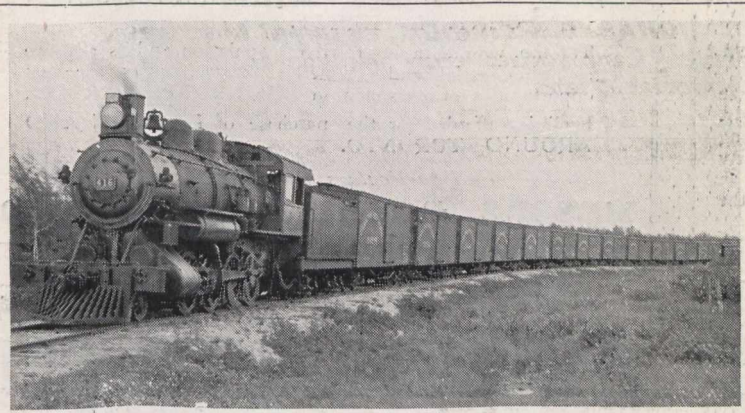


# CANADIAN NORTHERN



CANADIAN NORTHERN FREIGHT TRAIN.

## Opening of Lines IN Eastern Canada

**NEW ROUTE  
LOWEST RATES  
QUICK SERVICE**

Shipments accepted at Quebec and Montreal from all Ocean Steamship Lines for important points in Quebec and Ontario, viz.:

<b>Montreal, Ottawa,</b>	<b>Brockville, Kingston,</b>	<b>Belleville, Trenton,</b>	<b>Colborne, Oshawa,</b>	<b>Toronto, Sudbury,</b>	<b>Port Arthur, &amp;c., &amp;c.</b>
------------------------------	----------------------------------	---------------------------------	------------------------------	------------------------------	--

### LINES IN WESTERN CANADA.

Fast Freight Service from Montreal via All-Water, Lake and Rail, or All-Rail Route to

<b>Brandon, Calgary,</b>	<b>Edmonton, Portage la Prairie,</b>	<b>Prince Albert, Regina,</b>	<b>Saskatoon, Winnipeg, &amp;c., &amp;c.</b>
------------------------------	--	-----------------------------------	--

Connections with all Steamship Lines from Great Britain and the Continent. Steamship or through Canadian Northern Railway Bills of Lading issued to all points.

From **BRISTOL to QUEBEC and MONTREAL** { **R.M.S. ROYAL GEORGE, July 15, August 12**  
**R.M.S. ROYAL EDWARD, July 29, August 26**

Copies of any of the following booklets—dealing with Atlantic Travel, Sporting Territories, Holiday Resorts and Emigration—will be sent free to inquirers:—  
 “Map of the C.N.R.”; “First Class Handbook”; “Passengers’ Handy Guide”; “What You Gain”; “A Bunch of Letters from Canada”; “Muskoka Lakes District”; “Where to Fish”; “Niagara, St. Catharines and Toronto Line”; “Rainy Lake District” (the new playground); “Summer Resorts”; “Peace River Country”; “35,000 Free Homesteads”; “Canada for British Women”; “Hall Kinsman!”

Freight and Passenger Rates, and any further information required, will be gladly given upon application to Canadian Northern Railway Offices—

**LONDON**—European Traffic Manager, 27, Leadenhall Street, E.C.; Passenger Department, 21, Charing Cross, S.W.; Emigration Department, 21, Charing Cross, S.W.

**BIRMINGHAM**—141, Corporation Street.  
**BRISTOL**—65, Baldwin Street.  
**CARDIFF**—18a, High Street.  
**GLASGOW**—125, Hope Street.  
**LIVERPOOL**—C 4 & 5, Exchange Buildings

**PLYMOUTH**—71, Old Town Street.  
**PARIS**—Thos. Cook & Son, 1, Place de l’Opera.  
**HEAD OFFICE**—Bond Court House, Walbrook, London, E.C.

## J. & G. ROSS

32, Old Bond Street, London, and Exeter.



The Wide World Famous  
**“ROSCUT”  
 COAT.**

Pure Wool. Smoke Tan  
 Waterproof. Suitable for  
 either Town or Country.

Gentlemen’s “Roscut”  
 from  
**55/- (\$13.40)**

Ladies’ “Roscut”  
 from  
**50/- (\$12.20)**

The Celebrated  
**“EXMOOR”**  
 side or cross saddle  
**HUNTING SKIRT,**  
 from 50/- (\$12.20)

**TWEED & HOMESPUN COUNTRY & SPORTING SUITS.**

**TAILORS’ GOWNS FOR DRESS MATINEES  
 and AFTERNOON VISITING FOR LADIES.**

Telephone—1312 Mayfair.

Telegrams—Roscutor, London.

## BUTLER’S FAMOUS SHEFFIELD CUTLERY & PLATE



BUTLER’S  
 Famous  
 “Cavendish”  
 Carver

—TRADE MARKS GRANTED—  
**“BUTLER”**  
 A.D. 1821  
 Highest Awards

**ART**  
 A.D. 1861  
 Special Mention

**George Butler & Co. Ltd. SHEFFIELD, ENGLAND  
 and 62 HOLBORN VIADUCT, LONDON, E.C.**