

McCormick—The Binder of Satisfactory Service

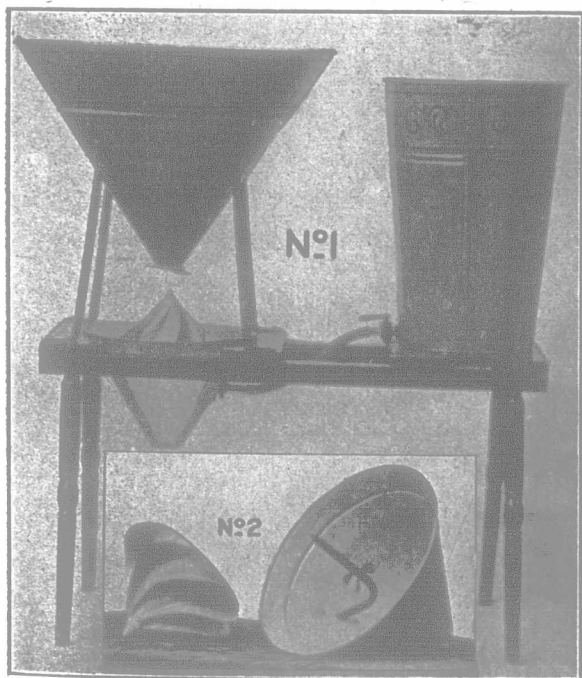
FOR more than seventy years McCormick binders have been giving such satisfactory service that sales have steadily increased in every part of the world. The secret of satisfactory binder service in Eastern Canada lies in the special features with which all McCormick binders sold in the Eastern Provinces are equipped. The McCormick binder is built to last and has every necessary adjustment to keep it working up to full capacity. On a McCormick binder the reel has a wide range of adjustments and handles successfully, tall, short, down or tangled grain. A third packet assists in handling grain that is full of undergrowth or that is very short. The bottoms of the guards are nearly level with the bottom of the platform, allowing the platform to be tilted to cut close to the ground without pushing trash ahead of the knives. The floating elevator handles grain in any quantity and does not clog. The cutter bar is built to use either smooth section or serrated knives. The improved McCormick knotter does good work without the usual close adjustments. The I H C. local agent will explain these and other important features on the McCormick binders which are built especially to meet Eastern Canadian conditions. You can get catalogues from him, or, by writing the nearest branch house.

EASTERN CANADIAN BRANCHES
International Harvester Company of America
 (Incorporated)
 At Hamilton, Ont.; London, Ont.; Montreal, P. Q.;
 Ottawa, Ont.; St. John, N. B.; Quebec, P. Q.
 These machines are built at Hamilton, Ont.



AUTOMATIC SEED GRAIN PICKLER

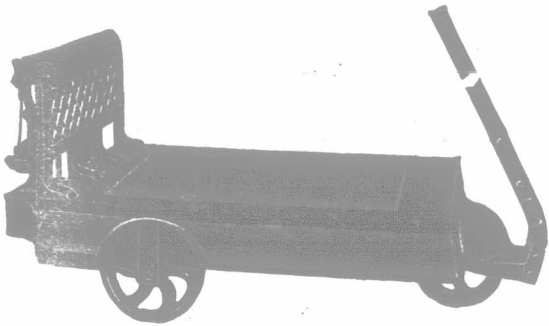
For the Prevention of Smut Germs, etc.



(Patented Jan. 17th, 1911)
 The fastest and most economical Grain Pickler on the market. This Seed Grain Pickler is a self-operating machine, supplying its own power by the force of the grain as it leaves the hopper, falling on the turbine situated in the lower hopper, causing a quick revolution of the turbine.
 Cut No. 1 is the complete machine. Cut No. 2 is the turbine and sprayer and lower hopper. The pipe, which is shown in the center of the hopper in cut No. 2, delivers the liquid to the interior of the turbine, and it is then forced by gravity to pass through openings in the bottom outer edge, spraying the grain.
 Full capacity: Wheat, 135 bushels per hour; peas, 115 bushels per hour; barley, 100 bushels per hour; oats, 90 bushels per hour, and other grain accordingly, but can be regulated to lessen the capacity as required. The machine can also be used for mixing grain.
 We guarantee this machine to give perfect satisfaction or money refunded. Prices on application.
 Directions for using.—Use 16 ozs. of liquid formaldehyde to 36 gals. of water, and thoroughly moisten the grain with the solution. Oats, barley and millet will require more water than wheat or peas. The best method is to apply it at night. Throw the grain in a heap, cover with a blanket, and bag in the morning. This method gives the gas a chance to penetrate the grain. Manufactured by

THE DOMINION SPECIALTY WORKS, STRATFORD, ONTARIO
 D. A. McCLOY, Manager. Residence, 15 Douglas St. Works, 35 Douglas St.

WAGON AND STOCK SCALE, a Money-saver to you, Mr. Farmer



So often you lose money because you are not quite sure of the weight of the article that is changing hands, and by just putting it on the scales your eyes are opened, and you are in a position to judge very accurately as to what this or that particular thing is worth. Write to-day for our illustrated catalogue, telling you about the Three-wheeled Wagon and Stock Scale. Capacity, 2,000 lbs. All material and workmanship first-class and guaranteed. Address:
The Ayler Pump & Scale Co., Limited
 AYLER, ONTARIO

Reap The Benefits of Available Plant Food



In a favorable season crops will make enormous gains if they are given the available plant food necessary to support them. No soil contains enough available plant food for a bumper crop, or enough to prevent an unprofitable crop in a bad season. A good fertilizer increases the yield and the profit, but the plant food should be in forms available to the growing needs of the crop.

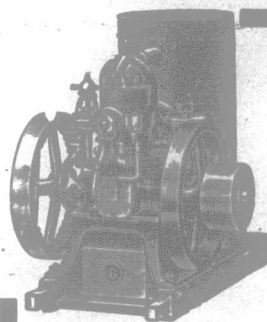
The A. A. C. Co.'s Fertilizers are manufactured from the best materials, and special factory treatment makes them highly available.

Wherever you live, we can reach you with the right fertilizer, the right service and the right price. Write today for a copy of "Plant Food," a practical hand book on fertility. No advertising in it; sent without cost, while this edition lasts.

Agents wanted in unoccupied territory. Liberal terms and goods that sell. It pays to sell our fertilizers as well as use them. Ask for agency proposition.

The American Agricultural Chemical Co.

Makers of brands with fifty years of quality and results behind them.
 P.O. Drawer 814, E. Detroit, Mich.
 71 Lyman Street, Buffalo, N. Y.



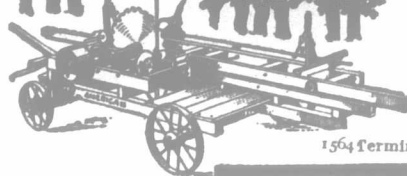
This Engine Runs on Coal Oil

Every farmer can afford an Ellis Coal Oil Engine. They give far more power from coal oil than other engines do from gasoline. They are safe, as well as cheap; no danger of explosion or fire. The strongest and simplest farm engine made; only three moving parts: nothing to get out of repair. Anyone can run it without experience. Thousands of satisfied customers use these engines to grind feed, fill silos, saw wood, pump, thresh, run cream separators, and do dozens of other jobs. Cheaper than horses or hired men. Fill up the tanks and start it running, and no further attention is necessary; it will run till you stop it.

FREE TRIAL FOR 30 DAYS. You don't have to take our word for it. We'll send an engine anywhere in Canada on Thirty Days' Free Trial. We furnish full instructions for testing on your work. If it does not suit you send it back at our expense. We pay freight and duty to get it to you and we'll pay to get it back if you don't want it.
Absolutely guaranteed for 10 years. Write for free catalog and opinions of satisfied users. Special offer in new territory.

3 to 15 horse-power We Pay Duty and Freight **Ellis Engine Co., 94 Mullett Street, DETROIT, MICH.**

WHY NOT BE A LUMBERMAN TOO?



You can do a good lumbering business in fall and winter when the farm doesn't need you. You have the team, wagon and engine. Just get an "American" Portable Saw Mill and you're ready to saw lumber and make good money. Begin with your own wood lot, if you have one. Then saw your neighbors' lumber for them. With a mounted "American" Mill you'll cover a lot of country each season, putting in fall and winter on a good paying lumbering business. Our new book No. 32 will start you right. Ask for it, addressing nearest office.
AMERICAN SAW MILL MACHINERY CO.
 Makers of standard saw mills of any size or capacity.
 113 Hope St., Hackettstown, N. J. Chicago
 154 Terminal Building, New York Savannah - New Orleans

MENTION THE FARMER'S ADVOCATE WHEN WRITING ADVERTISERS.