

**BRANTFORD, ONT.**—The Brantford Screw Company will issue new stock and build a large addition to their factory.

**TORONTO JUNCTION, ONT.**—Superintendent Haggas, of the Waterworks Department, has recommended the purchase of a new pump costing \$10,000 and the extension of the intake pipe, at a cost of about \$50,000.

**BELLEVILLE, ONT.**—The Lehigh Portland Cement Co., who have purchased a location near this city, will shortly be incorporated as a joint stock company. They intend to commence the erection of their plant and buildings the beginning of April and to be running by the fall.—It is rumored here that a syndicate are negotiating for the purchase of the rolling mills and that the mills will be reopened in about a month.—The County Council have instructed G. M. Miller, architect, of Toronto, to prepare plans for the House of Refuge to be built by Hastings County; estimated cost, \$30,000.

**MONTREAL, QUE.**—Mark Fisher, Sons & Company are about to erect a fire-proof building on the south west corner of Victoria Square and Craig street.—Interests allied with the American Steel Foundries Company have organized the Dominion Steel Car Company, Limited, for the manufacture of steel cars, and in the spring will commence the erection of a plant at Montreal West.—Ross & Holgate have been engaged by the City Council of St. John, N.B., to furnish an estimate of the cost of an electric plant for lighting the streets and public buildings.—Plans are said to be in course of preparation for a large departmental store to be built on the property at corner of Peel and St. Catharine streets recently purchased by the Robert Simpson Company, of Toronto.

**LONDON, ONT.**—The London Loan Company have made an offer for the Oddfellows' Hall, corner Dundas street and Park avenue, and if secured will remodel the building.—The congregation of Chalmers Presbyterian church are taking steps towards the erection of a

new edifice.—The County Council have decided to construct a 70-foot steel bridge at the foot of the south hill on Bear Creek, also a 40-foot bridge opposite lot 1, concession 7, West Williams, and a 20-foot bridge opposite lot 9 on the same concession.—Manager McGuigan, of the Grand Trunk Railway, has informed Mayor Judd that the company will spend

## WATER WASHED SAND

Is recognized as the standard for all first-class work.  
Architects and Contractors who make it a point to specify Water-Washed Sand are giving the best possible value to their clients.  
We guarantee prompt deliveries.

**SAND & DREDGING, Limited**  
Tel. M. 4507 John Street Dock, TORONTO

## CONSIDER :

for a moment, that roadways are built to be used by the horse.

## THE BITULITHIC PAVEMENT

provides a sure foot-hold for the horse, gives him confidence, he draws a heavier load with less exertion, and consequently is of more value.

**The Warren Bituminous Paving Co., Limited**  
164 Bay Street, TORONTO.

## - CONCRETE PIPE -

Reinforced Concrete, Culvert and Sewer Pipe

Frost-Proof and Practically Indestructible

We have on hand large stocks of well matured Reinforced Concrete Pipe, 6 inch to 36 inch. Railway Engineers and others interested please write us for particulars.

**THE DOMINION CONCRETE CO., LIMITED, KEMPTVILLE, ONT.**

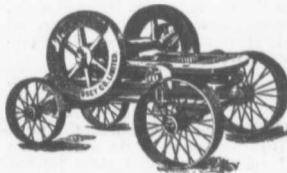
## CRUSHERS

equipped with Dies and Bearings of the best English Manganese Steel.

Latest approved Chain or Belt Elevators, any length.

Revolving and Chute Screens, any Specification.

**SAWYER & MASSEY CO., LTD.**  
Hamilton, Can.



## JOHN GALT

C. E. and M. E.

**CONSULTING ENGINEER**  
and EXPERT

SPECIALTIES:  
**WATERWORKS, SEWERAGE**  
AND ELECTRIC LIGHT

Chief Assistant Engineers:  
O. W. SMITH, C. E. W. J. BOWERS, C. E.  
23 Jordan Street **TORONTO**

## JOHN S. FIELDING

Mem. Soc. C. E. West Penn. '87.

**CONSULTING ENGINEER**

Water Powers Dams, Bridges  
Room 2, 15 Toronto Street, **TORONTO, ONT.**

## DEBENTURES

.. Bought and Sold ..

**G. A. STIMSON & CO.**

15 and 30 King Street West **TORONTO**

## BANCO ZAROSSI

Italian Licensed Labor Contractor

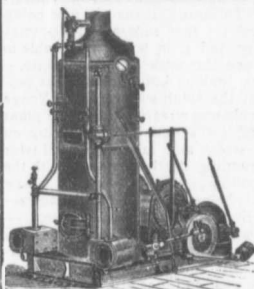
460 St. James St., **MONTREAL**

All kinds of Italian Laborers furnished on short notice.

**M. BEATTY & SONS, Limited**  
WELLAND, ONTARIO, CANADA

**DREDGES, DITCHERS, DERRICKS,**  
**STEAM SHOVELS,**

Submarine Rock Drilling Machinery,  
Mine Hoists, Hoisting Engines,  
Centrifugal Pumps for Water and Sand  
Stone Derricks, Clam Shell Buckets,  
Steel Skips, Coal and Concrete Tubs,  
and other Contractors' Machinery.



Office, 75 Cottingham Street  
Yards 75-81

Long Distance Phone North 1787 and North 1552.

**DISTRIBUTORS**



**VULCANITE**  
**PORTLAND CEMENT**

The Recognized Standard  
for Sidewalks

A strictly High-Grade Portland Cement. Pronounced  
by prominent contractors 'to be the most Uniform  
Portland Cement on the market.

One Quality Only.

Capacity 5,000 bbls. per day.

**The Toronto Pottery Co., Limited, Toronto, Ont.**