

## FRENCH CABINET FALLS AFTER NIGHT SESSION

Sales Tax Clause In Money Bill Is Obstacle

### BRITAIN REACTS

Franc Drops Suddenly On London Market—League Issue Is Confused

By A. L. BRADFORD  
United Press Staff Correspondent  
PARIS, March 6.—The Briand government fell today. Premier Briand resigned, following an all-night session of the Chamber of Deputies, which culminated in defeat for the government on the sales tax clause of the financial project by a vote of 374 to 221. The government had a minority of 53.

The adverse vote ignored Briand's angry warning that catastrophe threatened France if the money bill were delayed. Within an hour the cabinet's resignation had been received and accepted by President Doumergue, and Briand, the "man of Locarno," had announced he would not go to Geneva to help elect Germany to the League of Nations in pursuance to the agreements reached last autumn on Lake Maggiore.

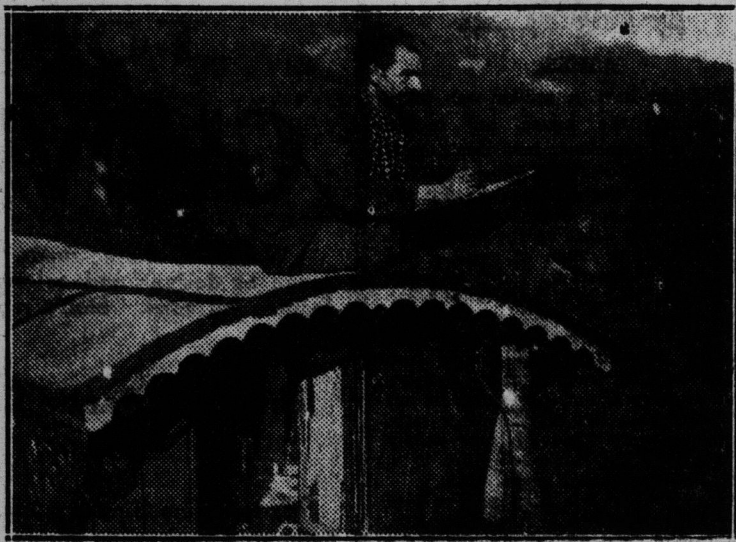
Rescinded by President Doumergue, Briand said he might leave for Geneva tonight, but merely to participate in the preliminary "Locarno-like" conferences scheduled for Sunday the day before the League formally meets.

**BRIAND ANGRY**  
Taunted toward down by the Socialists because he did not make such a clause of the financial project a question of confidence as it came to a vote, Briand angrily warned the Chamber of the catastrophic possibilities of the situation and then conferred with the Finance Minister where it was decided to make the sales tax a question of confidence and put the responsibility on the Chamber.

When the vote was announced shortly after 6 a.m. the deputies who stood with the aged statesman rose crying: "Vive Briand!"

The Premier rose and leading his ministers marched from the Chamber

## AN ARTIST'S CARAVAN



Ethelbert White, a well known landscape artist who tours England with a caravan, together with his wife seeking interesting settings for his pictures. The picture shows him sketching from the top of his caravan.

to an adjoining salon to write his political operation, was defeated when everyone expected him to win.

**NEAR END OF ROPE.**  
France has now about reached the end of her rope. Briand, who was considered to represent the last French hope for solvency without a major reorganization of the powers, Briand told

## A Sure Relief for Women's Disorders



to food in all forms of female troubles, including delayed and painful menstruation, leucorrhoea, falling of the womb, etc. Price \$2 per box, which is sufficient for one month's treatment. Free trial treatment enough for ten days, worth 75c. will be sent free to any suffering woman who will send me her address. Indicate 3 stamps and address Mrs. Lydia W. Ladd, Dept. 20, Windsor, Ont.

**SOLD BY LEADING DRUGGISTS EVERYWHERE**

Much is being said of "health measures"—of the importance of keeping physically fit. Too much cannot be said of "eye care."

Upon keen, efficient vision depends your ability to earn a living—your capacity for pleasure.



**BOYANER BROS.**  
Limited  
Optometrists  
111 Charlotte St.

## "Keen Public Sense" Rewards the Best.

Hence the enormous and ever increasing sale of

**"SALADA"**  
TEA

Brown label 75c lb. Orange Pekoe Blend 85c lb.

Moncton Newsboys

Guests At Y. M. C. A.

MONCTON, March 6.—The newsboys of the city had a wonderful time last evening at the Y. M. C. A. as the guests of the other Y's Men's Club.

The boys enjoyed a dip in the big swimming pool. There was no banquet held, but the club is to entertain the newsboys to supper in the near future, plans for which are now under way.

PARIS, March 6.—The fall of Premier Briand had an immediate effect on the financial market today. The dollar, which closed yesterday at 26.76, opened today at 27.38. It went to 27.89 during the first hour and then reacted to 27.70.

## WIFE IS ASKED TO RECEIVE HER RIVAL

Somerville, Mass. Woman Tells of Husband Bringing Stranger Home

BOSTON, March 6.—Mrs. Joseph B. Walsh, wife of a Somerville postal employee, testified that her husband brought another woman into his home at 1:45 in the morning and called upon her to come out of the bathroom where she had sought refuge and meet the stranger.

Mrs. Walsh is suing the postal attaché for divorce, charging cruelty. She told the Middlesex Probate Court the introduction took place last Thanksgiving.

Despite the fact he also beat her and threatened to kill her, testified Mrs. Walsh, she still loved her husband. She then enumerated numerous acts of alleged cruelty on the part of Walsh, extending from June 4, 1923, when they were married, until a short time ago.

On the occasion of the birth of their child, testified Mrs. Walsh, her husband roundly cursed her for bringing the child into the world. The fact that the present regime is supposed to be Volsteadian made slight difference to the postal employee, according to his wife, who told the court he consumed on the average of a pint and a half of liquor daily.

Further alleged escapades of Walsh were enumerated by Miss Anna Bishop, a Cambridge nurse, who took the witness stand for Mrs. Walsh. Last October, she stated, she paid a visit to the Walsh home, and upon arriving there found Mrs. Walsh to be absent, but her husband home.

On this occasion, she stated, Walsh invited her to go out on a "little tour" with him, and extended her a cordial invitation to come to the house any time his wife was absent.

**Mex. Leader Ready To Lead Revolution**

NEW YORK, March 6.—Adolfo de la Huerta, former provisional president of Mexico, yesterday predicted the imminent downfall of the Calles government in that country, and declared himself ready to lead a revolutionary movement as soon as the Mexican people send for him.

## Saturday Special

Ganong's Reg. 60c.

**Peppermint Chocolates**

For **49c** lb

Fresh—Delicious.

Rowntree's English Cocoa, 43c. lb.  
Vaja Club Coffee ..... 58c. lb.

Our Easter Novelties are here.

**WASSONS**  
2 STORES

PHONE 4181. GOODS SENT

**At CARLETON'S**

WALL PAPER  
For All Rooms From 10c Per Roll Up  
Also odd lots of room lengths with borders to match.  
Priced very low  
245 WATERLOO STREET  
Store Closed 6 P. M., Saturday 10 P. M.

## WALL PAPER SALE

10,000 Rolls New Wall Paper, 9c, 10c, 12c, 15c, 20c, 25c. Other Papers reduced to 8c, 10c, and 15c.  
Borders, 3c, 4c, 5c, 7c, 7c. Odd Borders 3c, 4c, 5c.  
New Gluehans 15c yd. Chambray 20c yd. Curtain Strips 12c yd.  
New Silk Dresses, \$3.50, \$3.75, \$4.25.  
Olive Toilet Soap, 4c, 10c. Bath Soap for 7c. Borax Laundry Soap, large, 6c.  
Linen Writing Tablets, 6c; 25c envelopes, 5c.  
Scrub Brushes 5c. and 10c; Stove Brushes 10c; Glass Tumblers, 5c; Cups and Saucers, 15c.  
Store open Monday, Friday and Saturday evenings.

## ARNOLD'S

157-159 Prince Edward Street 3-8

Corn Flakes (any kind) ..... 12c  
4 pkgs Jelly Powder ..... 25c  
1 lb Sour Krout ..... 25c  
Dill Pickles, per doz ..... 25c  
Best Lemons, per doz ..... 30c  
Chicken Soup, per can ..... 18c  
Campbell's Soup (any kind) ..... 15c  
1 lb Can Best Pink Salmon ..... 20c  
2 Cans Clams ..... 30c  
2 Cans Sardines ..... 25c  
2 Cans Clark's Beans (medium) ..... 25c  
Clark's Beans (large) ..... 25c  
2 Cans Pumpkins ..... 25c  
Choice Corn, per can ..... 10c  
1 lb Blocks Shortening ..... 18c

## MALONE'S DYKEMAN'S

516 Main St. - Phone M. 2913  
239 Charlotte St. Phone M. 5101

## SPECIALS AT

**Robertson's**

98 lb Bag Robin Hood or Cream of West Flour ..... \$4.50  
24 lb Bag ..... \$1.20  
24 lb Bag Pastry Flour ..... \$1.10  
15 lb Lantic Fine Granulated Sugar ..... \$1.00  
100 lb Bag Lantic Sugar ..... \$6.60  
3 lbs Pulverized Sugar ..... 25c  
4 lb Tin Orange Marmalade ..... 47c  
4 lb Tin Pure Plum Jam ..... 48c  
16 oz Jar Orange Marmalade ..... 18c  
3 lb Bottle Pure Strawberry ..... 75c  
5 lb Tin Corn Syrup ..... 39c  
5 lb Tin Pure Lard ..... \$1.10  
5 lb Tin Easyfirst Shortening ..... 80c  
2 Tins Campbell's Tomato Soup ..... 27c  
Orange Pekoe Tea ..... 45c lb  
Good 4 String Broom ..... 35c  
2 qts. Small White Beans for ..... 20c  
1/4 lb Tin Baker's Cocoa ..... 24c  
2 lbs Boneless Codfish ..... 25c  
1/4 lb Cake Baker's Chocolate ..... 22c  
2 Tins Whole Beets ..... 25c  
Heavy Syrup Peaches, Pears and Sliced and Grated Pineapple 23c tin  
2 Corn ..... 25c 2 Peas ..... 29c  
2 Tomatoes ..... 27c 2 Pumpkin ..... 25c  
FREE—1 Cake Sunlight Soap with every purchase of 2 pkgs. Lux for 22c

## STOP AND SHOP

—AT—

## The 2 Barkers' Ltd

100 Princess St. - Phone M. 642  
65 Prince Edward St. - Phone M. 1630  
538 Main St. - Phone M. 4541  
BUY TWO PACKAGES LUX, 22c and RECEIVE ONE CAKE of SUNLIGHT SOAP FREE  
4 lb Tin Pure Fruit Compound Jam 42c  
4 lb Tin Best Pure Strawberry Jam 75c  
4 lb Tin Pure Orange Marmalade 35c  
4 Tins Potted Meat ..... 25c  
5 lb Can Shortening ..... 79c  
3 lb Can Shortening ..... 49c  
2 Cans Corn ..... 24c  
2 Cans Tomatoes ..... 24c  
2 Cans Peas ..... 25c  
10 lbs Choice Onions ..... 23c  
1 lb Pure Cream Tartar ..... 23c  
15 lb Granulated Sugar ..... \$1.00  
24 lb Bag Royal Household Flour \$1.15  
5 lb Bag Royal Household Flour \$1.15  
Extra Fancy Barbados Molasses, 1 gallon at the store for \$1.50 per barrel  
5 lbs Polished Rice for ..... 25c  
2 Cans Pink Salmon for ..... 25c  
3 Bottles Lemon Extract ..... 25c  
Orders delivered in City, West Side, Fairville, Millford and East Saint John

554 Main St. Phone M. 3461  
Cor. Waterloo and Golding Sts.  
Phone M. 3457

## THE THORN-A-GRAM

Publishers, W. H. Thorne & Co., Ltd. SAINT JOHN, N. B. Issued Weekly

## THORNE'S WEEKLY PRICE BULLETIN

New Policy Adopted by Old Established Hardware House

Citizens advised to take advantage of this big new feature and to read this each week.

## Foreword

We are using this extra space once each week to convey to our many customers and to the buying public in general, the information as to prices on our goods, and to show you the different articles of merchandise we have for sale, also to list some of the specials we are having each week in every department.

## HOUSEHOLD DEPT.

**JOHNSON'S FLOOR VARNISH**  
Johnson's Floor Varnish is tough, elastic and durable; it gives a beautiful high gloss that will not chip or mar, great for over linoleum.  
**SPECIAL PRICE**  
**JOHNSON'S FLOOR VARNISH**  
Special Regular  
1 Gal. \$3.90—\$4.33  
1-2 Gal. \$1.98—\$2.20  
1-4 Gal. \$1.05—\$1.17  
1-8 Gal. 54c—60c  
1-16 Gal. 33c—37c  
Family Kalsomine Brush, 6 inch wide, \$1.15  
Impartial Cleaner, 25c. can.  
Old English Wax, 1 lb. Tin 85c; 2 lb. Tin \$1.70.  
Butcher Revolver for floors 1-2 pint, 55c; 1 pint, 85c; quart, \$1.60; 1-2 gal. \$2.75; 1 gal. \$5.10.  
Lemon Oil, 6 oz., 25c; for Polishing Floors, 12 oz., 45c.  
Whiting and Plaster Paris, 4c. per lb.  
Wood Rolling Pins, 30c.  
Wood Ironing Board, \$1.85.  
Wood Mixing Spoons, 15c.  
Wood Knife Boxes, 30 and 40c.  
Wood Pastry Boards, \$1.50.  
Cast Iron Grids, \$1.25.  
Egg Timers, 35c.  
Knife Sharpeners, 75c.  
Toaster, for use on Gas Stoves—80c. each.  
Coco Door Mats:—  
No. 1, size 14in. x 24in. Price \$1.00.  
No. 2, size 16in. x 30in. Price \$1.20.  
No. 3, size 17in. x 30in. Price \$1.70.  
Glass Rolling Pins, \$1.00.  
Egg Slicers, 25c.  
Two Cup Flour Sifter, 15c.  
Nickel Plated Tumbler Holder, 65c.  
Nickel Plated Soap Dish, 45c.  
Nickel Plated Tooth Brush Holder, 45c.  
Nickel Plated Toilet Paper Holder, 45c.

## PAINT DEPT.

**JOHNSON'S FLOOR VARNISH**  
Johnson's Floor Varnish is tough, elastic and durable; it gives a beautiful high gloss that will not chip or mar, great for over linoleum.  
**SPECIAL PRICE**  
**JOHNSON'S FLOOR VARNISH**  
Special Regular  
1 Gal. \$3.90—\$4.33  
1-2 Gal. \$1.98—\$2.20  
1-4 Gal. \$1.05—\$1.17  
1-8 Gal. 54c—60c  
1-16 Gal. 33c—37c  
Family Kalsomine Brush, 6 inch wide, \$1.15  
Impartial Cleaner, 25c. can.  
Old English Wax, 1 lb. Tin 85c; 2 lb. Tin \$1.70.  
Butcher Revolver for floors 1-2 pint, 55c; 1 pint, 85c; quart, \$1.60; 1-2 gal. \$2.75; 1 gal. \$5.10.  
Lemon Oil, 6 oz., 25c; for Polishing Floors, 12 oz., 45c.  
Whiting and Plaster Paris, 4c. per lb.  
Wood Rolling Pins, 30c.  
Wood Ironing Board, \$1.85.  
Wood Mixing Spoons, 15c.  
Wood Knife Boxes, 30 and 40c.  
Wood Pastry Boards, \$1.50.  
Cast Iron Grids, \$1.25.  
Egg Timers, 35c.  
Knife Sharpeners, 75c.  
Toaster, for use on Gas Stoves—80c. each.  
Coco Door Mats:—  
No. 1, size 14in. x 24in. Price \$1.00.  
No. 2, size 16in. x 30in. Price \$1.20.  
No. 3, size 17in. x 30in. Price \$1.70.  
Glass Rolling Pins, \$1.00.  
Egg Slicers, 25c.  
Two Cup Flour Sifter, 15c.  
Nickel Plated Tumbler Holder, 65c.  
Nickel Plated Soap Dish, 45c.  
Nickel Plated Tooth Brush Holder, 45c.  
Nickel Plated Toilet Paper Holder, 45c.

## TOOL DEPT.

**SPECIAL PRICE ON**  
Atlas Scissors as illustrated  
6in. Special price 49c.  
7in. Special price 44c.  
Kitchen Slicers, 70c.  
Paring Knives, 15c. ea.  
Pocket Scissors, good steel, 60c. ea.  
Nail Scissors, good steel, 80c.  
Pocket Knife, 2 blades, English steel. Regular fisherman's knife 50c.  
Ellin's English Stainless Steel Desert Knives, \$5.50 dozen.  
Ellin's English Stainless Steel Table Knives, \$7.50 dozen.  
Sets of Carvers—3 pieces, \$5.75.  
Carpenter's Aprons, 70c and 75c.  
Adjustable Level, No. 9-29in., \$3.  
Bench Axes, \$1.50 to \$3.15.  
Hack Saw Frames, adjustable, \$1.10, \$2.00.  
Hardwood Screw Drivers, 12in., \$1.10.  
Combination Squares, \$2.00.  
Try Squares, No. 20-7 1/2-in., 80c.

## SILVERWARE DEPT.

Silver Plated English Four-Piece Tea Set. Regular \$38.00. Special \$30.00  
Flower Baskets, silver plated, \$7.25, \$8.25, \$10.00, \$12.00.  
Bread Tray, silver plated, \$4.75.  
Butter Dish, silver plated, glass lining, plain rim, with knife, \$1.25.  
Brass Ash Trays, 50c.  
Brass Candle Sticks, \$3.25, \$3.75, \$4.00, \$4.75.  
Brass Tea Pot Stands, \$1.25.  
Brass Toasting Forks, \$1.00.  
Mahogany Candle Sticks, \$3.75.  
Cut Glass Bon Bon Dishes, \$2.25.  
Cut Glass Bowl, \$4.50.  
Cut Glass Candle Sticks, \$2.00.  
Cut Glass Compots, \$2.00.

## CUTLERY DEPT.

**SPECIAL PRICE ON**  
Atlas Scissors as illustrated  
6in. Special price 49c.  
7in. Special price 44c.  
Kitchen Slicers, 70c.  
Paring Knives, 15c. ea.  
Pocket Scissors, good steel, 60c. ea.  
Nail Scissors, good steel, 80c.  
Pocket Knife, 2 blades, English steel. Regular fisherman's knife 50c.  
Ellin's English Stainless Steel Desert Knives, \$5.50 dozen.  
Ellin's English Stainless Steel Table Knives, \$7.50 dozen.  
Sets of Carvers—3 pieces, \$5.75.

## SPORTING DEPT.

**SPECIAL PRICE ON**  
Aluminum Flashlights, complete, No. 2091. Regular 85c—60c. each.  
Aluminum Flashlights, complete, No. 2092. Regular 95c—75c. each.  
Boxing Gloves, No. 9878. Regular \$7.00—\$5.65.  
D. & M. Boxing Gloves, No. 068, \$8.25.  
D. & M. Boxing Gloves, No. 018, \$6.60.  
D. & M. Boxing Gloves, No. 021, \$6.60.  
D. & M. Boxing Gloves, No. 019, \$10.20.  
D. & M. Striking Bags No. 71P, \$8.50.  
D. & M. Striking Bags No. 91P, \$8.50.  
D. & M. Striking Bags No. 87P, \$6.40.  
Indian Clubs, 3-4 lbs, 65c. pair; 1 lb. 75c. pair; 1-2 lb 90c. pair.  
Dumb Bells 3-4 lb. 60c. pair; 1 lb. 85c. pair.

## TOY DEPT.

Wood Horses and Carts—were \$2.50, \$3.00 and \$3.75.  
Special Price \$1.00 and \$1.50.  
Any of the Toys listed below all one price—\$1.00.  
Boats  
Dolls  
Mechanical Toys  
Dolls' Beds  
Games  
Dolls' Trunks  
Toy Furniture  
Pianos  
Animals  
Books  
Paints  
Games  
Dolls' Trunks  
Toy Furniture

## W. H. THORNE & CO., Ltd.

KING STREET and MARKET SQUARE

Store Hours 8.30 to 6. Close Saturday at 1. Phone M. 1920



## See Her Cook Electrically

While downtown to see the new Spring styles, drop in on the Demonstration Monday and Tuesday afternoon at Your Own Hydro.

Watch this miracle Range do really and truly all that is said about it. The speed of its heat, the cleanliness and ease of it. Why, you could run one in your drawing room. The only oven in the world with equalized heat—a guarantee of evenly raised, evenly browned cakes and everything. Never a crack or scorched part, never a "fall"—steady, un-failing, balanced heat that needs no tending. Cooking that keeps fresh twice as long—and meats and vegetables with shrinkage prevented.

Note how you can cook for hours with the current turned off and thus save \$100 a year. Now's your time to judge the most economical and most dependable cooker invented. Come in in the afternoon.

## YOUR OWN HYDRO

CANTERBURY STREET