

WEEK-END VALUES AT SIMPSON'S TO-MORROW

Final Clearance of Sample Dresses

Odds and ends which have been accumulated from different sales, together with about 50 dresses from this one manufacturer's samples. Bright and clean, all fresh, in a wide variety of styles and fabrics, such as serges and silk messalines. The styles are attractively carried out in brown, blue, grey, black, Copenhagen and tan. Usual values \$8.50 to \$12.50. Saturday..... 4.59

\$12.50 TO \$18.50 COATS, \$6.35.
New style, short or long; made of curl cloth of exceptional quality; half lined with silk; kimono or set-in sleeves; colors are green, terra cotta, mahogany, brown, grey and navy. Saturday, each..... 6.35

GIRLS' COATS, \$1.98.
A variety of tweeds and frieze; natty styles. All greatly reduced for Saturday..... 1.98

\$5.00 TO \$9.00 SKIRTS, \$2.98.
The styles are all new; hardly two alike; materials are silk moires, charmeuse, corduroy velvets, Bedford cords, whippords, diagonal serges, fine serges, checks and fancy fabrics; splendid assortment of sizes. Saturday 2.98 (Third Floor)

The Whitewear Sale

A wonderful programme of rush values prepared to ensure quick business at 8.30 Saturday morning.

Women's Nightdresses, fancy pink or blue striped flannellette; tucked yokes; ruffles of goods on neck, front and cuffs; lengths 54, 56, 58 inches. No phone or mail orders. Regularly 50c. Saturday..... .35

Princess Slips, fine nainsook; yoke trimmed with embroidery medallions, Val. lace insertions, and edges, silk draw ribbons; skirt has Val. lace insertions and edges; sizes 34 to 42 bust. Regularly \$1.75. Saturday..... .59

Drawers, fine white cotton; ruffles of wide embroidery, or with Val. lace insertion; lengths 23 to 27 in. Regularly 50c. Saturday..... .35

Corset Covers, fine nainsook; yoke has embroidery and Val. lace insertions; lace beadings and edges; silk draw ribbons; sizes 34 to 42 bust. Regularly 50c and 65c. Saturday..... .35

Nightgowns, heavy fine white cotton; high neck style; cluster tucked yoke, lace edges on neck and sleeves; lengths 56, 58, 60 in. Regularly 90c. Saturday..... .65

Women's Corsets, heavy white cotton; a stylish Royale model; medium low bust; very long hips and back; all rustproof steel filled; four wide side steels; six wide, strong garters; rubber hose buttons; two hooks in front of skirt; bust draw cord; lace trimming; sizes 18 to 26 inches. Regularly \$1.50. Saturday..... .89

WOMEN'S UNDERWEAR, 25c.
Women's Vests or Drawers; heavy white cotton; vests high neck, long sleeves; drawers ankle length; open or closed; sizes 22 to 38 bust. Regularly 35c. Saturday..... .25

Corset Covers, heavy ribbed white cotton; high neck, long sleeves; buttoned front; sizes 32 to 38 bust. Regularly 35c. Saturday..... .25

Women's Sweater Coats, extra heavy pure wool; body woven in one piece; sleeves woven to shape; high or shawl collar; patch pockets; pearl buttons; colors white, grey, navy or cardinal; sizes 32 to 42 bust. Regularly \$4.50. Saturday 3.00 (Third Floor)

Women's Vests or Drawers; heavy white cotton; vests high neck, long sleeves; drawers ankle length; open or closed; sizes 22 to 38 bust. Regularly 35c. Saturday..... .25

Corset Covers, heavy ribbed white cotton; high neck, long sleeves; buttoned front; sizes 32 to 38 bust. Regularly 35c. Saturday..... .25

Women's Sweater Coats, extra heavy pure wool; body woven in one piece; sleeves woven to shape; high or shawl collar; patch pockets; pearl buttons; colors white, grey, navy or cardinal; sizes 32 to 42 bust. Regularly \$4.50. Saturday 3.00 (Third Floor)

Women's Vests or Drawers; heavy white cotton; vests high neck, long sleeves; drawers ankle length; open or closed; sizes 22 to 38 bust. Regularly 35c. Saturday..... .25

Corset Covers, heavy ribbed white cotton; high neck, long sleeves; buttoned front; sizes 32 to 38 bust. Regularly 35c. Saturday..... .25

Women's Sweater Coats, extra heavy pure wool; body woven in one piece; sleeves woven to shape; high or shawl collar; patch pockets; pearl buttons; colors white, grey, navy or cardinal; sizes 32 to 42 bust. Regularly \$4.50. Saturday 3.00 (Third Floor)

Women's Vests or Drawers; heavy white cotton; vests high neck, long sleeves; drawers ankle length; open or closed; sizes 22 to 38 bust. Regularly 35c. Saturday..... .25

Corset Covers, heavy ribbed white cotton; high neck, long sleeves; buttoned front; sizes 32 to 38 bust. Regularly 35c. Saturday..... .25

Women's Sweater Coats, extra heavy pure wool; body woven in one piece; sleeves woven to shape; high or shawl collar; patch pockets; pearl buttons; colors white, grey, navy or cardinal; sizes 32 to 42 bust. Regularly \$4.50. Saturday 3.00 (Third Floor)

Women's Vests or Drawers; heavy white cotton; vests high neck, long sleeves; drawers ankle length; open or closed; sizes 22 to 38 bust. Regularly 35c. Saturday..... .25

Corset Covers, heavy ribbed white cotton; high neck, long sleeves; buttoned front; sizes 32 to 38 bust. Regularly 35c. Saturday..... .25

Women's Sweater Coats, extra heavy pure wool; body woven in one piece; sleeves woven to shape; high or shawl collar; patch pockets; pearl buttons; colors white, grey, navy or cardinal; sizes 32 to 42 bust. Regularly \$4.50. Saturday 3.00 (Third Floor)

Women's Vests or Drawers; heavy white cotton; vests high neck, long sleeves; drawers ankle length; open or closed; sizes 22 to 38 bust. Regularly 35c. Saturday..... .25

Corset Covers, heavy ribbed white cotton; high neck, long sleeves; buttoned front; sizes 32 to 38 bust. Regularly 35c. Saturday..... .25

Women's Sweater Coats, extra heavy pure wool; body woven in one piece; sleeves woven to shape; high or shawl collar; patch pockets; pearl buttons; colors white, grey, navy or cardinal; sizes 32 to 42 bust. Regularly \$4.50. Saturday 3.00 (Third Floor)

Women's Vests or Drawers; heavy white cotton; vests high neck, long sleeves; drawers ankle length; open or closed; sizes 22 to 38 bust. Regularly 35c. Saturday..... .25

Corset Covers, heavy ribbed white cotton; high neck, long sleeves; buttoned front; sizes 32 to 38 bust. Regularly 35c. Saturday..... .25

Women's Sweater Coats, extra heavy pure wool; body woven in one piece; sleeves woven to shape; high or shawl collar; patch pockets; pearl buttons; colors white, grey, navy or cardinal; sizes 32 to 42 bust. Regularly \$4.50. Saturday 3.00 (Third Floor)

Women's Vests or Drawers; heavy white cotton; vests high neck, long sleeves; drawers ankle length; open or closed; sizes 22 to 38 bust. Regularly 35c. Saturday..... .25

Corset Covers, heavy ribbed white cotton; high neck, long sleeves; buttoned front; sizes 32 to 38 bust. Regularly 35c. Saturday..... .25

STORE HOURS: 8.30 A.M. TO 5.30 P.M.

Where Learning Fails

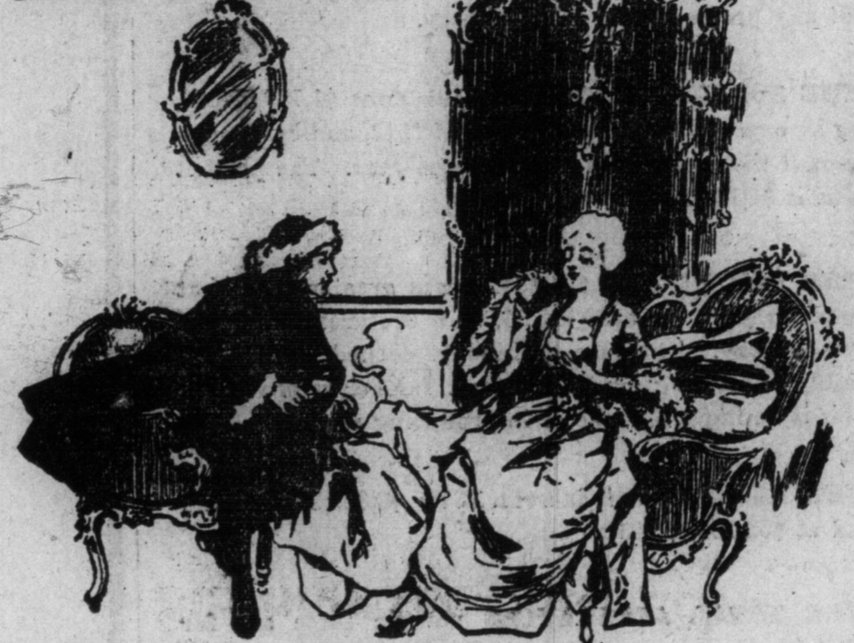
All the schools in the world cannot take the place of good common sense. Columbus, with the keen use of his sight and his seamanship, was more a master than the pick of the universities. We, from our vantage of four centuries of progress, can appreciate the situation portrayed by Dumond in his painting (Paris Salon, 1903).

Columbus at Salamanca

Quite aside from its undoubted merit as an art work, the painting has historical worth. On either basis it is well worth seeing.

Exhibited by courtesy of the Hon. John Wanamaker from his Philadelphia collection.

Fresh Strawberries
Lunch Room, 3 p.m. to 5.30. Fresh Florida Strawberries and Cream with Tain Bread and Butter and Pot of Tea... 15



The New Oriental Silk Crepe d'Chenes in Ivory

27 inches wide; have a rich, crinkly finish; show to good advantage. Quality is worth \$1.00 yard. January Sale price... 68

IVORY JAPANESE HABILIT.
In the soft, natural finish; special value in a good, weighty silk, suitable for slips, linings, underwear, waists and dresses; 36 inches wide. Per yard..... 68

A lighter quality in Ivory Jap, also in natural finish; 1 yard wide. Very good value at..... 53

BLACK DRESS SATINS.
Most reliable, and greatly in demand. Regularly \$1.35, for \$1.18; regularly \$1.65, for \$1.44. (Second Floor)

Advance Showing of Fashionable Dress Fabrics and Suitings for Saturday

Some advance shipments from England and France, including many novelties, as well as a good assortment of staple fabrics.

New Jacquard Effects, in a variety of designs and new colorings, in dress and suiting weights, etc.

Fashionable Crepons and Crepes de Chine, in all-wool and silk and wool mixtures.

Fashionable Silk and Wool Cords de Crepe, in new tones. New Gabardine Suitings, in self colors and two-tone colorings.

Popular Check Fabrics, in dress weights, suiting weights and coating weights.

Fashionable Davetyne Suitings, in plain and brocaded effects, in the newest French tones.

New Velour Fabrics, in medium dress weights and suiting weights, in plain and corded effects.

Also a shipment of high-class Black Dress Fabrics from a noted French maker, including All-wool Crepes de Chine, Silk and Wool Crepes de Chine in plain and brocades, All-wool San Toys, Bengaline Cords, French Armures, Corona Poplins, Silk and Wool Permos, Silk and Wool Cords de Chine, Silk and Wool Eolienne, Silk and Wool Satins de Laine, Silk and Wool San Toys, etc. All guaranteed fabrics, and best French dye and finish.

Dress Goods Department, 2nd Floor.

Furniture at Special Values

Wicker Chairs, made of the strongest reed; have roll arms, high back and deep seat; can be supplied in brown, green or natural finishes. Regularly \$3.10. Special Saturday..... 2.65

English Upholstered Rattan Easy Chair, has deep seat and long sloping back; luxuriously upholstered; neatly tufted, and covered in good quality of tapestry. Regularly \$23.50. Special Saturday..... 17.25

Den Chairs, in solid quarter-cut oak, fumed finish; the seats have loose upholstered cushions, covered in genuine leather. Regularly \$16.00. Special Saturday..... 13.25

Parlor Suite, in mahogany finish, comprised of settee, arm chair and arm rocker; the seats are well upholstered, and covered in fine silk tapestry; have neatly shaped panel backs. Regularly \$32.00. Special Saturday..... 28.50

Parlor Suite, in mahogany finish; set consists of settee, arm chair and arm rocker; the seats are well upholstered, and covered in silk tapestry; have shaped panel backs. Regularly \$30.00. Special Saturday..... 25.00

Parlor Suite, in mahogany finish; set consists of settee, arm chair and arm rocker; the seats and backs are upholstered and covered in high-grade silk tapestry; the backs are neatly tufted. Regularly \$41.00. Special Saturday..... 37.80

Morris Chairs, in solid quarter-cut oak, fumed finish; have smokers' boxes on each side of arm, and well upholstered loose cushions on seat and back, covered in genuine Spanish leather. Regularly \$28.50. Special Saturday..... 24.75 (Fifth Floor)

Big Clearance Men's Ulsters \$10.95

REGULARLY \$15.00, \$18.00 AND \$20.00 VALUES.

English Chinchilla Cloths, in greys, English tweeds in browns and greys, in plain and stripe patterns; beautiful, serviceable cloths; they are made in the season's popular styles; the chinchillas in double ulster style, with shawl collar, and the tweed coatings in double-breasted ulster style, with two-way convertible collar; heavy twill mohair linings, and the best workman- 10.95 ship. Saturday.....

MEN'S PERSIAN LAMB FUR COLLAR COATS.
The material is a splendid quality of English black beaver cloth; cut double-breasted ulster style, 50 inches long, with a notch collar of Persian lamb; the linings are a heavy twill mohair, with interlinings of chammois; finest tailoring. Saturday..... 20.00

MEN'S SHEEP-LINED COATS, \$3.95.
Made from heavy brown duck, with heavy sheepskin linings; storm collar of brown corduroy, patent fasteners, and wind cuffs; strong, well made coats. Saturday at..... 3.95 (Main Floor)

Men's Fur Collars
In astrachan lamb, electric seal, Korean beaver, wollyab and coonskin. Regularly \$3.60 to \$5.00. Saturday for..... 1.50

Men's Persian Lamb Fur Caps, wedge shape, glossy even curl, best finish. Regularly \$8.50 and \$10.50. Saturday..... 5.00

Fur Robes, for auto, sleigh or carriage, in goat skin and Hindoo buffalo, medium size, plush lined. Regularly \$9.50, \$10.50 and \$13.50. Saturday 5.00

Men's Fur Coats, in mountain bear, China dogskin and Korean beaver; choice, heavily furred skins and specially well lined. Saturday Stock-taking Sale price..... 14.95

Men's Fur Coat, No. 1 black Galloway's skins, very close and dense fur, best quilted linings, deep collars and full 50 inches long. Regularly \$35.00. Stocktaking Sale price, Saturday, for..... 24.00 (Main Floor)

All-Wool Blankets
at a Great Reduction
Finest quality, white, all-wool Saxony Blankets, closely woven and evenly napped, thoroughly scoured and cleaned, finished and whipped singly, with pink or blue borders. Weight, lbs., size 68 x 88. Regularly \$17.25 pair. Saturday, pair..... 6.55

ODD BATH TOWELS CLEARING AT 25c EACH.
These include some of our fancy stripes, plain white and brown linen. Large sizes, with good heavy pile. Regularly \$1.00 to \$1.50 pair. Saturday, each..... .48

New Linen Bathing Suitings, in pretty over, ecru and yellow shades, will launder perfectly. Width 27 inches. Sale price, Saturday, yard..... .48

Flannellette, in a good range of neat stripes, heavy quality, 36 inches wide. Sale price, Saturday, yard..... .70

White English Satin, in elegant, good designs. Size 78 x 90 inches. Saturday..... 2.00

MISSIE'S GINGHAM DRESSES, \$1.00.
Misses' or small women's house dresses, of fine gingham, in neat check pattern, blue or grey, fancy roll collar of plain lining, high waist line and cuffs piped plain. Sizes 16, 18 and 20. Saturday..... 1.00 (Third Floor)

Drug Specials
Borax, powdered, 1-lb. carton, 7c; 4-lb. parcel, 25c.
Gillett's Eye, 10c; 3 for 25c.
Dial Eye, per tin, 7c.
Sanitary Bathroom Cleaner, 15c, 25c, 40c and 50c.
Santiflash, for cleaning closet bowls..... 20c
Ammonia, household, pint, 15c; quart, 15c, or 2 for 25c.
Fumigating Pastilles, per box..... 15c
Myco, a deodorizer and perfume, 15c in a box, 10c in packages, a bundle for..... 15c
Eggs, antiseptic and perfume, per box, 10c; 3 for 25c. (Main Floor)

\$4.50 Silk Petticoats \$2.49
Women's Petticoats of silk messaline and silk satin, several different styles in the lot, according and box pleated flounces, black, navy, emerald, corse and brown. Sizes 36 to 42. Regularly \$4.50. Saturday..... 2.49 (No phone or mail orders.)

Books for Winter Nights
"Scarlet Pimpernel" by Orczy; "Pam" by Von Hutten; "Unofficial Domesday" by G. H. Studd; "The Stubble" by Orczy; "Oh Christina" by J. Bell; "Great Expectations" by Dickens; "Moonstones" by Collins; "Man in the Iron Mask" by Dumas; "Shadow of a Crime" by Cain; "By Order of the King" by Hugo. Cloth bound, price, each..... 25c
200 volumes of recent fiction by the best authors. Regularly 25c. Saturday, 2 for..... 25c (Main Floor)

Toilet Needs
Lazell's Massatta Talcum Powder. This powder has the true Oriental odor. Per tin..... 25c
Bertie's Ashes of Rose Rouge, in vanity box with puff, per box..... 15c
Nail Scissors, with bent points. Special..... 25c
Atkinson's English Toilet Soaps, 4-ounce cake, verbena, lavender, violet and carnation. Special, 3 for..... 25c
Imported Nail Brushes, ventilated back, with pure bristles. Special..... 10c
Real Ebony Hair Brushes, solid backs, with 11 rows of pure bristles. Special..... 25c
DeLamme's D'Elletrite's Antiseptic Tooth Brushes, ventilated backs with pure hand drawn bristles. We guarantee this brush. Child's size, 20c; women's size, 25c; men's size, 35c.
Hand Mirrors, ebony finish with heavy bevelled plate glass. Special..... 40c
Phone direct, Toilet Department. (Main Floor)

CANDY
Main Floor and Basement.
1,000 lbs. Simpson's Special, an assortment of chocolate creams, laces, caramels and bon bons; a very dainty candy for a week-end special. Regularly 20c per lb. Saturday..... 15c
20c Per bottle..... 20c
1,000 lbs. Butter Cups, assorted, fruit flavors. Per lb..... 10c

Framed Pictures
Carbons and Hand-colored Photographs, framed in walnut or rosewood, antique gilt, fancy oak or gold burnished mouldings; sizes 14 x 18 inches to 20 x 24 inches. Regularly three to five times the sale price. Saturday..... 1.19 (Sixth Floor)

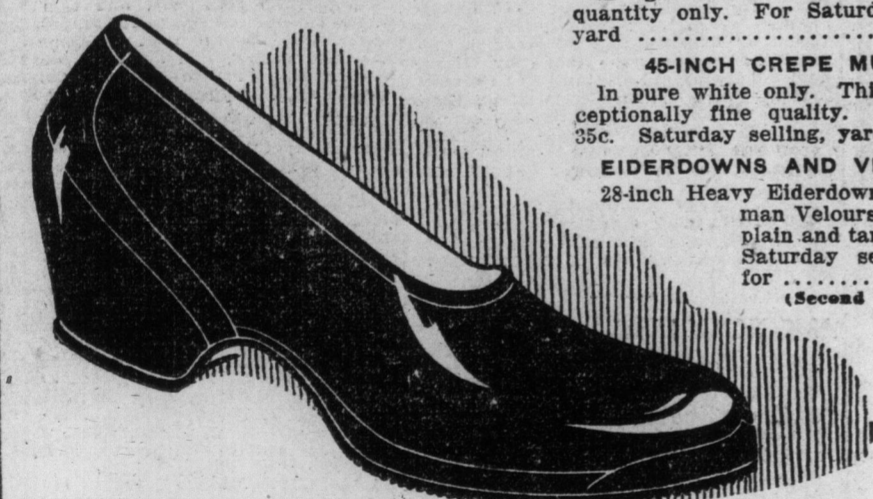
Cut Glass Salt and Pepper Shakers 24c ea.
Cut glass sterling silver tops, very pretty, clear-cut designs. Regularly 75c pair. Saturday, each..... 24c
75c TEAPOT, SUGAR AND CREAM, 49c SET.
White and gold decoration, German china, set of teapot, sugar and cream. Regularly 75c. Saturday..... 49c

English porcelain, with rose decoration, gold lined. Regularly \$4.50. Saturday special at..... 3.25
25 only odd Vegetable Dishes, blue and green decorations, without covers. Saturday to clear out..... 1.19

\$16.50 CHINA DINNER SET, \$9.95.
First quality Austrian china, 97-piece dinner set, pink rose with gold line decoration. Regularly \$16.50. Saturday special..... 9.95 (Basement)

The Grocery List
2,000 lbs. Fresh Creamery Butter, White Clover Brand, per lb..... 25c
Toasted Corn Flakes, 3 packages..... 25c
Imported Fresh Peas, per tin..... 25c
Canned Corn, 3 tins..... 25c
Egg Sugar, 4 lbs. tin..... 25c
Choice Red Salmon, Tiger Brand, per tin..... 15c
Choice Grape Fruit, 4 for..... 25c
One car California Sun-dried Oranges, good size, sweet and seedless, per dozen..... 25c
Canned Fruit, Raspberries, Strawberries and Cherries, per tin..... 15c
Gaston's Hot Sauce, per bottle..... 15c
Macaroni's Pickles, Mixed, Chow and Walnut, per tin..... 15c
Baker's Cocoa, 1/2-lb. tin..... 25c
Canned Asparagus, per tin..... 15c
Crosby's Brand Sardines, 2 tins..... 25c
Finest Mito Cheese, per lb..... 15c
Fancy Marmalade, 2-lb. tin..... 25c
Choice Olives, 16-oz. bottle, chili..... 15c
Chest's Food Beans, 10-lb. tin..... 10c
500-lb. Fresh Fruit Cakes, per lb..... 15c
Fancy Mixed Blueberries 2 lbs..... 25c

CUT FLOWERS.
1,000 Fresh Dutch Tulips or Hyacinths, Regularly 60c, per dozen..... 49c



Clearing of Rubbers, Rubber Boots and House Slippers Almost Half Price

Telephone Orders Filled. **HIGHEST GRADE KNEE RUBBER BOOTS, \$2.29.**
Dull finished, pure Para gum Knee Rubber Boots, heavy corrugated soles, solid rubber heels; sizes 6 to 12. Regularly \$4.00. Saturday special..... 2.99

Same quality, three-quarter length Rubber Boots; sizes 6 to 12. Regularly \$5.50. Saturday special..... 3.99

Same quality, hip length Rubber Boots; sizes 6 to 12. Regularly \$6.25. Saturday special..... 4.99

MEN'S HOUSE SLIPPERS, 74c.
Warm, thick, camel hair Slippers; Everett style; flexible leather soles; soft and fleecy inside; sizes 6 to 11. Saturday special..... 74c

WOMEN'S HOUSE SLIPPERS, 69c.
Cosy camel hair Slippers, with neat turn-down collar; soft padded insoles; flexible leather soles; very durable and warm; sizes 3 to 7. Saturday special..... 69c

CHILDREN'S HOUSE SLIPPERS.
Fine quality imported "Arctic" cloth, in a neat plaid pattern; turn-down collar; noiseless flexible leather soles; sizes 11 to 2. Saturday special..... 39c (Second Floor)

STORM RUBBERS.
Bright, New Rubbers, high front, stem style, not all sizes. Special: Men's, sizes 7 to 12..... 76c
Women's, sizes 2 1/2, 3, 3 1/2, 6 1/2 and 7..... 58c
Misses', sizes 11 to 13 1/2..... 47c
Child's, sizes 4 to 9..... 38c

CHILDREN'S \$1.25 WHITE LEGGINGS, 49c.
Finest quality white French felt; white kid facings and foot strap; high over-the-knee style; to fit from one to four years. Reg. \$1.25. Saturday 49c

The Robert Simpson Company, Limited