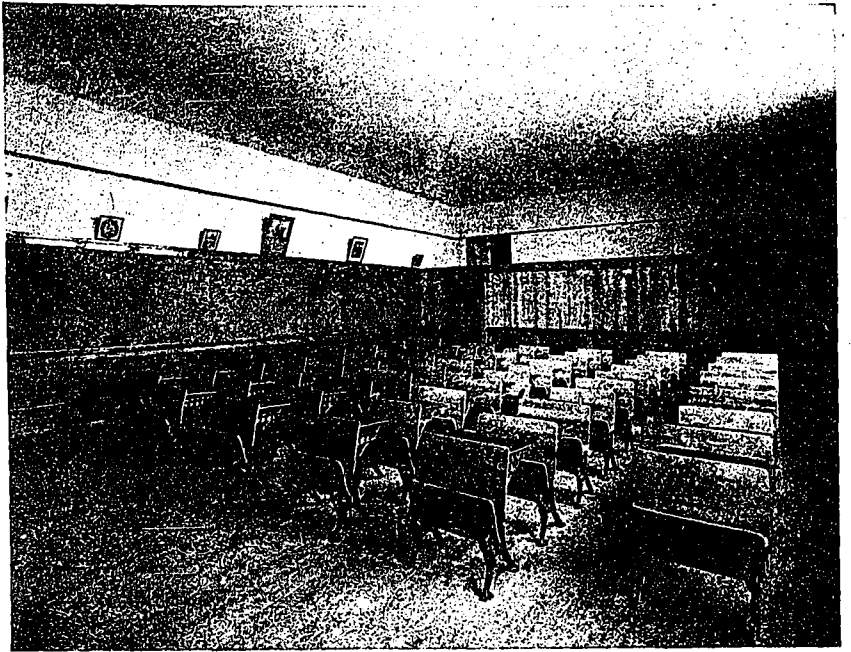


the general basement floor level.

The plumbing, heating and ventilation represent a very complete installation, embodying the most approved principles as regards design and sanitary equipment. The classrooms, in addition to being heated with a direct steam radiation, are ventilated with a modern system of forced fresh, warm air, which is originally derived from intakes located at the sides of the main entrance.

The plan also provides for the usual medical inspection rooms and similar offices, and there are spacious wardrobe compartments in connection with each of the classrooms on all three floors.



TYPICAL CLASS ROOM, NEW PARK SCHOOL, TORONTO.

Personality in Decoration

If there is one profession in which the personal equation holds sway to a remarkable extent, says the "Decorative Furnisher," it is certainly the profession of interior decorating.

A decorator is weak or strong, in his work, according to whether his personality is weak or strong. The more decided his characteristics are, the more definite and peculiar unto itself will be his work.

The man who has no definite likes and dislikes is quite apt to be a poor decorator. His thoughts do not express themselves, materially, in any unique desirable, concrete way; they are more apt to be vacillating, in fact, and the resulting schemes that grow from them will possess neither charm nor individuality.

The man of strong personality in the decorating trade, however, may or may not be an excellent decorator. If he espouses the right kind of ideas and styles, his work will be agreeable and pleasantly characteristic. But if his temperament is exotic, and easily swayed by whims and fads, his work will be peculiar and trying and very often disastrous.

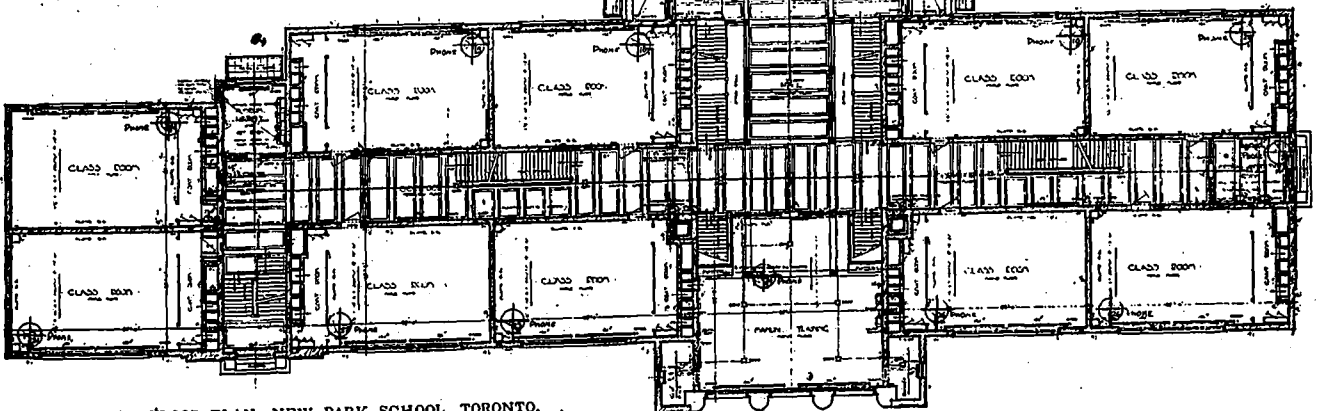
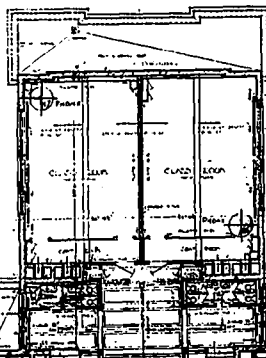
Personality in decoration is only pleas-

ing when it develops accepted schemes to a remarkable degree of richness and charm. Good taste is only satisfied when it feasts on decoration that measures up to and beyond the standard of usage and good custom.

Personality that is individual, because it departs from the accepted canons of art may appeal for a short time, because it is striking, but it is never lasting nor satisfying.

Canada's Industrial Housing Situation

In commenting on the housing situation, which still continues a subject of wide discussion in many parts of the country, vitally affecting the industrial class, Mr. Thomas Adams, town planning expert of the Commission of Conservation, says: "If Government housing were resorted to in this country it should be carried out by a joint partnership between Federal, Provincial, and municipal authorities."



UPPER FLOOR PLAN, NEW PARK SCHOOL, TORONTO.