

MIMICO.

Four Factories Start Operations. The Coming Manufacturing Centre of Canada

Seven Months Ago We Stated that by the First of December at Least Four Factories Would Be in Operation at Mimico. To-Day that Number are in Operation, and the Foundations have Been Laid for Another Large One. Our Statements Then are Verified by the Facts of To-Day.

THE remarkable progress of this now town must amaze everyone who has watched it during the past year. New streets have been graded, sidewalks laid down, huge factories built, and houses are springing up in every direction to accommodate the people who are clamoring for residences. Wonderful as the improvement has been during the year it is nothing compared to the progress that will be made in 1891, as five more extensive industries will erect their buildings and commence operations as soon as they are ready. At least 400 houses and stores will be required during 1891, to house the employes of the factories, and those who will supply them with the necessaries of life. The Grand Trunk Railway is now building a spur through the centre of the Mimico Company's lands, which will be used by the factories at present and eventually will be used for suburban service, which will probably be extended to the Asylum.

A new station will be erected by the Company at once, at the junction of this spur and the main line, to accommodate the large traffic which is daily increasing. Remember that Mimico is entirely independent of Toronto, and has unlimited resources of her own. No other town ever started with better natural advantages, an amply supply of water at small cost; drainage for an insignificant outlay. Railway and marine shipping facilities unsurpassed. Brick, stone and sand cheaper than in the City. All other building material as cheap as in the city. No special taxation for any purpose whatsoever, and no possibility of any for many years to come, and last, but not least,

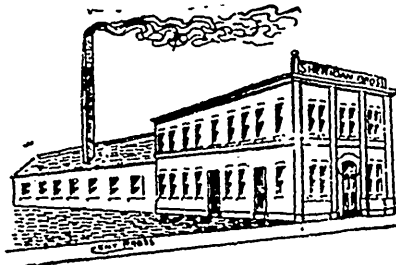
TEN IMMENSE FACTORIES,

Four of which are actually built and six more to be erected in 1891 without one cent of cost to any ratepayer. No town in Canada can boast of the same advantages, and we predict that the future of Mimico is assured, and that in a few years she will be not only the largest and wealthiest of Toronto's suburbs, but the largest suburb of any city in this Dominion.

The men who are backing Mimico are wealthy and enterprising. There is no such word as fail in their vocabulary, and having decided to make Mimico a large city they have now demonstrated without question their ability to do so.

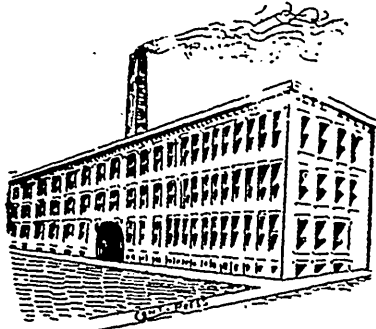
Investors who hold back must be content with second profits. The man who buys today will double his money over and over again if he makes a judicious selection.

The firm of McCuaig & Mainwaring, No. 18 Victoria Street, Toronto, and No. 147 St. James Street, Montreal, have the best land in Mimico for sale, close to the station and to the factories, and can sell at low prices, as their clients purchased from the original holders.



Sheridan Bro.'s Foundry.

This factory is in operation. The manufacture of furnaces will be carried on. The building and plant is valued at \$15,000, but large additions are to be made to the latter.



Morrison's Brass Works.

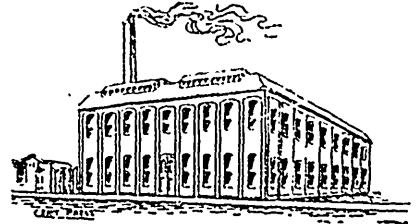
This factory is in operation. It is of solid brick, 40x150, and three stories. The work carried on is the manufacture of chandeliers and brass goods. Additions to the plant will be steadily made and the complement of men increased as fast as possible. The building and plant complete is valued at \$50,000. James Morrison is one of the most successful manufacturers of Toronto. He has been in business 26 years.



Queen City Galvanized Works.

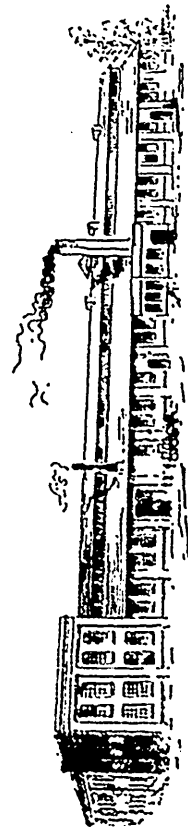
T. McDonald & Co. have already moved a large part of their machinery from their Toronto factory to Mimico. Here manufacturing on a much larger scale will be carried on, and when the factory is in full running order it will employ 200 men more than are now employed in the city factory. The main

building erected is 40x150, but it has been found necessary to erect an addition of 200x40. The building and plant are worth \$60,000.



The Eclipse Machine Works.

The Eclipse Machine Company is being promoted by Mr. Alex. Keith and others. The stock is all subscribed, and operations will be begun early in the year 1891. All kinds of boilers, engines, and lathes will be built.



The New Steel Works.

The foundations are being laid for "Ontario Steel Sink Galvanized and Boiler Stamping Works" building. The capital is \$50,000, all subscribed. James Morrison and others are the promoters. This will be a new industry in Canada entirely. The business to be carried on is the stamping of sinks, range boilers, shovels and other lines out of cold steel. The building is to be very large.