

# Many Attractive Events For the First 1924 Saturday

## CANDY SPECIAL SATURDAY

100 lbs. fresh Crystal Coconuts, while they last ..... 34c lb.  
Martha Jane Chocolates, fresh and delicious, in bulk or box..... 60c lb.

## January Linen Sale

### COMMENCING SATURDAY.

Throughout the month merchandise of merit will be offered in the Linen Section at prices that make January the logical month to replenish your supply. Watch carefully for announcements, check up your linen closet, and take advantage of these special offerings. Tomorrow we feature Kitchen Damasks, Tea Towels, Kitchen Towels, Tea Toweling, Roller Toweling and Breakfast Cloths. We particularly draw your attention to the limited quantities in this special purchase, marked at one-quarter to one-third less than regular. Read every item, it means real savings on new goods that are absolutely reliable.



### 58-INCH KITCHEN DAMASK, 79c YARD.

200 yards assorted dice and broken check, lovely weight union damask; this is woven with heavy cotton yarns in the warp to give the extra weight, surface threads are all linen, launders and wears well. January sale ..... 79c yard

### 58-INCH ALL-LINEN DAMASK, \$1.00.

You will appreciate this value, priced at about one-third less than regular, dice and broken check patterns; 123 yards only at the January sale price ..... \$1.00 yard

### 24-INCH ALL-LINEN TEA TOWELING, 39c YARD.

You will want to share in this special Saturday, lovely weight and quality, genuine Irish linen. You should contemplate a year's supply, as the value is most unusual and assures you of just 25 per cent saving; 225 yards only. January sale ..... 39c yard

### TYPED KITCHEN TOWELS, 25c EACH.

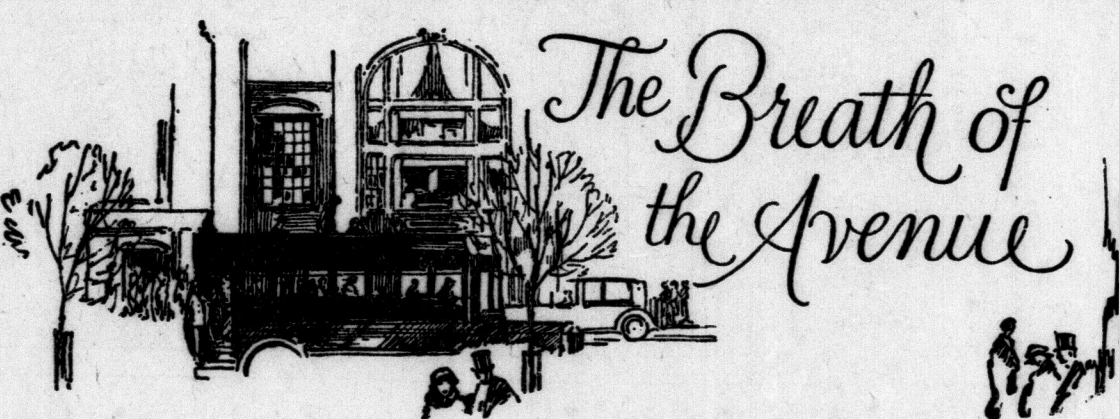
If you like that extra weight in your kitchen towels you'll find exceptional value awaiting you tomorrow in this typed kitchen towel Union Towel at ..... 25c each

### 68-INCH ALL-LINEN DAMASK, \$1.49

Three pieces only, spot, pansy and fleur-de-lis, lovely quality, partly bleached, all pure linen damasks. Now is the time to bleach damasks. January sale ..... \$1.49 yard

SEE DUNDAS STREET WINDOW TODAY.

January scintillates with values—Not the least of them is in apparel. It is the beginning of a New Year and especially gratifying now to have new clothes to wear, so these values should mean much to every man and woman. Garments that are fashionable now and will continue smart for months are only offered so reasonably to make room for Spring models. Certainly January is a treasure to Men and Women Clothes lovers. Household supplies, too, are receiving every attention.



## Presents Fifth Avenue Colors For Spring, 1924

Fashion-right colors in merchandise for the coming season given in the order of their present popularity.

### FIRST GROUP, STAPLE COLORS

—The four best staple colors for spring are given in the first group on the color card. They will form the neutral background for newer shades in the high colors.

BLACK WITH TOUCHES OF WHITE continues its run as a fashion favorite. Lustrous black silks, that add to fashion's slenderness, especially the satins and shimmering alpacas. With perhaps a few pearls here, a gardenia there, or a bit of contrasting white satin or lingerie trimming—to relieve the background of black.

NAVY, OF COURSE, is always important and this year especially so because all the blues are receiving a great deal of attention from Paris dressmakers. Navy is used for the little frock of twill. Navy also is important for the smart three-quarter length coat or costume suit of twill. Then there are a few of the new tailors in this practical navy blue.

ALL THE TANS (of which the golden tan is one of the smartest) are particularly good in soft woollens for topcoats. They are good also in satin or novelty crepes, for both sports wear and formal dresses. And they are best of all for new tailored suits when these suits are of covert cloth or men's suitings.

LIGHT GRAYS continue their inconspicuous popularity for topcoats and flannel dresses and for the formal three-piece suit or gown of crepe.

THE DARK OXFORD GRAYS in covert cloth or men's suitings are very strong for the mannish tailleur.

N.B.—The new colors may be seen at Silk Counters.

### SECOND GROUP, HIGH COLORS

—The high colors form the foreground of fashion's pictures for spring. These high colors stand out. Fashion emphasis is placed upon them. Although the staple colors predominate in numbers, all the high colors are receiving so much attention already that it is certain they are very important. Especially for sports clothes and for informal wear.

The Breath of the Avenue has covered the Palm Beach and early spring showings, with the purpose of finding out which colors are emphasized and their relative order of importance.

A count of the high-colored garments shown is taken by one group of reporters. And the relative numbers of the different colors are noted. This count is checked by another group of reporters.

The percentages vary slightly at different stores. At one store green may predominate, at another blue. The figures given strike an average from findings at all stores.

OUT OF ALL THE HIGH-COLORED GARMENTS SEEN, 30% are green, 25% are blue, 12% are oriental reds, 3% are pink and flesh tones, 2% are miscellaneous—orange, etc. And 28% are yellow. (Yellow is considered last because it is distinctly a color for resort wear.)

ALMOND GREEN has been the leading high color for over a month. This green is, as you know, a hold-over from last spring.

AND NOW THE SOFT BLUES (of the various porcelain shades—some of them have a greenish caste) are creeping up on the greens. The blues are newest of all and are receiving rapid recognition. They are already ahead of green at some shops. The medium blues, which, except as trimming details, have been out of the running for so long, ought to be ready for a come-back.

BREATH OF THE AVENUE, Smallman & Ingram Exclusive Service.

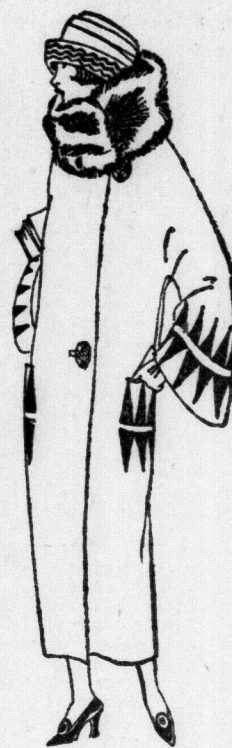
### GOLOSSES, \$3.00, \$4.50, \$4.75.

Now that winter is here we have just what you require in Golosses, made of cashmerette with fleece lining. Children's sizes, 11 to 2, with three buckles ..... \$3.00 Ladies' sizes, 2 to 7, with four buckles, \$4.50, and five buckles, ..... \$4.75

## A SATURDAY CLEARANCE OF Ladies' Coats, \$19.95

The first of our January Sale groupings will afford the better selection of models. We have made a grouping of a number of broken ranges in order to complete the size range, to offer at all one price.

One rack of Utility Coats in Burberry styles, patch or slashed pockets, belted pleat in back, half lined, raglan sleeve, made of heavy coating, with plaid back. Special price .... \$19.95



## 1-4 Off a Grouping of More Exclusive Models

One rack of our best Coats, (without fur collars), in Marvella, Fashiona and Lustrona Cloths. Special price, one-quarter off the regular selling price. These are full lined, with Canton crepes, collars fitting snugly, either chin-chin or the new draped collar, set-in or kimono sleeve, made in the new straight lines, tying at one side. Colors in taupe, brown, black, navy, sand. Prices—\$66.75, \$63.75, \$56.25, \$50.63, \$51.50, \$71.25, \$41.25, \$41.63 and \$39.00.

### FLANNEL MIDDIES

Practical for utility or sports wear is this Middy Blouse of all-wool flannel, featuring the new gathered sides, making this a snug hip fit Middy, long sleeves, patch pocket and stitch back cuffs, collar trimmed with contrasting braid laced front. Colors navy, scarlet, open, sand, paddy. Price ..... \$3.75

### JACQUETTE MIDDY

This Middy Blouse of good quality all-wool flannel is one of the most popular and dependable styles for various winter occasions, featuring the tie side and slash pocket on band at waist. The collar and smart buttoned cuffs are trimmed with contrasting silk braid; colors navy, scarlet. Price ..... \$5.75

## Ladies' Fur Coats and Children's Furs

### Specially Priced Saturday.

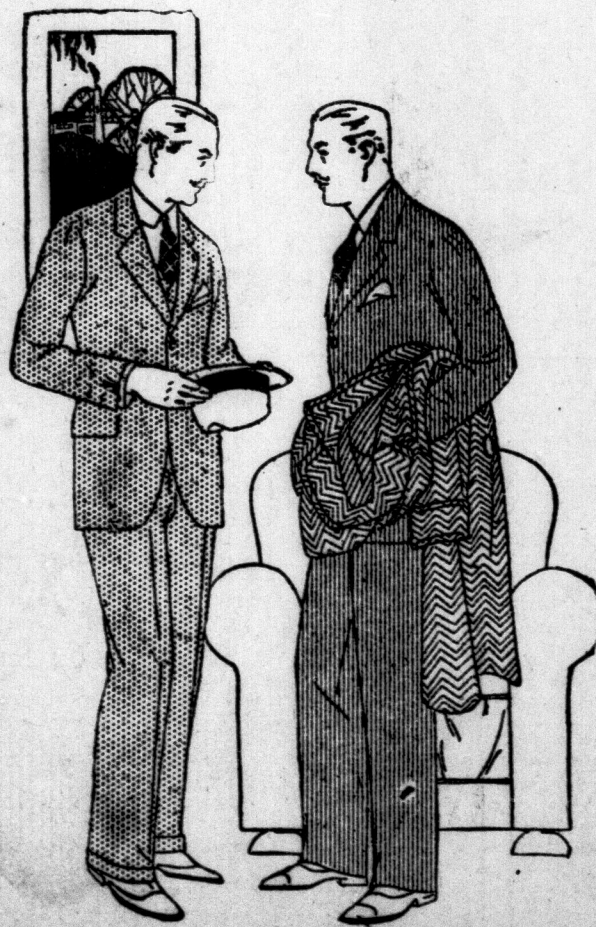
One only Electric Seal Coat, new draped collar of squirrel, mandarin sleeve with squirrel cuff; 43 inches long. Special price \$197.00  
One only Electric Seal Coat, shawl collar and cuffs of beaver, brocade lining, outside pockets, 43 inches long. Less 10 per cent ..... \$207.00  
One only Electric Seal Coat, Alaska sable collar and cuffs, mandarin sleeve lined with brocade silk; 42 inches long, \$177.00  
Balance of Children's White Thibet Furs to clear at half price. Ten only Neckpieces, \$1.88, \$2.50, \$3.12, \$3.25, \$3.75.  
Muffs, 12 only .... \$1.50 and \$2.50



## January Sale of Men's and Young Men's Suits and Overcoats One-Third to One-Half Off

Special purchases and clearing lines in high-grade apparel for men and young men makes possible this splendid opportunity to save on your Suit or Overcoat. Rich imported fabrics beautifully tailored and finished. Stylish up-to-the-minute models for men of every proportion. Many of these garments have been reduced to half their original price. See window display and be here early tomorrow. In three groups—

\$23.95, \$29.50, \$34.50



## Children's Wool Toques

1-3 to 1-2 Reg. Price **49c**

Children's Wool Toques, in heavy knits, some brushed wool; browns, grays, fawns, heathers, white, blue, almost every color in the lot; small, medium and large shapes. All one-third to one-half regular price. On sale Saturday **49c**

## Sale of Boys' Pullover Sweaters \$1.29—1/2 Regular Price

A special purchase of Boys' All-Wool Heavy Knit Pullovers, with large shawl collars; splendid warm Sweaters, in a great range of colors—grays, browns, heathers, maroons, white. Strongly made, good looking Sweaters. These are about half regular price. On sale Saturday, 9 a.m. .... **\$1.29**

**SMALLMAN & INGRAM LIMITED**

### AN EXTRAORDINARY SALE OF MEN'S ALL-WOOL

## Sweater Coats and Pullovers

1-3 To Less Than 1-2 Reg. Price Tomorrow **\$3.95**

Big Jumbo Knit White Sweater Coats. White Heavy Knit Pullovers, with big shawl collars.

A special purchase of All-Wool Sweater Coats, Pullovers, Skating Sweaters and others. Big shawl collars, in pure white, purple, heathers, contrast color tones, browns, white brushed wool—in all, a wonderful group of warm Sweaters. All pure wool. Sizes 34 to 44. Well made, with close knitted wrists, pockets, etc. Value from one-third to less than one-half regular price. On sale Saturday 9 a.m. See window display **\$3.95**

