

RED DEER MAKING RECORD

(Continued from page 1).

any of their block of land adjoining the railway yards, on the west.

Next year will also see the C.P.R. Langdon branch extended from Acme to Red Deer, and probably in the near future right through to Jasper pass.

Alberta Central Railway

It will, however, be in connection with the Alberta Central that railway construction will take place here in the immediate future. A great many reports are in circulation in regard to the operations of that company, many of which are without foundation, but enough information has been verified to guarantee the statement that construction work will be commenced in a very few weeks, or, it may be in a few days. The charter calls for the commencement of work before August 1 next and no extension of time has been granted. The final location of the proposed line has been made westward to Rocky Mountain House, 66 miles eastward to the crossing of the Red Deer river, about 15 miles northeast of Carbon, and a party of surveyors are operating east of that river.

The head offices of the engineering staff are at Red Deer and preparations are being made for letting contracts and commencing construction work. It is no secret that at least two of the transcontinental lines have endeavored to obtain control of the charter for this road, which carries the usual Dominion government cash subsidy, but I was informed by an officer of the company that it is largely English capital that is behind the project. Be this as it may, the project which, for so many years has "hung fire" is at last assuming a more tangible appearance, and gives every evidence of becoming an accomplished fact in the near future.

Route of the Road

The charter of the Alberta Central railway is for a road from Moose Jaw to Yellow Head pass, a distance of 655 miles from Moose Jaw to Red Deer is 120 miles and from Red Deer to the pass is 235 miles. A glance at the map will show that a line, almost straight, drawn between the two terminal points, would pass through Red Deer. The station and yards of the new railway have been located on the south east side of the town, about three quarters of a mile from the post office and a quarter of a mile from the town limits. The engineering difficulties prevented entrance direct into the center of the town, but connection will be made with the C. & E. by means of a "Y".

Through the courtesy of Mr. Carlyle Moore, who represents the company in Red Deer, I was shown the plans of the yards and also visited the site, which is an almost ideal one for railway purposes and is easy of access from every direction. The plans for yardage of the Alberta Central at Red Deer embrace an area of about 350 acres and are laid out on the most modern railway ideas. The plans make provision for crossing the C. & E. railway by means of an overhead bridge. The line will cross the Red Deer river west about 4 miles from the town where there is an excellent crossing; will skirt Sylvan Lake, Red Deer's beautiful summer resort, and thence in an almost direct line to Rocky Mountain House, opening up a country exceedingly rich in agricultural, mineral and timber wealth eastward, the

crossing of the Red Deer river will be about midway between the crossings of the C.N.R. and the G.T.P. The Saskatchewan river crossing will be about 50 miles south of Outlook, on the Moose Jaw-Lacombe branch.

The grade of the proposed road is said to be the highest standard gauge of any road traversing the country from east to west, it being at no place more than 4-10 of one per cent, and with no curvature greater than three degrees. To maintain this degree of grade and curvature, will, especially to the west and at the river crossings, entail considerable heavy work.

I have purposely gone into these details of the Alberta Central railway company on account of the great influence, its construction is bound to have on the immediate future prosperity of Red Deer, and the country tributary to it, especially to the west.

Canadian Northern Projects

In all this railway activity that will be going on around Red Deer, the Canadian Northern will, without doubt, have a share. The trial survey for a short line from Calgary to Strathcona was made last fall, and passes through Red Deer townsite, crossing the river near the mouth of Waskasoo Creek and skirting the hills on the east side of the town. While nothing definite

be developed just as soon as that country is supplied with railway facilities, cheap water power can be developed at the Canyon of the Red Deer river, eight miles east of the town where the river narrows between almost perpendicular rocky banks, which afford unique advantages for developing an immense water power. A considerable start has already been made in the establishing manufacturing industries, all of which, although comparatively in their infancy, give great promise of developing into enterprises of considerable magnitude.

Industries Established

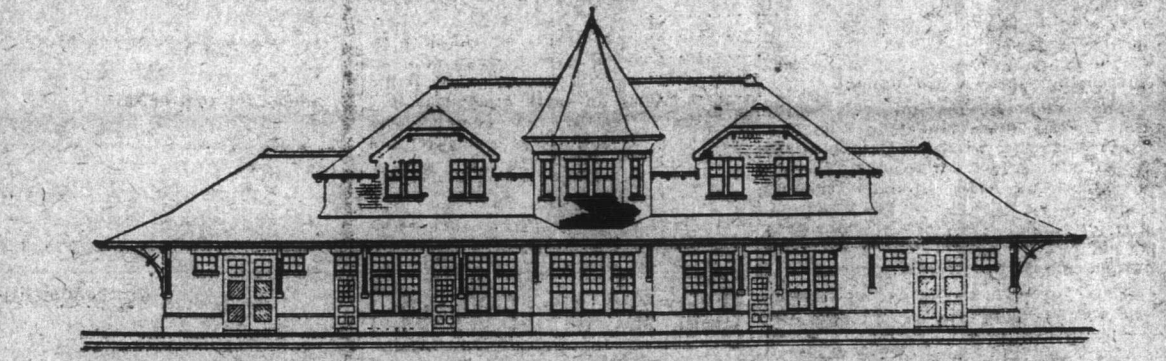
The Great West Lumber Co. is Red Deer's oldest and largest manufacturing industry, and has been in successful operation for the past five years and this season intends to manufacture upwards of \$500,000 worth of lumber. It employs on an average the entire year 125 men in its timber limits and in its saw mills. The limits are located in the foothills and in the mountains, and the logs are floated down the river to the mill at Red Deer, where the company has put in extensive facilities for storing the logs brought down during the high water season. The company has enough timber in its own limits to keep its Red Deer mill in operation for many years to come.

tion on the superior quality and workmanship of its goods.

The Van Slyke Plow Co. is another industry started in Red Deer this year and judging from the manner in which its output so far has been secured by the farmers it also will in a short time be one of the leading industries of Alberta. The distinguishing feature of the Van Slyke plow is its angling coulter, light draft, left out and long sweep mould board, 7 feet long, which turns the soil completely over and prevents any possibility of its turning back. Every part of the plow, except the axle and a few parts of the adjusting levers, is manufactured in Red Deer.

Mr. Van Slyke, the inventor was a homesteader in the Red Deer district and worked out his plan from his experience on his own farm. Being a mechanic, he made several plows for himself and his neighbors which worked so satisfactorily that he conceived the idea of starting a factory in Red Deer. He holds patents covering Canada, United States, Argentina and most of Europe. The company has secured orders sufficient to take its complete output for the next three months, with day and night shifts and will in a short time commence the erection of a large factory.

The Red Deer Foundry and Iron



The new Red Deer station to be finished this season. The elevation facing the town.

is known as to when this line will be built, the fact that the company is spending so much money on surveys, is evidence of its intentions in regard to the line. The bonds of the C.N.R. for a line east and west of Red Deer to its Vegreville-to-Calgary branch on the east and 25 miles west to Medicine River, have been guaranteed by the provincial government. It is also stated that a line is projected from the crossing of the Red Deer river to the Goose Lake branch of the C.N.R. to the Yellowhead pass, which if built must pass through the town of Red Deer.

Although the G.T.P. has so far made no move in the direction of getting in to the country west of the C. & E. it is not at all likely that it will allow its big rivals to monopolize the trade of that large rich area.

Other Advantages of Red Deer

So much for Red Deer's railway prospects. While these are sufficient to justify the hopes of its citizens in the future of the town, there are many other advantages, on which these hopes are founded, some of which are largely dependent on railway development.

Red Deer has special advantages for manufacturing purposes, the essentials for which are cheap power, an abundant supply of raw material and good water. In addition to immense areas of steam coal, to the west, which will

In addition to the Great West, there are three other saw mill outfits in operation in the district which draw their supplies from Red Deer and ship their surplus output from this point. There are immense areas of timber lands west of and in the vicinity of Rocky Mountain House only awaiting railway facilities to be developed into a source of great wealth.

The two Red Deer brick yards last year had a combined output of over 3,000,000 bricks, which found a ready market locally in the towns along the C. & E. and in the city of Calgary. This year the output will be considerably greater and both yards are being run to their capacity to keep pace with the demand. They are equipped with the most modern brick making appliances and have large deposits of the very best clay for the manufacture of a first class article.

The Gaetz Manufacturing Co. established about three months ago a factory for the manufacture of overalls, shirts, etc., which is proving a great success and gives promise of developing into a very large industry. Twelve machines are being operated at present but the demand for the goods is so great that the company has deemed it advisable to erect a large factory and greatly increase its output by installing additional machinery. The aim of the company is to turn out only a first class article and to build up a reputation.

works, is another growing industry in the town, which is a great convenience to the farmers of the district.

Cushing Bros of Calgary have had a site of five acres reserved for the erection of a planing mill and sash and door factory, which will add one more to Red Deer's manufacturing industries.

Red Deer as a Place of Residence

As a place of residence with beautiful natural surroundings, the town of Red Deer is unsurpassed by any place in the province of Alberta and nature has been indeed kind to the town in that respect. When I visited the town last year I wrote of it in the following terms: "With the big river in the foreground, finely wooded hills covered with spruce, poplar, and cottonwood trees at the base of which meanders the serpentine purling Waskasoo Creek, the valley presents one of the most ideal and romantic scenes that can be imagined. Levelly homes, set in shady groves, with well kept lawns and grounds, greet the eye and cannot fail to inspire a love of the beautiful in old and young. The shaded arboreal, delightful walks, the scent of the spruce, the balm and the innumerable varieties of wild flowers make it one of the loveliest retreats for early spring and summer enjoyment."

Seen today although about a month earlier in the season, the same sentiment

is another growing industry in the town, which is a great convenience to the farmers of the district.

Cushing Bros of Calgary have had a site of five acres reserved for the erection of a planing mill and sash and door factory, which will add one more to Red Deer's manufacturing industries.

Red Deer as a Place of Residence

As a place of residence with beautiful natural surroundings, the town of Red Deer is unsurpassed by any place in the province of Alberta and nature has been indeed kind to the town in that respect. When I visited the town last year I wrote of it in the following terms: "With the big river in the foreground, finely wooded hills covered with spruce, poplar, and cottonwood trees at the base of which meanders the serpentine purling Waskasoo Creek, the valley presents one of the most ideal and romantic scenes that can be imagined. Levelly homes, set in shady groves, with well kept lawns and grounds, greet the eye and cannot fail to inspire a love of the beautiful in old and young. The shaded arboreal, delightful walks, the scent of the spruce, the balm and the innumerable varieties of wild flowers make it one of the loveliest retreats for early spring and summer enjoyment."

Seen today although about a month earlier in the season, the same sentiment

(Continued on page 5)



A Splendid Speculation

A 480 acre wheat farm, 4 1/2 miles from Stavely.—The Elevator Town of Southern Alberta.—280 ACRES GROWING CROP IN SPLENDID CONDITION. The wheat crop (280 acres) on this farm will be at least 8,000 bushels and oats (20 acres) at least 3,000 bushels. Every acre can be cultivated.

Good 6-room house, large stable and granaries on the place. Substantial fence. Owner engaged in other business, must sell at once. \$40 per acre WITH ONLY \$3,500 CASH. Balance on easy terms. The greatest snap in farm land on the market. COME DOWN AT ONCE, and see the property.

WILFORD & BORGAS

The Landmen of Stavely, "The Elevator Town of South Alberta"

Good Farm Propositions

One mile west of the city limits. Ten acres, all broken, black loam clay subsoil; one acre sown with alfalfa, one quarter acre in rye, remainder in oats. Over \$4,000 worth of stock, composed of hogs, muttons and horses and calves. Two wells and a windmill. Buildings worth over \$2,000. Machinery \$1,000; \$2,500 clear profit was made off this ranch last year. As a dairy, hog and vegetable farm, \$5,000 clear profit can be made this year. Price, \$10,000, half cash. Will sell ranch without stock for \$6,500; \$5,000 cash.

One hundred and sixty acres half mile from town of Three Hills. 45 acres broken. House built stable for eight horses and twenty cows. Granary 18x20, hen house 12x14, well 35 feet deep. Seven head of horses, consisting of 1 team of work horses, 1 good brood mare, with colt; 1 2-year-old colt; 1 yearling, 50 head of cattle, consisting of 15 milk cows, balance in young cattle; 1 thoroughbred bull and about 35 fowl. Wagon, mowing machine, horse rake, plow, disc harrow, drag harrow, cream separator, ocean cans, two teams harness and saddle and other small articles. Price \$7,500, \$5,000 cash, balance in yearly payments. Will sell farm alone for \$5,000, \$2,500 cash, and balance in yearly payments.

320 acres of A1 land east of Carleton Place. Can all be broken. Price \$20 per acre.

H. M. SPLANE & CO.

PHONE 1825 Room 3, Armstrong Block Open Evenings BOX 521

Two Good Offers in Land

640 acres 5 miles from Airdrie, fine black soil, every acre plowable, price for a few days, \$21 per acre.

320 acres 2 1/2 miles from Airdrie, good black soil, all plowable, \$20 per acre on easy terms.

O. G. DEVENISH & CO.

ARMSTRONG BLOCK PHONE 494

A Warning to the Citizens of Calgary

Only Five More Days in Which to Double Your Money. Have You Seen

BOWVIEW EXTENSION?

Price Today \$150 Per Acre

Price June 1st \$200 Per Acre

For the next five days \$500 handles ten Acres in BOWVIEW EXTENSION. On June 1st the same \$500 will be worth \$1000.

We have always made money for our clients in Acreage, and we can make YOU some more.

ONLY FIVE MORE DAYS

Easy Terms

Autos at Your Service

ASTLEY & SHACKLE

THE ACREAGE EXPERTS

PHONE 1578

116 8th Ave. West

Ind

This disease is a great deal of PSYCHIC cases. It is When directed by a General Dis Burn and Pa hesitate a mo

Mr. A seven years ago of this bro

NO HOW

It prevents and completely weariness, lo

For

PS

GRE

BRI

Lots 5, 6, 7 and 5 months Many other

PH

PH

PH

PH

PH

PH

PH

PH

PH

PH

PH

PH

PH

PH

PH

PH

PH

PH

PH

PH

PH

PH

PH

PH

PH

PH

PH

PH

PH

PH

PH

PH

PH

PH

PH

PH

PH

PH

PH

PH

PH

PH

PH

PH

PH

PH

PH

PH

PH

PH

PH

PH

PH

PH

PH

PH

PH

PH

PH

PH

PH

PH

PH

PH

PH

PH

PH

PH

PH

PH

PH

PH

PH

PH

PH

PH

PH

PH

PH

PH

PH

PH

PH

PH

PH

PH

PH

PH

PH

PH

PH

PH

PH

PH

PH

PH

PH

PH

PH

PH

PH

PH