

## ..The Planet..

S. STEPHENSON, Proprietor.

## MATERIALISM.

The Rev. Dr. Percy Stickney Grant, a New York Episcopalian, has been giving expression to some very emphatic views on the distribution of wealth. The chief criticism generally made against the multi-millionaire is in regard to the effect he has upon economic conditions—the dangerous accumulation of power in a few irresponsible hands, the abject poverty which is the corollary of enormous wealth. But Dr. Grant sees an even more insidious danger than this. He preached a baccalaureate sermon on Sunday to the College of the City of New York, in which he called the spirit of materialism the greatest temptation that would meet the path of the graduates. The moral influence of these enormous fortunes upon an age which is taught to regard them as the finest examples of success—this may well be as dangerous as mere inequalities of wealth and position. As dangerous and far more widespread, for it affects every class, not only the industrial and operative, but the professional and cultured, destroyed their whole perspective of life and its ideals and objects.

Many of the men who have amassed great fortunes attach too much importance to the rough and ready spirit which they believe to have aided them most materially. Mr. Schwab, we may conclude, has little confidence in education along higher lines as an assistance in business affairs.

The men of millions have power. Wherever they throw the vast impulse of their capital the labors are accomplished. They have unlimited power. Young men see this and what is the result? They throw themselves like fogies into the furnace of material production.

The enormous fortunes of the rich oppress the youth of America. The constant realization of wealth which has been amassed in the country will bear down upon the aspiration of Americans. Freedom from this shadow depends alone upon the attitude with which it is opposed. The only salvation of American youth, the only means of maintaining the liberty of our forefathers is a belief in God, the only true, healthy, rigorous instinct which alone can preserve the Americans from the shadows burden of Materialism.

There is too much reason to fear that just at present a belief in Mr. Schwab and Mr. Carnegie, and in what they represent, is more present to the average young man's mind than the belief in God, in justice, and in purity. We cannot but believe that these men are poor ideals to contemplate and poor models to follow, and that happiness for oneself and usefulness to society do not lie along those paths. Yet, between the life of MacKay of Formosa and that of Carnegie of Pittsburgh and Homestead, how few young men today would hesitate to choose?

## STAND BY OUR OFFICERS.

In view of recent occurrences and the thoughtless and injurious comment of many citizens, the following, contributed by "Lally Bernard" to Saturday's Globe, will prove helpful by a careful and thoughtful perusal. The Planet will possibly have more to say on the same subject, at a later date.

The Globe says:—  
In thinking over the circumstances which led to the death of a public servant the thought comes of how much we owe to the constabulary and how little show of gratitude we make all the guardians of the King's peace—Detective, constable, policeman and the like; those men who by day and night in sunshine and in storm, with steady fidelity and heroism, expose themselves to hardship and peril in order that we, our lives, and our property, may be secure—how little we give them in return! Not only so, but by one of the strongest and most misguided trends of human frailty, a large number of even the law-abiding classes of the community look upon them as enemies, or at least as a kind of necessary nuisance, who are to be lampooned and insulted with impunity. It is amazing that it should be so. These officers, who are picked men, are only paid fair wages at best for the discharge of arduous and responsible duties calling for the highest fidelity and conspicuous courage. They are subject to many privations and the most rigorous discipline, and hourly carry their lives in their hands to protect society from the criminal classes. One would imagine that they would be the subject of constant favor and solicitude on the part of the public; and yet how seldom does one witness even a faint show of these sentiments! Ever and anon I read of some unfortunate policeman being almost beaten to death by a gang of pitiless ruffians, who have no quarrel with him as an individual; merely that he represents the majesty of the law.

## Eczema

How it reddens the skin, itches, oozes, dries and scales!  
Some people call it tetter, milk crust or salt rheum.  
The suffering from it is sometimes intense; local applications are resorted to—they mitigate, but cannot cure.  
It proceeds from humors inherited or acquired and persists until these have been removed.

**Hood's Sarsaparilla** positively removes them, has radically and permanently cured the worst cases, and is without an equal for all cutaneous eruptions.  
Hood's Pills are the best cathartic. Price 25 cents.

## Screen Doors and Windows

Painted, Filled and Hung, Complete... Orders Filled Promptly at

## Blonde Bros. &amp; Co.

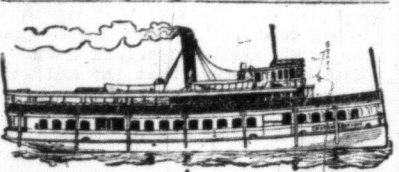
and is an obstacle to their machinations. In the same column one is liable to read of a criminal trial, in which some gentleman of the long robe, convulses the court room and secures the acquittal of his guilty client simply by the cheap and unworthy trick of heaping insult and ridicule on the detective or policeman who happens to be called, all against his own wish, as a witness. It is always assumed that these men depose to what is false to secure conviction of the accused persons, and are capable of every crime in the catalogue, without the slightest proof. Opprobrious epithets are hurled at them without let or hindrance, while too often intelligent men of Character and position enjoy the fun. Surely this is a disgrace to our civilization! Many of these men are heroes, and scarcely one of them could maintain his position for a week were he not made of good stuff. They are the men to whom we should all be proud to offer every mark of courteous sympathy and approval, and who should be supported constantly by popular respect and consideration.

Did somebody say "Slept?"  
When there is news to give The Planet gives it—and gives it promptly.

There are children in this city seven or eight years old who have never smoked a cigarette.

When was it—yesterday or the day before—that we were kicking about the cold weather and backward season?

The double diurnal period in air pressure has long been a puzzling phenomenon to meteorologists.—Simcoe Reformer.  
Get out! says the Hamilton Spectator. That the rationing of the ultimatum universally combated with the disquisitionary hypotheuc of latitudinarian circumambulation in its indiosyncratic tergiversation is a mythological fact of which every



## City of Chatham

Will make a round trip from CHATHAM to DETROIT every Monday, Wednesday, Saturday

Leaving Renkin Dock, Chatham, at 7:30 a.m. and returning leaves Detroit (foot of Randolph St.) at 5:30 p.m. Departure time of 4 o'clock Chatham time.

ONE WAY TRIP:  
Leave Chatham for Detroit on Thursday morning at 7 o'clock and leave Detroit for Chatham on Friday morning at 5:30 Detroit City time or 9 o'clock Chatham time.

Round Trip... 60c Single Trip... 30c Children under 12 years half fare. Tickets good for day of issue only.

AGENTS:  
Stringer & Co. Chatham  
Odette & Wherry Windsor  
John Stevenson Detroit

E. CORNETT CAPTAIN

FREE! FREE! FREE!

## CIRCUS DAY

We want to get acquainted with the people of Chatham and surrounding district. We take these means of doing so. We will give free to every purchaser of a suit of clothes over \$2.50, an admission ticket to the Circus, from this day to the 26th. BOYS, we want to make our store your store. Your money talks, so do our prices, let's introduce them. COME WITH THE CROWD. You are sure to get what you want. The best quality and lowest prices. REMEMBER THE STORE.

See Our WINDOW

G. Meynell, 1 DOORS WEST OF MARKET ON KING

schoolboy is indubitably and concatenatiously cognisant.

Canada's aggregate trade, according to the returns for the eleven months ending May 31 amounted to \$329,352,721, as compared with \$308,548,034 for the same period of the previous fiscal year. The increase is made up almost entirely in exports from the mine, which have gone up \$20,000,000. Manufacturers have increased over two millions, while agriculture has fallen off about the same amount.

## KEEPS US ALL GUESSING.

Montreal Herald.  
Mrs. Botha is not the first woman who has kept people guessing about her intentions.

## OUR TONSORIAL ARTIST.

Toronto Star.  
A prisoner in a Chatham court room recently grabbed a razor and ran amuck. Even the Judge had a close shave.

## COUNTY COUNCILS, TOO.

Hamilton Herald.  
The escape of three desperate criminals from Chatham jail should cause jail governors throughout the country to look well to their bars and bolts.

## ADDING INSULT TO INJURY.

Hamilton Herald.  
There are several types of the bicycle scorching, and the most offensive of them all is the fellow who rides through the streets at high speed with his hands off the handlebars.

## A QUICK SHOT.

London Globe.  
The other day as some volunteers from the war were marching home to the depot, a hulking loafer yelled out, "What are you coming home for?" A voice from the ranks retorted without a second's delay, "What are you stopping at home for?" The loafer has not yet found an answer. Perhaps he will take the hint.

## IT WAS HIS DEAL.

London Globe.  
The morality of card-playing in mining centres is well instanced by a fresh chronicle of fact. "Did you see," said a bystander to a friend, "that man deal himself four aces from the bottom of the pack?" "Well," replied the friend, who, no doubt, had played the game, "wasn't it his deal?" As Gilbert argues, "If a man mayn't give himself four aces in his own deal, in whose deal may he?"

## A PACIFIC ILLUSION.

London Truth.  
To men whose memories reach back half a century there is a touch of irony in the spectacle of a naval and military exhibition to celebrate the Jubilee of the Crystal Palace. What a commentary upon the vanity of the illusions of 1851! The great exhibition was to usher in a reign of peace to bind the nations together in universal brotherhood, to substitute friendly rivalry for art and science and industry for the barbarous conflicts of armies and fleets. But those bright hopes were soon shattered, and now, after the lapse of fifty years, the building consecrated to the triumphs of peace is given up to the worship of Mars.

## Chatham TO CLEVELAND, O.

\$1.25 return \$2.35

VIA ROND EAU AND STEAMER URANIA

Commencing June 17th the Lake Erie Nav. Co. Ste. Urania will leave Rond Eau every Monday, Wednesday and Friday, at 4 p.m. and Sunday, 11:30 p.m. for Cleveland, Ohio.

Special train leaves Chatham Monday, Wednesday and Friday 1 p.m. to connect with boat.

L. E. TILSON, T. MARSHALL, Gen. Agt. Chatham. A.G.P.A., Walkerville

Cook's Cotton Root Compound

Is successfully used monthly by over 7,000,000 ladies. Safe, efficient. Ladies ask your druggist for Cook's Cotton Root Compound. Take no other, as all mixtures, pills and injections are dangerous. Price, No. 1, 51c per box; No. 2, 10c degrees stronger, 85c per box. No. 1 or 2, mailed on receipt of price and 2-cent stamp. The Cook Company Windsor, Ont.

No. 1 and No. 2 are sold in Chatham by C. H. Gunn & Co., Central Drug Store.

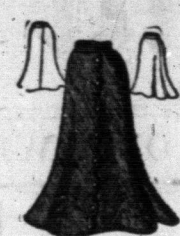
FREE! FREE! FREE!

## CIRCUS DAY

We want to get acquainted with the people of Chatham and surrounding district. We take these means of doing so. We will give free to every purchaser of a suit of clothes over \$2.50, an admission ticket to the Circus, from this day to the 26th. BOYS, we want to make our store your store. Your money talks, so do our prices, let's introduce them. COME WITH THE CROWD. You are sure to get what you want. The best quality and lowest prices. REMEMBER THE STORE.

See Our WINDOW

G. Meynell, 1 DOORS WEST OF MARKET ON KING



## Ready-to-Wear Garments

The convenience of being able to buy perfect-fitting Ready-to-wear Garments in pretty, up-to-date styles, in many cases for little more than the price of the material, is bringing lots of business to our Ready-to-wear Department. Here are garments and prices that should interest cash buyers.

## LADIES' WRAPPERS, AT 75c.

Made from good quality print; splendid range of patterns, fast colors, fitted linings, very full skirt, pretty style, worth 90c, special.

## LADIES' WRAPPERS AT \$1.00 AND \$1.25.

Fine quality, choice patterns, prettily made and trimmed, fitted linings, extra well finished, wonderful values at \$1.25 and \$1.00.

## HANDSOME WRAPPERS AT \$1.50 EACH.

Fine Muslin and Percale wrappers, large range of choice patterns and colorings, fast dyes, handsomely made, prettily trimmed, extra wide skirt, with deep full flounce, extra values at \$1.75 and \$1.50.

## BEAUTIFUL MUSLIN DRESSES AT \$3.90 EACH.

Fine printed dimity dresses, latest style skirt, with four fine pleated ruffles around bottom, perfect fitting waist, with scalloped ruffle down front, latest sleeves and collar, splendid range of fast colors, special at the dress.

## 75c COLORED SHIRT WAISTS AT 50 CENTS EACH.

About fifteen dozen in the lot; fine print and percale, all this season's make, splendid range of patterns, in last colors; regular values up to 75c each, special, at each.

## WHITE SHIRT WAIST BARGAINS.

Fine India Lawn Waists, fine, all-over tucks, and hemstitched front and back, bishop sleeves, good value at \$1; our special price.

## A \$3.50 White Waist at \$2.90.

This waist is made of finest linen de sylvie, all-over, hemstitched and val insertion front, bolers effect, val insertion, pleated edged with double ruffle of fine val lace down front, all-over val in-

## did range of fast colors, special at the dress.

White India Lawn Waists at \$1.25 each, superior quality, linen finish India lawn, sheer quality, made with 64 fine tucks in clusters in front, 55 fine tucks on back, new bishop sleeve, matchless value at each.

## A \$3.50 White Waist at \$2.90.

This waist is made of finest linen de sylvie, all-over, hemstitched and val insertion front, bolers effect, val insertion, pleated edged with double ruffle of fine val lace down front, all-over val in-

## A \$3.50 White Waist at \$2.90.

This waist is made of finest linen de sylvie, all-over, hemstitched and val insertion front, bolers effect, val insertion, pleated edged with double ruffle of fine val lace down front, all-over val in-

## A \$3.50 White Waist at \$2.90.

This waist is made of finest linen de sylvie, all-over, hemstitched and val insertion front, bolers effect, val insertion, pleated edged with double ruffle of fine val lace down front, all-over val in-

## A \$3.50 White Waist at \$2.90.

This waist is made of finest linen de sylvie, all-over, hemstitched and val insertion front, bolers effect, val insertion, pleated edged with double ruffle of fine val lace down front, all-over val in-

## A \$3.50 White Waist at \$2.90.

This waist is made of finest linen de sylvie, all-over, hemstitched and val insertion front, bolers effect, val insertion, pleated edged with double ruffle of fine val lace down front, all-over val in-

## A \$3.50 White Waist at \$2.90.

This waist is made of finest linen de sylvie, all-over, hemstitched and val insertion front, bolers effect, val insertion, pleated edged with double ruffle of fine val lace down front, all-over val in-

## A \$3.50 White Waist at \$2.90.

This waist is made of finest linen de sylvie, all-over, hemstitched and val insertion front, bolers effect, val insertion, pleated edged with double ruffle of fine val lace down front, all-over val in-

## A \$3.50 White Waist at \$2.90.

This waist is made of finest linen de sylvie, all-over, hemstitched and val insertion front, bolers effect, val insertion, pleated edged with double ruffle of fine val lace down front, all-over val in-

## A \$3.50 White Waist at \$2.90.

This waist is made of finest linen de sylvie, all-over, hemstitched and val insertion front, bolers effect, val insertion, pleated edged with double ruffle of fine val lace down front, all-over val in-

## A \$3.50 White Waist at \$2.90.

This waist is made of finest linen de sylvie, all-over, hemstitched and val insertion front, bolers effect, val insertion, pleated edged with double ruffle of fine val lace down front, all-over val in-

## A \$3.50 White Waist at \$2.90.

This waist is made of finest linen de sylvie, all-over, hemstitched and val insertion front, bolers effect, val insertion, pleated edged with double ruffle of fine val lace down front, all-over val in-

## A \$3.50 White Waist at \$2.90.

This waist is made of finest linen de sylvie, all-over, hemstitched and val insertion front, bolers effect, val insertion, pleated edged with double ruffle of fine val lace down front, all-over val in-

## A \$3.50 White Waist at \$2.90.

This waist is made of finest linen de sylvie, all-over, hemstitched and val insertion front, bolers effect, val insertion, pleated edged with double ruffle of fine val lace down front, all-over val in-

## A \$3.50 White Waist at \$2.90.

This waist is made of finest linen de sylvie, all-over, hemstitched and val insertion front, bolers effect, val insertion, pleated edged with double ruffle of fine val lace down front, all-over val in-

## A \$3.50 White Waist at \$2.90.

This waist is made of finest linen de sylvie, all-over, hemstitched and val insertion front, bolers effect, val insertion, pleated edged with double ruffle of fine val lace down front, all-over val in-

## A \$3.50 White Waist at \$2.90.

This waist is made of finest linen de sylvie, all-over, hemstitched and val insertion front, bolers effect, val insertion, pleated edged with double ruffle of fine val lace down front, all-over val in-

## A \$3.50 White Waist at \$2.90.

This waist is made of finest linen de sylvie, all-over, hemstitched and val insertion front, bolers effect, val insertion, pleated edged with double ruffle of fine val lace down front, all-over val in-

## A \$3.50 White Waist at \$2.90.

This waist is made of finest linen de sylvie, all-over, hemstitched and val insertion front, bolers effect, val insertion, pleated edged with double ruffle of fine val lace down front, all-over val in-

## A \$3.50 White Waist at \$2.90.

This waist is made of finest linen de sylvie, all-over, hemstitched and val insertion front, bolers effect, val insertion, pleated edged with double ruffle of fine val lace down front, all-over val in-

## A \$3.50 White Waist at \$2.90.

This waist is made of finest linen de sylvie, all-over, hemstitched and val insertion front, bolers effect, val insertion, pleated edged with double ruffle of fine val lace down front, all-over val in-

## A \$3.50 White Waist at \$2.90.

This waist is made of finest linen de sylvie, all-over, hemstitched and val insertion front, bolers effect, val insertion, pleated edged with double ruffle of fine val lace down front, all-over val in-

## A \$3.50 White Waist at \$2.90.

This waist is made of finest linen de sylvie, all-over, hemstitched and val insertion front, bolers effect, val insertion, pleated edged with double ruffle of fine val lace down front, all-over val in-

## A \$3.50 White Waist at \$2.90.

This waist is made of finest linen de sylvie, all-over, hemstitched and val insertion front, bolers effect, val insertion, pleated edged with double ruffle of fine val lace down front, all-over val in-

## A \$3.50 White Waist at \$2.90.

This waist is made of finest linen de sylvie, all-over, hemstitched and val insertion front, bolers effect, val insertion, pleated edged with double ruffle of fine val lace down front, all-over val in-

## Ladies' Crank, Duck, Drilling and P. K. Skirts.

Ladies' skirts, good quality crash, full sweep, deep facing, lengths 38 to 43 inches, special each.

## Ladies' crash skirts, latest cut,

trimmed with narrow navy or white folds around bottom, assorted sizes, special each.

## Crash Walking Skirts, extra qual-

ity, deep facing with eight row fine stitching around bottom, welted seams, lengths 37 to 40 inches, very special at.

## Duck Skirts, latest cut, made with

cluster of pleats down sides, full flare, in plain navy and butcher blue, also navy and white and black and white polka dots, extra values at \$1.00, \$1.25, and \$1.50.

## Duck Skirts, latest cut, made with

cluster of pleats down sides, full flare, in plain navy and butcher blue, also navy and white and black and white polka dots, extra values at \$1.00, \$1.25, and \$1.50.

## Duck Skirts, latest cut, made with

cluster of pleats down sides, full flare, in plain navy and butcher blue, also navy and white and black and white polka dots, extra values at \$1.00, \$1.25, and \$1.50.

## Duck Skirts, latest cut, made with

cluster of pleats down sides, full flare, in plain navy and butcher blue, also navy and white and black and white polka dots, extra values at \$1.00, \$1.25, and \$1.50.

## Duck Skirts, latest cut, made with

cluster of pleats down sides, full flare, in plain navy and butcher blue, also navy and white and black and white polka dots, extra values at \$1.00, \$1.25, and \$1.50.

## Duck Skirts, latest cut, made with

cluster of pleats down sides, full flare, in plain navy and butcher blue, also navy and white and black and white polka dots, extra values at \$1.00, \$1.25, and \$1.50.

## Duck Skirts, latest cut, made with

cluster of pleats down sides, full flare, in plain navy and butcher blue, also navy and white and black and white polka dots, extra values at \$1.00, \$1.25, and \$1.50.

## Duck Skirts, latest cut, made with

cluster of pleats down sides, full flare, in plain navy and butcher blue, also navy and white and black and white polka dots, extra values at \$1.00, \$1.25, and \$1.50.

## Duck Skirts, latest cut, made with

cluster of pleats down sides, full flare, in plain navy and butcher blue, also navy and white and black and white polka dots, extra values at \$1.00, \$1.25, and \$1.50.

## Duck Skirts, latest cut, made with

cluster of pleats down sides, full flare, in plain navy and butcher blue, also navy and white and black and white polka dots, extra values at \$1.00, \$1.25, and \$1.50.

## Duck Skirts, latest cut, made with

cluster of pleats down sides, full flare, in plain navy and butcher blue, also navy and white and black and white polka dots, extra values at \$1.00, \$1.25, and \$1.50.

## Duck Skirts, latest cut, made with

cluster of pleats down sides, full flare, in plain navy and butcher blue, also navy and white and black and white polka dots, extra values at \$1.00, \$1.25, and \$1.50.

## Duck Skirts, latest cut, made with

cluster of pleats down sides, full flare, in plain navy and butcher blue, also navy and white and black and white polka dots, extra values at \$1.00, \$1.25, and \$1.50.

## Duck Skirts, latest cut, made with

cluster of pleats down sides, full flare, in plain navy and butcher blue, also navy and white and black and white polka dots, extra values at \$1.00, \$1.25, and \$1.50.

## Duck Skirts, latest cut, made with

cluster of pleats down sides, full flare, in plain navy and butcher blue, also navy and white and black and white polka dots, extra values at \$1.00, \$1.25, and \$1.50.

## Duck Skirts, latest cut, made with

cluster of pleats down sides, full flare, in plain navy and butcher blue, also navy and white and black and white polka dots, extra values at \$1.00, \$1.25, and \$1.50.

## Duck Skirts, latest cut, made with

cluster of pleats down sides, full flare, in plain navy and butcher blue, also navy and white and black and white polka dots, extra values at \$1.00, \$1.25, and \$1.50.

## Duck Skirts, latest cut, made with

cluster of pleats down sides, full flare, in plain navy and butcher blue, also navy and white and black and white polka dots, extra values at \$1.00, \$1.25, and \$1.50.

## Duck Skirts, latest cut, made with

cluster of pleats down sides, full flare, in plain navy and butcher blue, also navy and white and black and white polka dots, extra values at \$1.00, \$1.25, and \$1.50.

## Duck Skirts, latest cut, made with

cluster of pleats down sides, full flare, in plain navy and butcher blue, also navy and white and black and white pol