

MR. A. P. COLEMAN,
SCHOOL OF SCIENCE,
TORONTO, ONT.

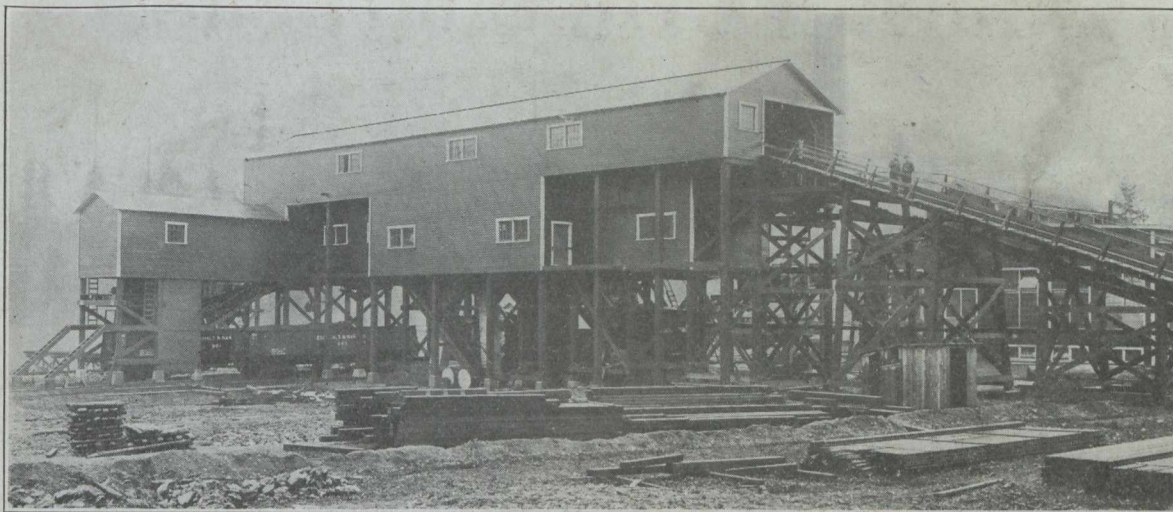
2

CANADIAN MINING JOURNAL

VOL. XL.

March 26th, 1919

No. 12



THE TIPPLE AT GRANBY'S NEW COAL MINE. CASSIDY, VANCOUVER ISLAND

"MARCUS" TIPPLE

"R and S" Coal Washery under contract at present time

GRANBY CONSOLIDATED MINING, SMELTING & POWER COMPANY, LTD. CASSIDY'S
SIDING, B. C.

TAYLOR ENGINEERING CO., LTD., ENGINEERS, VANCOUVER, B.C.

The rush of war work has passed. Coal Mining and Preparation Plants should be given careful study by experienced Engineers. Building mistakes are costly, difficult to rectify and become definite burdens.

In placing engineering and construction contracts for such work, the ability and resourcefulness of the Engineers and Contractors should be a controlling factor.

Coal Operators with development or improvement problems can profitably utilize our organization.

Write for Bulletin 19-J.

ROBERTS AND SCHAEFER CO.
ENGINEERS AND CONTRACTORS CHICAGO, U.S.A.