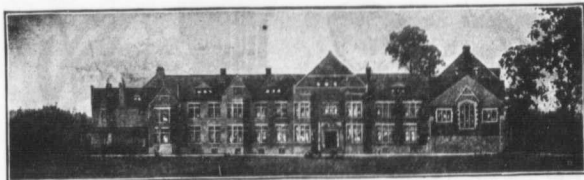


# St. Andrew's College

A Residential  
and Day School  
for Boys.

TORONTO



**SUMMER TERM  
COMMENCES**

**APRIL 10,  
1905**

NEW BUILDINGS NOW BEING ERECTED

The College authorities have purchased 23 acres in Rosedale, where new buildings are now in course of erection. They comprise an Upper and Lower School and will accommodate 300 boys.

The success of the College has continued. There are now 250 pupils in attendance.

Nine Masters in addition to the Principal in Residence.

Boys prepared for the Universities and Royal Military College.

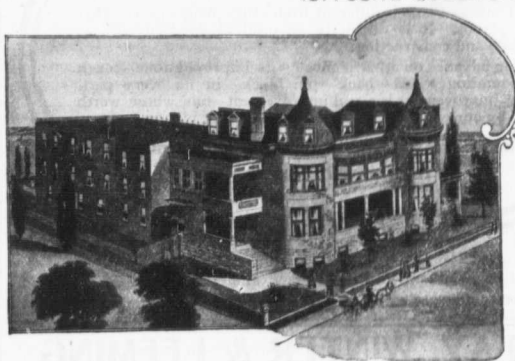
Upper and Lower Schools. Junior Residence.

Write for Calendar.

**REV. D. BRUCE MACDONALD, M.A., Principal**

# Toronto Presbyterian Ladies' College

(OPPOSITE QUEEN'S PARK)



BLOOR ST. WEST  
TORONTO

A HIGH-CLASS  
RESIDENTIAL AND  
DAY SCHOOL

A thorough training in all work for the Universities and for examinations in Music and Art. Affiliated with the Toronto Conservatory of Music. A Primary Department for junior pupils. Teachers of character and experience in every department.

FOR CALENDAR AND OTHER INFORMATION, WRITE  
**REV. A. R. GREGORY, B.A.,**  
PRINCIPAL

**MRS. A. R. GREGORY,**  
LADY PRINCIPAL

Please mention THE TEACHERS MONTHLY when writing to advertisers