

Why Goulds Sprayers Are Best



The bigger and better crop-producing qualities of good spraying are appreciated by all keen fruit men. Now the question is, "Which is the best Sprayer?" To spray thoroughly—to get every crack and crevice, leaf and limb uniformly sprayed—you need a sprayer that is practical, easy to use, does the work quickly, never gets "out of whack" and lasts a long time. All of these qualities are found only in a

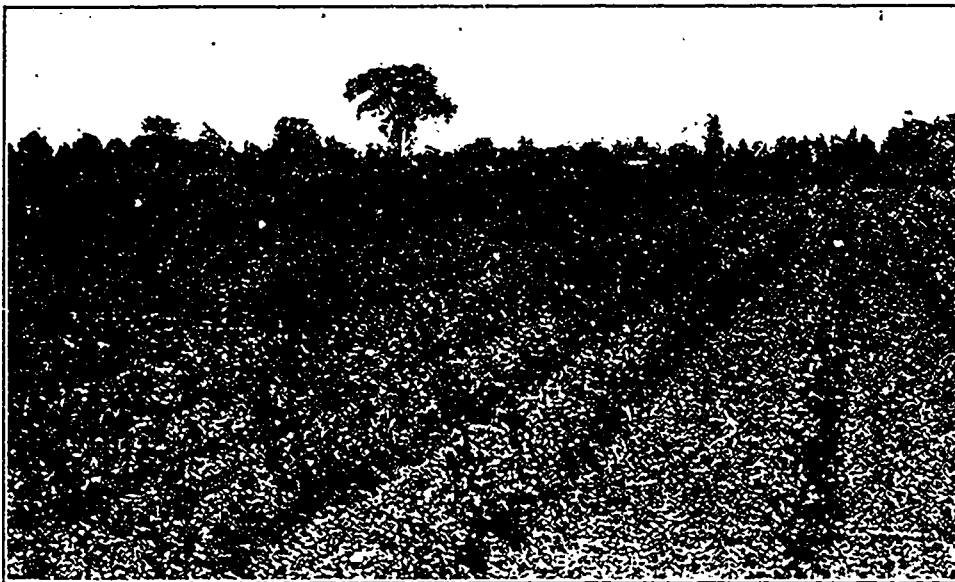
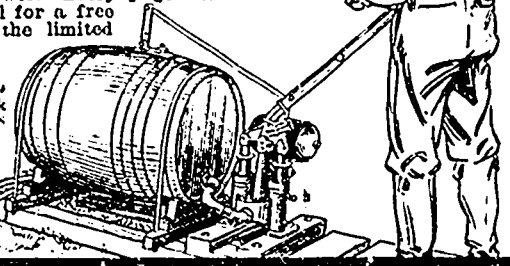
GOULD'S RELIABLE SPRAYER

Spraying the Goulds way is the result of years of "know how." The pump works easily, the nozzles spread the liquid all over the tree or plant without clogging, and the agitators in the barrel keep the solution well mixed. Spraying with a Goulds Reliable Sprayer is easy, quick work, and twice as effective as any other kind.

GET OUR FREE SPRAY BOOK

Our Book, "How to Spray—When to Spray—Which Sprayer to Use," contains a wealth of information for every fruit grower. Every page will interest you. Drop a postal for a free copy NOW—while the limited edition lasts.

THE GOULDS MFG. CO.
17 W. Fall St.,
Seneca Falls, New York
Largest Manufacturers
of Pumps for Every
Purpose.



CORNER OF CENTRAL NURSERIES

We ship direct to planter with good results. 53rd Year. If interested in Trees, Vines, Ornamentals, Shrubs, Roses, etc., send for our Free Illustrated Priced Catalog. It tells you about our Successful and Reliable Stock. **NO AGENTS**

A. G. HULL & SON, - ST. CATHARINES, ONT.



125-Egg Incubator and Brooder Both For \$13.75

If ordered together we send both machines for only \$13.75 and we pay all freight and duty charges to any R. R. station in Canada. We have branch warehouses in Winnipeg, Man. and Toronto, Ont. Orders shipped from nearest warehouse to your R. R. station. Hot water, double walls, dead-air space between, double glass doors, copper tanks and boilers, self-regulating. Nursery under egg tray. Especially adapted to Canadian climate. Incubator and Brooder shipped complete with thermometers, lamps, egg testers—ready to use when you get them. Five year guarantee—30 days trial. Incubators finished in natural colors showing the high grade California Redwood lumber used—not painted to cover inferior material. If you will compare our machines with others, we feel sure of your order. "Don't buy until you do this—you'll save money—it pays to investigate before you buy. Remember our price of \$13.75 is for both incubator and brooder and covers freight and duty charges. Send for FREE catalog today, or send in your order and save time.

FREIGHT AND DUTY PAID



Write us today. **WISCONSIN INCUBATOR CO., Box 237, Racine, Wis., U. S. A.**

STRAWBERRY PLANTS FOR SALE

Amanda, Paul Jones, Lea, King Edward, Charles L., Norwood, Arnout, Ekey, Mascot, Meteor, Twilley and all the old standards—Herbert Raspberry and Asparagus Plants.—Send for Price List

E. B. STEVENSON, "Maple Bank,"
270 Grange Street, - GUELPH, Ont.

Northern Grown Trees

Apple, Pear, Plum, Cherry, Peach, Grapes, Small Fruits, Ornamentals, Evergreens, Roses, Flowering Shrubs, Oilmbers, Etc. Everything in the Nursery line. Catalogue free. Send list of your wants for prices.

J. Wismer, Nurseryman,
Port Elgin, Ont.

Find The Canadian Horticulturist a Guide

Myrtle Dale, Wallington,
Surrey, England

Editor, The Canadian Horticulturist. I have pleasure in sending you one dollar to cover a two years' subscription for your most excellent journal, commencing with your Christmas number which I most particularly desire to possess.

For a long time now, I and others interested have been in the habit when visiting the City (that is London) of calling at one or the other of the Canadian offices with the object of looking over and as a rule picking out a few "tips" from your paper, practically unobtainable from local publications.

I may say that I have just returned from a five weeks' visit of inspection of various districts in Canada, taken with the object of transferring my family and one or two others in the early spring to your country. After spending some time visiting the well advertised districts, such as Niagara I finally fixed upon Bleinheim, Essex County, Ontario, which to my mind offers greater advantages than anywhere else visited, including British Columbia.

With best wishes for the continued success of The Canadian Horticulturist.

Yours faithfully,
James Wilson.

Pronunciation of Plant Names

The following pronunciations of common plant names have been adopted by both the Ontario and Canadian Horticultural Associations. They discard many that are commonly used, and are of interest to all lovers of flowers:

Agave: a-gá-ve (a in second syllable as in art), not ag'-ave.

Aloe: al'-o-é, not al'o.

Arbutus: ar'bút-us, not ar-bút'-us

Aristolochia: ár-is-tol-ó-ki-a, not ár-is-tol-ó-chi-a.

Clematis: klem'-á-tis, not klem'-tis nor klem'-tis

Cyclamen: sík'-la-men, not sí-klá-men.

Cyperus: sí-pé-rus, not sí'-per-us.

Dahlia: dahl'-i-a (a in first syllable as in art), not dáy-le-a.

Deutzia: dóit-zi-a, not doot-zi-a.

Edelweiss: á'-del-vis, not idle-wise.

Galadivus: glád'-i-ó-lus, not glád'-i-ó-lus nor glád'-i-ó-lus.

Gypsophila: gip-soft'-il-a, not gip-soft'-il-a.

Hemerocallis: hé-mer-o-kal'-lis, not hé-mer-o-kal'-lis.

Hydrangea: hi-dran'-jé-a (a in second syllable as in arise), not hi-drán'-jé-a, nor hí-de'-a-range.

Knapweed: ní-fó'-fi-a, not ní-fó'-fi-a.

Kochia: kók'-i-a, not kó'sh-a.

Lonicera: lon-i-sér'-a, not lon-i-ér'-a.

Nephrolepis: né-fro-lép'-is, not né-fro-lép'-is.

Oenothera: é-no-thé'-ra, not é-no-thé'-ra.

Papaver: pap'-á-ver, not pap'-á-ver.

Scabiosa: ská-bi-ó-sa, not skái-ó-sa.

Schizanthus: skiz-an'-thus, not skiz-an'-thus.

Vase: váze, not vanz, váce, né-váz.

Viola: ví'-ó-la, not ví-ól'-a.

Weigelia: ví-, or wi-gé'-li-a, not wí-gé'-li-a.