

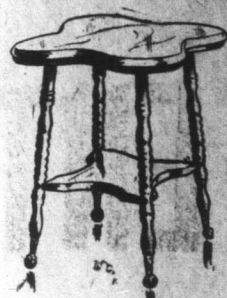
An Object Lesson in Furniture!

Our Furniture Department—An Eloquent Lecture on Economy.

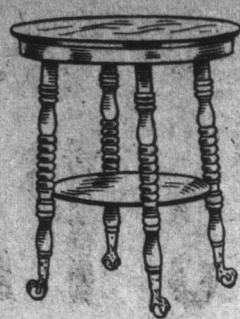
For many years past it has been a fact that BEAUTIFUL Furniture could only be purchased by the comparatively rich, but a stroll through our Furniture Department will speedily convince you that this state of affairs no longer exists.

We have BEAUTIFUL FURNITURE, and at prices that will bear the closest comparison. You are bound to find what you want here, and you will be pleasantly surprised at the savings we enable you to make.

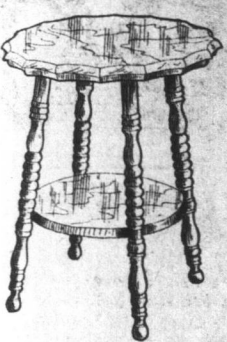
Our bed and bedding section is the most complete, and offers a wide range of choice at ROYAL PRICES. We specially recommend the Ostermoor Mattress, which is recognized the finest in the world, and guaranteed for 25 years. The most comfortable and hygienic Mattress made; and an investment that will bring you a lifetime of comfort.



Birch Tables, Mahogany polished, shaped top. Size 24 x 24 inches. Brass claw feet. Height 28 inches. Price \$4.00.



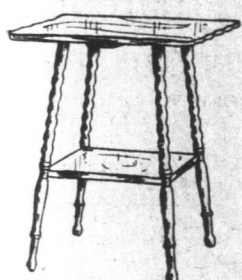
Quarter Cut Oak Tables, golden polished. Brass claw feet. Size of top 26 inches diameter. Height 28 inches. Price \$8.00.



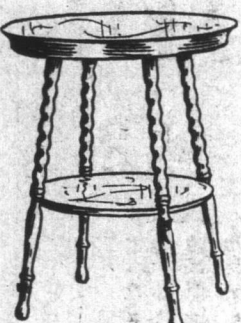
Birch Tables, Mahogany polished, size of top 24 inches diameter. Price \$5.75.



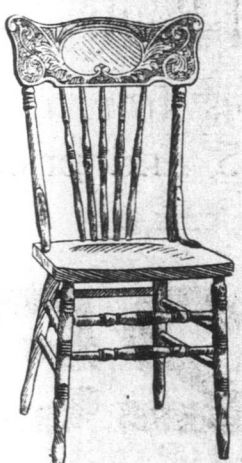
Quartered Cut Oak Tables, golden finished, polished top, size 24 x 24 inches. Brass claw feet, with glass tops. Price \$6.75.



Oak Tables, golden gloss finish. Size 24 x 24 inches. Height 28 inches. Price \$4.25.



Birch Tables, Mahogany polished. Top is 24 inches in diameter. Height 28 inches. Price \$5.75.



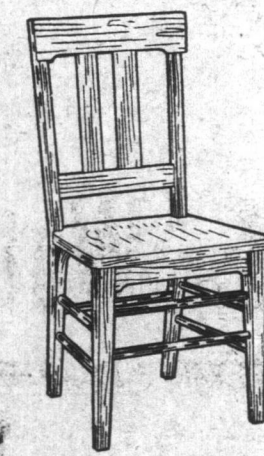
Elm Chairs, golden gloss finish. Wood Seat. Price \$1.65.



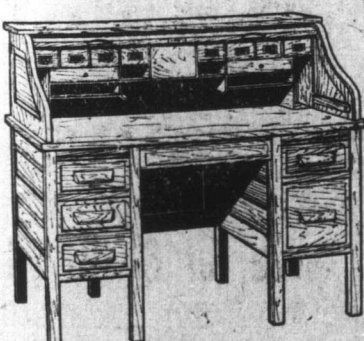
Early English finish Chairs, Wood Seat. Price \$4.75.



Royal Oak Rockers, gloss finish, Saddle Wood Seat. Price \$7.20.



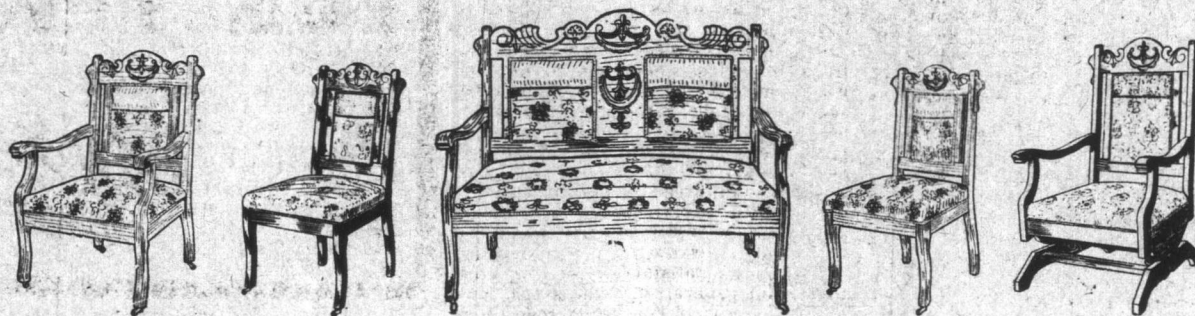
Early English finish Chairs, Wood Seat. Price \$3.75.



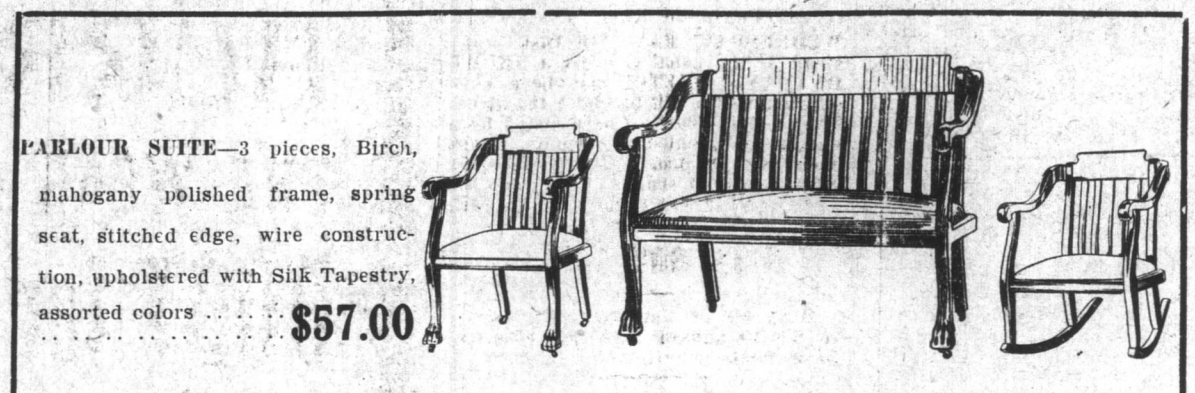
Sanitary Construction, selected Quarter Cut Oak Desks, with golden wax or early English finish. Writing bed 5 ply built up stock. Drawer fronts solid Quarter Cut Oak. Long sliding leaf over each pedestal. Raised drawer fronts. Roll top. Closes all drawers automatically. 45 inches high, 30 inches deep, 52 inches wide. Price \$55.00.



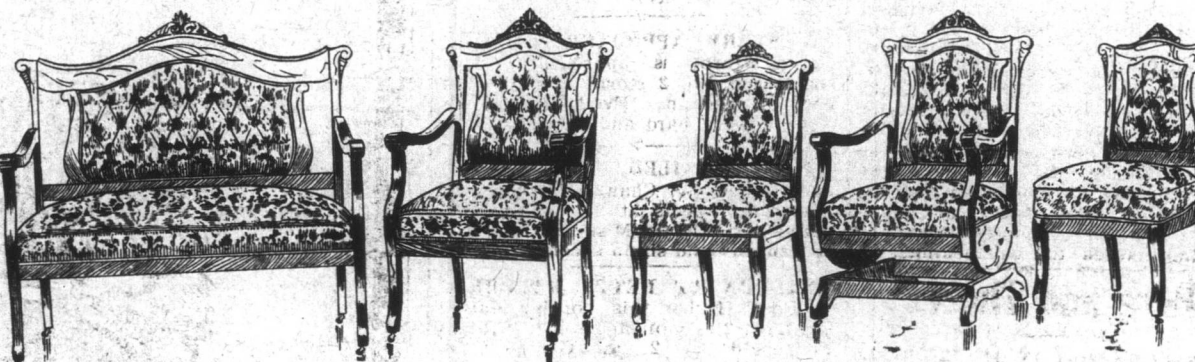
Royal Oak Rockers, gloss finish, Saddle Wood Seat. Price \$6.55.



PARLOUR SUITE—5 pieces, Birch, Mahogany and Walnut Frames, Gloss finish, Spring Seat, hard edge, webbed bottom, upholstered with Figured Velour \$34.00



PARLOUR SUITE—3 pieces, Birch, mahogany polished frame, spring seat, stitched edge, wire construction, upholstered with Silk Tapestry, assorted colors \$57.00



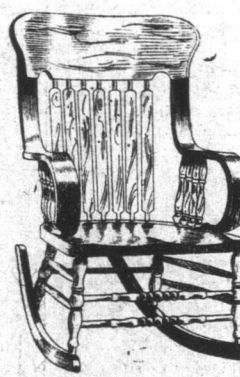
PARLOUR SUITE—5 pieces, Birch, Mahogany Frame, hand carved and polished, spring edge and buttoned front and back, upholstered with cut Plush..... \$70.00



No. 1 Royal Oak Rocker, Gloss finish wood, Saddle Seat. Price \$6.50.



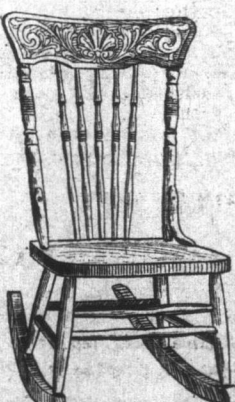
No. 2 Rocker, gloss finish, patent Roll Seat. Price \$9.50.



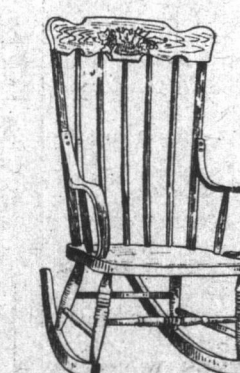
No. 3 Rocker, Golden Gloss finish, Royal Seat, Wood Seat, Saddle. Price \$8.75.



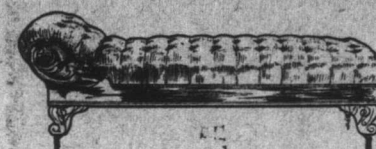
No. 4 Golden Oak Rocker, gloss finish, Saddle Seat. Price \$4.20.



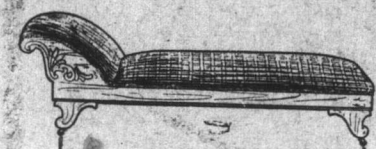
No. 5 Elm Wood Rocker, Golden Gloss finish, Wood Seat. Price \$1.75.



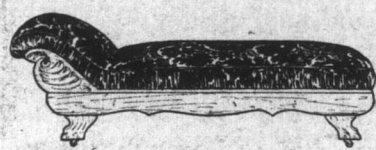
No. 6 Elm Rocker, Golden Oak Gloss finish, Wood Seat. Price \$2.45.



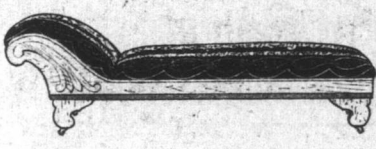
Plain selected Oak Couch, Golden Gloss finish, Spring Edge Seat, deep tufted, 25 ins. deep and 74 ins. long. Cut Plush covering. Price \$31.00.



Elm Couch, Golden Gloss finish, spring seat and head, hard edge wood bottom, 24 inches wide, 24 inches deep, and 72 inches long. Velvet covering, assorted colors. Price \$13.25.



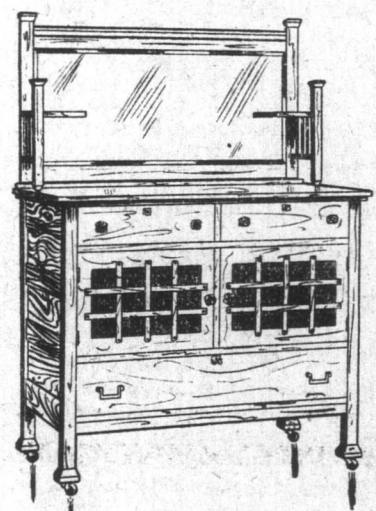
Selected Quarter Cut Oak Couch, Golden Gloss finish, spring edge seat, ruffle band, 27 ins. deep and 74 ins. long. Cut Plush covering. Price \$39.00.



Hardwood Couch, Golden Oak finish, spring seat and head, hard edge, wood bottom, 23 1/2 ins. high, 24 ins. wide and 72 ins. long. Velvet covering. Price \$14.50.



Sideboard, made of choice selected Quarter Cut Golden Oak, with brilliant finish, and X L Mirror. Size 18 x 40 inches; height, 71 inches; length, 48 inches; depth, 22 inches. Price \$59.00.



BUFFET—Royal Oak, early English finish, run easy drawer construction, Mirror, size 18 x 40 ins. Height, 60 ins.; width, 45 ins.; depth, 23 1/2 ins. Glass doors in front. Price \$50.00.



Elm Desks, with Golden Gloss finish, long sliding leaf over each pedestal, closing of top locks pedestal drawers automatically. Book cupboard on right, fitted with self pigeon holes. Full complement of pigeon holes. Price \$35.25.

Maddened Bull Creates Havoc.

About 4 p.m. yesterday a large and vicious bull was landed from the Emma E. Whidden at Pitts' premises, and from the time it left the steamer, the wharf it gave trouble. In fact while on the voyage down from Port Mulgrave the crew had to be careful in going near the animal, which tried to gore them, and for a while the intention was to kill it. Extra care was taken in landing the beast, but when being taken into the shed, on the wharf he broke away from the men and dashed up Water Street at a great rattling pace, scattering people in all directions with head down as he repeatedly charged in on the sidewalks. People had to take refuge in shops along the way to escape him, and opposite Steer Bros, he charged full tilt at a man who was coming towards him at a rapid rate on a bike. The rider of the machine jumped off and dodging behind a telegraph pole saved himself from death, while Taurus tossed the bike high in the air and again charged in the street with impunity. Men, women and children had to seek cover in all directions, and near T. Walsh's store a little boy barely escaped being gored but that a man grasped the child in his arms and rushed into a store just as the bull with head lowered passed the spot where both were an instant before. The beast then kept on his maddened career in Waterford Road, up through the West End, followed by a crowd of men from Pitts' with several of Mr. C. Lester's men, and from 1 to 6 p.m. the animal had charge of that thoroughfare. Repeatedly the men tried to capture the beast, but every attempt was a failure, as it charged them every few moments and scattered them in all directions, several barely escaping his horns. Mr. Colshaw drove along in his auto at 6 p.m., and when near the General Protestant Cemetery the bull, bellowing loudly, charged down on the "E. M. P." It withstood the shock well, but the front of the car was wrecked and the lamps were broken, though Mr. Colshaw fortunately escaped personal injury. The bull then turned into "Germondale" and destroyed 200 worth of property, tearing up fruit trees of all kinds, smashing hot beds and compelling the caretaker repeatedly to fly for his life, as it charged him. Before dark hundreds of people collected on the road. Taurus still held the fort and not till near midnight was he disposed of. The men who were trying to round up the brute had to come to the city and get guns during the night, but the difficulty then was to get a shot at the animal. As he charged several shots were fired at him, without avail, but just before midnight two bullets took effect. They wounded the bull but not mortally, and bellowing with pain he repeatedly rushed in and out the road. Eventually Messrs. Tessler and Johnson drew a head on him and brought him to the ground, when Mr. Walt Butler gave him his final blow with an axe. The men and hide will not go near paying what damage the bull did.

Mr. Myler's Job.

Mr. W. M. Myler, of the West End, has been a consistent supporter of the Tory Party for some years past, and at one time contested St. John's West in the interests of the party, being defeated of course. Mr. Myler, who is a straightforward and right citizen, deserved well at the hands of the Picnic Party and should have received a position commensurate with his services to the party. Of late the plums seem to be falling into the laps of outsiders, importations from any old place being given good jobs. Mr. Myler, however, is a representative Newfoundland, whose father and grandfather took no insignificant part in the building up of this country. He has, we learn, been promised "something" by Premier Morris and has been given the very lucrative position by the "Split" Government of a Customs supernumerary, which provides anything but constant work. Mr. Myler and his friends must certainly be thankful for this evidence of gratitude and fair play on the part of the Tory crowd.

Indigestion & Dyspepsia

In all its forms can be cured. It is quite a daily occurrence to hear persons say: Oh, what a feeling of distress I have after meals, fullness of the stomach, heaviness and headache, I feel too tired to do anything. I have no heart to exert myself and at times I care for nothing. I often have a pain in the pit of my stomach, no appetite, my heart beats rapidly on the slightest exertion. I feel just as tired when rising in the morning as when retiring to bed. My sleep is often disturbed, and I often awake with a sense of suffocation and a difficulty of again going to sleep. I have to be careful of what I eat, and my life seems a veritable burden. Now, it seems a shame and a pity to see persons to be suffering like that when it is in their power to get cured by taking a Bottle of Dr. Stafford's Prescription A. A sure cure for persons afflicted with stomach troubles. It can be obtained at

DR. F. STAFFORD & SON, Duckworth Street and Theatre Hill. Small size, 25 cents; postage, 5c. extra; large size, 50 cents; postage, 10c. extra. Mail orders must be accompanied by remittance.—Oct 29, 1911.

A Good Icebreaker.

The S. S. Tritonia which arrived at Botwood from London a few weeks ago to take a load of pulpwood sailed today with a full cargo. She proved herself to be a first-class icebreaker, and cut through the standing ice in Green Bay without being stopped.

A DANGER TO PEOPLE.—A crowd of unruly boys nightly frequent McNeil Street and act in a very disorderly manner. Of late their practice is to get lines and wires and stretch across the street tripping people up as they pass. The place is badly lit at night and old people especially passing there are liable to be seriously injured.

THE ROYAL STORES LIMITED

All Mail Orders Promptly and Carefully Filled.