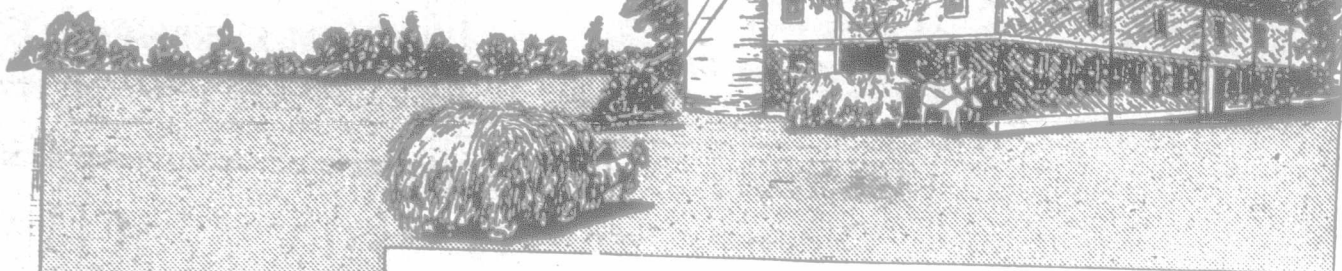


LOUDEN

Hay Tools
Mean Quick Work
—Less Help



You can Always Depend on a Full Day's Work
—With More Hay in the Mow when Night Comes

BECAUSE

Louden Hay Tools handle tremendous loads rapidly, are simple and strong, efficient in unskilled hands, free from complicated trouble-making parts, no kinking ropes, no delays or running to town to repair broken parts.

It makes no difference what kind of hay you have, upland hay, dry, short clover or alfalfa, pea vine, prairie wool, threshed short straw, or corn or grain sheaves—Louden Tools handle them all perfectly and safely.

Loads are carried right up to the track close to the peak of the roof—permits storing tons more hay in the same space—dropped exactly where you want it—saves half the labor in mowing back and saves all the backaches.

The superiority of Louden Tools is recognized by practical farmers who investigate—One of our customers writes us:—

"Our power hoists, slings, forks, carriers, track and pulleys are all Louden Hay Tools. Goods of other makes were all replaced because we found Louden goods more reliable and convenient."

Send us the length of your barn—whether you unload from the end or from centre drive, and width space between your rafters. Your local dealer will gladly quote you on Louden Equipment or we will direct.

If you are building or remodeling, our 112-page Barn Plan Book (not a catalogue) will save you worry, time and money. Write for it, also our large illustrated catalogues giving full descriptions. We mail them free.

LOUDEN MACHINERY COMPANY OF CANADA, LIMITED

Head Office and Factory: 573 CRIMEA ST., GUELPH, ONT.

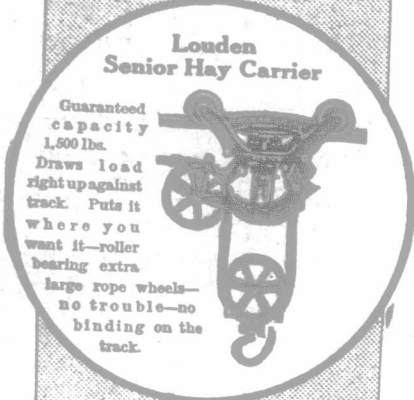
Branches with complete stocks:
 Martin Ave., Winnipeg, Man. Pender St. West, Vancouver, B.C. St. John, N.B.
 Edmonton, Alta., Alberta Dairy Supplies, Ltd.
 Tear Off Coupon Now and Mail Us To-day.

The Louden Machinery Co. of Canada, Ltd.
 573 Crimea St., Guelph, Ont.

My barn is.....ft. long, rafters are spaced.....ft.....inches apart, we unload from..... I prefer to use.....(state whether Grapple or Harpoon Fork or Slings). Please send me free, postpaid, your large illustrated books, marked below:

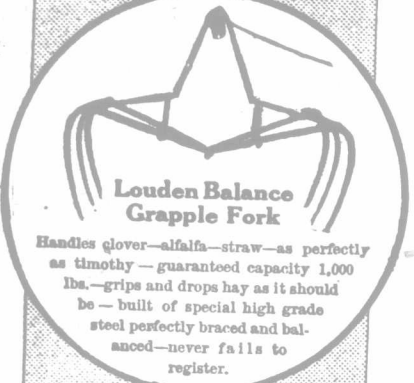
...Barn Plan Book. ...Water Bowls.
 ...Hay Tools. ...Horse Stable Fittings.
 ...Grapple Hay Forks. ...Barn Door Hangers.
 ...Feed and Litter Carriers. ...Garage Door Hangers.
 ...Stalls and Stanchions.

I expect to build new barns size.....x..... in month of..... I expect to remodel barns size.....x..... in the month of..... I expect to equip present barns in month of..... I keep..... Cows..... Horses..... Calves..... I prefer to deal through..... My Name..... P.O..... Prov.....



Louden Senior Hay Carrier

Guaranteed capacity 1,500 lbs.
 Draws load right up against track. Puts it where you want it—roller bearing extra large rope wheels—no trouble—no binding on the track.



Louden Balance Grapple Fork

Handles clover—alfalfa—straw—as perfectly as timothy—guaranteed capacity 1,000 lbs.—grips and drops hay as it should be—built of special high grade steel perfectly braced and balanced—never fails to register.



Louden Power Hoist

So simple a boy can operate it. All slack rope wound on drum—no wear on ropes.
 For use with 4 h.p. and upwards
 Elevates load—draws it into the mow—pulls back empty carrier for next load.

Cream of the West Flour

—the hard wheat flour that is guaranteed for bread



The high gluten flour prized for splendid big loaves of delicious, nourishing bread. Ask for it at your dealer's.

The Campbell Flour Mills Company, Limited, West Toronto

Caring for the School Garden During Vacation.

BY J. B. DANDENO, INSPECTOR OF ELM. AGR. CLASSES.

The management of the school garden during the summer vacation will require considerable forethought, especially where the teacher's home is at some distance from the school section. Adequate provision for such care as may be required should be made by the teacher before the close of the school in June. The following suggestions may prove useful:

(a) The management may be undertaken by the School Progress Club; (b) Each of the classes of forms III and IV could take charge in alternate weeks, by visiting the gardens at least once, and doing such work as might be necessary;

(c) Each individual might be held responsible for his or her plot; (d) Some man or woman in the section might be asked to visit the garden at stated times (four or five times during vacation), when the pupils would be there by arrangement, for an hour or two, to do the necessary work, these days being made attractive by having some games or sports after the garden work; (e) Arrangements might be made with some responsible person to have the necessary work done and paid for (to this method there are many objections); (f) By far the best method for summer management is to have the teacher himself visit the school with the pupils, see that the work is done, give such explanations as may be useful while on the ground, and have games and sports as part of the program; this method, however, is feasible only when the teacher lives in the section or near it.

Save by Painting.

During the past four years every attention has been directed to the winning of the war, and so great has the demand been for both men and provisions that little more than work of the most urgent need could be carried on on the average farm. Now that conditions are changing it might be well for the average property owner to pay a little attention to the fixing up of his surroundings. It is surprising the effect which paint has on the buildings; not only does it improve the appearance, but it protects both wood and iron from the ravages of the elements. True, paint is rather high in price as yet, but so are all kinds of building materials. Consequently, it will not pay to minimize on the one hand and permit deterioration to go on on the other. Paint not only conserves but enhances the property value. While deterioration and decay of buildings go on very slowly, the work is nevertheless sure, and undoubtedly hundreds of thousands of dollars should be written off building values every year, as depreciation. Some authorities contend that the losses ensuing through lack of paint are greater than the losses sustained by fire. Woodwork about the house is painted to protect the surface from deterioration; paint will have the same effect on the barn and out-buildings. By coating the surface with paint, which contains a large quantity of oil, the pores of the wood are unable to absorb the moisture which starts decay, and on metal rust cannot gain a hold where the surface is painted. Aside from the improvement in appearance, it undoubtedly pays to paint the buildings from the standpoint of preservation.

The teacher and pupils will do well to study and practice methods of causing plants to develop a deep root system, so that watering during the summer may not be necessary. This success of this depends largely on the preparation of the seed-bed or plot and the subsequent watering which should be avoided. Watering plants after they have started usually causes a shallow root-system. Some garden truck is better planted in shallow grooves or trenches which are gradually filled in as the plants grow to, give a deep root-system. Of course, these suggestions must be modified according to the soil, the seed-bed, and the season.

JUNE 26, 1919

SUFFOLK

Leiston Blue John 1916; Sire Darshan (4749), by Toller young horse, a typical 1,700 lbs., deep and excellent feet and inches below the true straight action by English Board 1919. His pedigree Suffolk. Through back to Crisp not a five year old stallion. Owner can with confidence this stallion in even without a fault. Expenses to any Canada in charge. For further particulars SKIDMORE RIXLAD

Cable Address, ASHBY, WA

WA

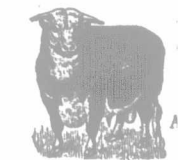
Horses by TH bred Stallion under 15.3 Weighing 1,250. sloping

Box 8, Farm

GUE FOR

Our stock is rich the "Chene" at Choice animals B. P. HIL Great

SUNNY



Alloway ANGUS.

A choice lot of Edward. Col ROBT. ME

Abercrombie

Alonzo Matt Manager

SU ABER

The present str some classy he selves and sire Angus, write yo G. C. CHANN

Railway connect

Springf

I have six bulls Middlebrook F cairns. Four have other calves heifers safely b KE

Bellwood R. R. No. 5, B

Kennelworth all are sired by are ready for so PETER A. T

AN

We have for sa service. Also J. Aberdeen Far

PATEL

Fetherstonha firm. Patent Bank Building Eign St. Off let free.