

FENNINGS' For children cutting their teeth, prevent convulsions, are Cooling and Soothing.

CONTAIN NOTHING INJURIOUS TO A TENDER BABE

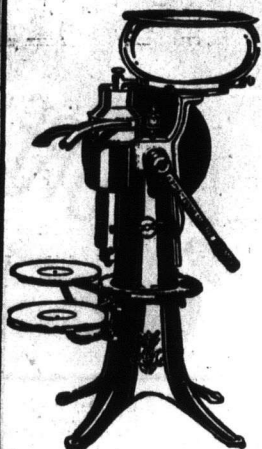
Safe Teething **CHILDREN'S** Easy Teething

Sold in stamped boxes at 50c. per package, with full directions, by the National Drug and Chemical Co. of Canada, Montreal. (Branches in all parts.) (Alone have the trade mark, "A Baby in a Cradle.")

Read "Fennings' Every Mother's Book." A Free Copy will be sent Post Free on application to Alfred Fennings, Cowes, Isle of Wight, Eng.

POWDERS

A Cream Separator that Gets All The Cream

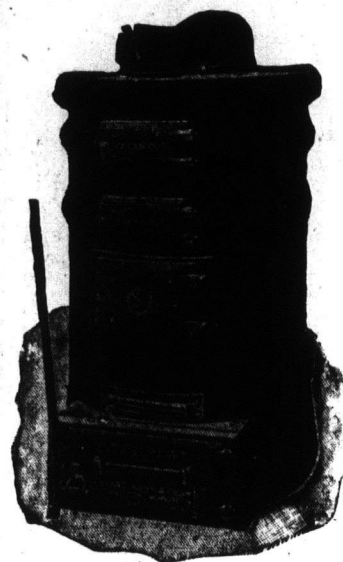


We aim to have the best Separator regardless of cost and to supply our customers at prices which are the lowest safe margin over the actual shop cost, and by avoiding all the expenses of branch stores, salesmen and agents we can make a big saving for every buyer, as a comparison of our prices with others will prove. Send a postal card to-day for catalog giving full particulars.

250 lb. capacity	\$38.50
375 lb. capacity	48.50
600 lb. capacity	57.50
800 lb. capacity	65.00

C.S. JUDSON CO. Ltd. WINNIPEG Canada

No Cold Bedrooms With This Heating System Installed

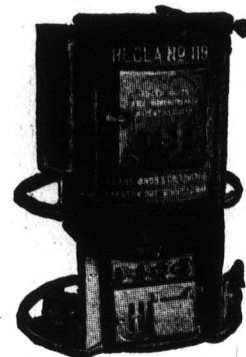


No undressing or getting up in chilly temperatures—EVERY room in the house evenly and steadily heated at all hours of the day and night.

Imperial Hot Water Boiler and Hydro-Thermic (Steel) Radiation

combine the latest, most improved type of Boiler with the most advanced system of Radiation yet known. Imperial Boilers fully guaranteed as to material and workmanship. Hydro-Thermic (Steel) Radiators pressed from rust-resisting steel alloy, twice as light and compact as cast iron radiators, fully as strong; require less water in circulation, hence respond more quickly to regulation—and many other advantages fully explained in special booklet. Write for it TO-DAY.

It is unnecessary to have running water for this efficient and economical system because once Imperial Boilers are filled, the addition of a pail of water at long intervals will keep it running.



"Hecla" Warm Air Furnace

The furnace that saves you one ton of coal in seven—a furnace with such advantages as the Steel-Ribbed Fire Box, giving you three times the heat radiation as other equal-sized fire boxes; the Cast Iron Combustion Chamber, which won't burn through; the Circular Water Pan, which spreads the moisture uniformly to every room; the Patent Fused Joints, which prevent gas and smoke leakage, etc., etc. Write for booklet "Comfort and Health"—a sane treatise of right house heating.

Check off System you are most interested in, fill in and mail this coupon TO-DAY.

Clare Bros. Western Ltd.

DEPT. H, WINNIPEG, MANITOBA

COUPON

Clare Brothers Western Limited, Dept. H, Winnipeg, Manitoba. Please send me information regarding the HECLA WARM AIR FURNACE or the IMPERIAL HOT WATER BOILER and HYDRO-THERMIC (Steel) RADIATION.

Name Address

When writing advertisers, please mention The Western Home Monthly

Plans and Specifications

Drawn for The Western Home Monthly by V. W. Horwood

Here we have a modern rural home of moderate cost. To the man who is willing to give the housing of his family consideration, this will be an interesting plan.

The main entrance is on one side, and there is a most comfortably arranged

Fighting House Plants' Enemies

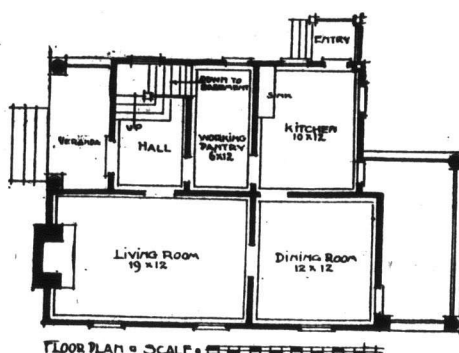
By Dell Grattan

The house plants that do so much to brighten our shut-in days of winter have each their special enemy, and guarding against these is one of the chief difficulties in our indoor gardening. Various baths, dustings and smokings must be resorted to. For the baths, tobacco water is invaluable, made thus: pour a gallon of boiling water upon a pound of tobacco stems, let stand a day, keeping warm, strain and use. To give a plant a plunge bath add enough of the tobacco water to color the water to be used. This is very effective where insects are to be destroyed.

Smudges to destroy insect pests are made thus: Put a few slivers of wood or a few matches crossed in a small flat tin, cover with pyrethrum powder, tobacco dust, cut-up stalks, or flour of sulphur, mixed with fine damp sawdust. Light, see that there is not too much blaze, and set beneath the infested plants; but be sure the smudge is not big enough to give out a scalding heat; better use two or three small ones if heavy smoke is required.

The special enemies of palms, red rust and brown scale, need to be washed off with strong carbolic soapsuds and a soft brush before bathing and smoking.

The worst among the insect pests are plant lice, mealy bugs, white and black

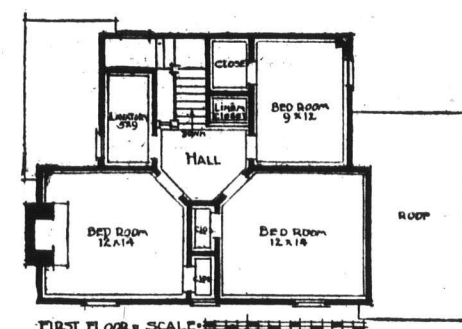


living-room with old fashioned brick fireplace, and two windows. The dining-room is also on the front. No day is so bleak or cold but these rooms will have a cheery atmosphere. There is a verandah with access to both dining-room and kitchen. There is a smaller verandah at the entrance. Every year we see a greater tendency on the part of the people to inclose their porches for winter use. The one off the dining-room would be admirable for sun room purposes.



The kitchen is 10 ft. by 12 ft. and if a separate working pantry is not desired, the kitchen may be left 16 ft. by 12 ft. and have built-in cupboards and bins.

The upstairs rooms are well provided with ample closets. The owner's room has a home-like fireplace—just the thing for spring and the first cool days of fall, when it doesn't seem worth while to have the furnace going. An ash flue running to the basement will be a convenience when cleaning. There is a linen closet conveniently placed, and a lavatory is at the head of the stairs.



This house is planned to withstand our northwestern winters, and should have a well installed heating plant, either hot air or hot water.

The construction is frame, with a stone or concrete basement. The siding should be painted white and roof green. Windows with small panes will give an added quaintness, and the chimney would be best built of red bricks.

flies, red spider, and the various scales. Soap and water, smoke, and endless watchfulness will keep them well, but every new plant that comes to you from a greenhouse or hothouse must be suspected. Do not set it among other plants that are clean and in good condition for at least ten days, and then only after a thorough bath. If a plant is badly infested with insects it had better be thrown away quickly.

Tiny flies, black or white, are hard to overcome, as the least touch on the pot or plant sets them flying. To treat a plant infested thus, set it apart, with a stick higher than itself set into the earth by it; throw a thin cloth over this, letting it reach the ground all around, then slip under it a lighted smudge, and turn down over all this either a box or barrel with paper pasted over the cracks. After this has stood for two hours, plunge the plant into a tepid bath, keeping the cloth on until well under the water, in order to hold in any flies that may be left living. Splash the plant well, drain, and while damp, dust with either insect powder or finely crumbled tobacco, putting it on to both sides of the leaves.

For plant lice spray thickly with strong tobacco water, leave an hour, then bathe, and dust with more tobacco. A little flour of sulphur mixed with the tobacco makes the treatment more effective, bathe in carbolic soapsuds next, and follow this with a shower of clear, tepid water. Another pest is the red spider which is invisible until it appears as small blotches upon the foliage.