

Cigaret Cases at \$4.29
Sterling silver, English hallmark-
ed, will hold cigars on both sides,
outside of case hand engraved. Regu-
larly \$5.00. Thursday 4.29

THE ROBERT SIMPSON COMPANY LIMITED

Steamer Trunks
Waterproof canvas covered, hardwood
slats; sheet iron bottom, outside straps,
heavy corner bumpers, divided tray, size
22 in., 34 in., 36 in. and 40 in. Regular
\$6.00 to \$7.50. All sizes Thursday . . . 4.29
Phone orders filled.

SHOP HERE TODAY TO YOUR PROFIT

Home Needs Liberally Priced for Today

THE NEW LINOLEUMS.

Thousands of yards of new Linoleum have been added to our stock. The selection is largest now, before the spring selling has depleted the range. The quality and patterns are right up to the standard.

INLAID LINOLEUMS, \$1.00, \$1.25 AND \$1.45.

Great variety of carpet, tile, hardwood and bathroom designs, for dining-rooms, kitchens, offices and public buildings; the variety was never greater; all new and perfect goods. Thursday, square yard 1.00, 1.25 and 1.45

NEW PRINTED LINOLEUMS, 50c.

Hundreds of rolls in a great variety of block, tile, floral, matting and hardwood effects; 2 yards wide, square yard, .50; 4 yards wide, square yard 55

HEAVY QUALITY FLOOR CLOTH, 32c.

Good, bright, clean-looking matting, floral, block, tile and hardwood designs, for bathrooms, kitchens and bedrooms; 36, 45, 54 and 72-inch widths. Thursday, square yard 32

JUTE RUGS LOW PRICED.

Closely woven, reversible, in two-tone brown or a tan and green Oriental design; good rugs for bedrooms; size 7.6 x 9.0, 3.00; 9.0 x 9.0, 3.55; 9.0 x 12.0 4.95

New Curtains for the Windows

The most interesting of the new arrivals is a line of unusually pretty Marquissette Curtains.

MARQUISSETTE CURTAINS, PAIR, \$2.25.

An exceptionally dainty curtain, 2 1/2 yards long, in ivory, white or ecru; hemstitched edge with lace.

MARQUISSETTE CURTAINS, PAIR, \$3.75.

Made of strong marquissette, in soft shades of ivory, ecru or white, 2 1/2 yards long, trimmed with lace and insertion.

MARQUISSETTE CURTAINS AT, PAIR, \$5.50 AND \$6.75.

For living-room or dining-room windows, 2 1/2 yards long, extra strong quality, rich laces and insertions, pair 5.50 and 6.75

NEW CURTAIN RODS.

Made for hanging scrim curtains, in well-finished flat brass, unpolished, curved end bracket, extending from 25 to 40 inches, .30; extending from 33 to 58 inches, .40. Rod to fit almost any size of bay window, set 1.00

ENGLISH VELVET, YARD, \$1.25.

Another arrival of special interest is a shipment of English velvets, in soft shades of green, brown or rose; 50 inches wide, with rich lustrous finish. Yard 1.25

Special Prices for Wall Papers

Embossed and Gold Wall Papers, 30 designs, Regular 20c. Thursday, roll 6 1/2

English Wall Papers, tapestries and conventional patterns. Regular 35c and 50c. Thursday, roll 1.1

Silk Fibres, 22 inches wide, durable plain paper. Regular 50c. Thursday, roll 1.8

CLEARANCE OF CUT-OUT AND SCENIC BORDERS.

Bandings and strappings, range of widths and colorings. Regular 8c to 50c yard. Thursday at 1 1/2

White and Cream Moire Ceiling Paper.

Thursday, roll 5

Bathroom Specials

Glass Shelves, 5 x 18 or 24 inches, with nickel-plated brass brackets and screws. Regular \$1.25, Thursday 98
Glass Towel Bars, 1-inch diameter, 18, 24, 30 or 36 inches long, with cast brass nickel-plated posts. Regular \$2.25 to \$2.75, Thursday 1.49
Tumbler and Soap Dish Combination, Thursday 98
Sponge and Soap Combination,

for bath tubs. Regular \$1.75, Thursday 1.25
Mirrors, size 10 x 14, plate glass mirror with white enamel frames, Thursday 98
Toilet Paper Holders, Bath Tub Soap Dishes, Wall Soap Dishes, Tumbler Holders, Towel Bars. Regular 75c to \$1.00, Thursday 59
Robe Hooks, nickel-plated cast brass; Round Soap Dishes, Tooth Brush Holders. Regular 25c. Thursday, each 15

Soldiers' Cameras

Ensignette Vest Pocket Camera, with Meniscus lens, in case; very strongly made 7.50
Ensignette Camera, fitted with anastigmat lens, F.8, will take snaps in dull weather 22.50
Ensignette No. 2, with Meniscus lens, taking pictures 2 x 3, in case. Thursday 10.00
Films for Above Cameras, No. 1, 15; No. 2 20

NEWS FOR WOMEN

with special reference to new models and some exceptional values.

Women's Suits at \$10, \$15 and \$20

At \$10.00—Pure wool serge, three styles, in black, brown, navy and Copen., well tailored, good serviceable linings; plain tailored or belted styles; some braid trimmed.

At \$15.00—English pure wool serge or twills, fifteen tailored styles, in Russian, pleated, flaring peplum or belted styles, some with silk taffeta bands; skirts full flared or pleated.

At \$20.00—Wonderful array of smart suits, in serges, gabardines, poplins and checks, showing all the newest styles and touches; shades are sand, brown, greens, checks, black, navy and Joffre blue. Other New Spring Suits 25.00 to 65.00

TOP COATS FOR WOMEN'S SPRING WEAR.

Novelty Coats, in fancy stripes, checks, coverts, two-tone velvet, corduroy, waterfall silk, gabardines and serges; advanced styles in sports, slip-on, motor, or for dressy wear; colors are rose, gold, black and white, brown and white, Joffre, brown, navy or black 8.95 to 25.00

Silk Flounce Petticoats at \$2.50

Black only, body is made of "Heatherbloom," tailored sectional flounce of taffeta, trimmed with rows of pin tucking; also deep underpiece, with narrow frill; lengths 36 to 42. Thursday . . . 2.50

Misses' Moire Petticoats \$1.00

Soft quality imported moire; black only; fashioned to suit misses and small women; knife-pleated flounce; lengths 32 to 36. Thursday 1.00

The Best Footwear

HANAN SHOES FOR MEN.

"Ritz."
No. 726 — Men's tan Russia calf, plain lace style, made on neat recede toe styles, with blind eyelets; low flat walking heels; sizes 5 to 11; widths C, D and E. Per pair 11.00

"Baltimore."

Men's, black wax finish, calf leather, plain lace style; straight fitting toe style, with dull calf uppers; sizes 5 to 11; widths B, C, D. Per pair 9.00

"VICTOR" BRAND BOOTS.

"West End."
No. 0565 — Men's black kid, plain lace style, made with kangaroo toe caps, light weight sole, flat heels; sizes 5 1/2 to 11. 4.50

"Bond Street."

No. 0583 — Men's all tan calf leather, plain lace, made on recede toe style, low flat heels; sizes 6 to 11. Per pair 4.95

"The Osteotarsal" Boot for Women.

Ask for No. 279—In black kid, lace; arch conformer, with special welt sole and arch; endorsed by osteopaths everywhere; this shoe puts unused foot muscles to work, and corrects many ailments; sizes 2 1/2 to 7; D and E widths. Per pair 7.00

NAMES THAT SIGNIFY SMART STYLE.

"Gotham."

No. 265 — Women's black shoe, soap kid, lace; made on neat recede toe style; white stitched imitation toe cap and facing; medium light spool heel; sizes 2 1/2 to 7; B, C, D widths. . 7.00

"Misfax."

No. 300 — Women's patent vamp button; made on stylish last, with Cuban heel; black cloth uppers; sizes 2 1/2 to 7; widths C, D, E. Per pair 6.00



MILLINERY

SMART SUIT HATS AT \$7.50

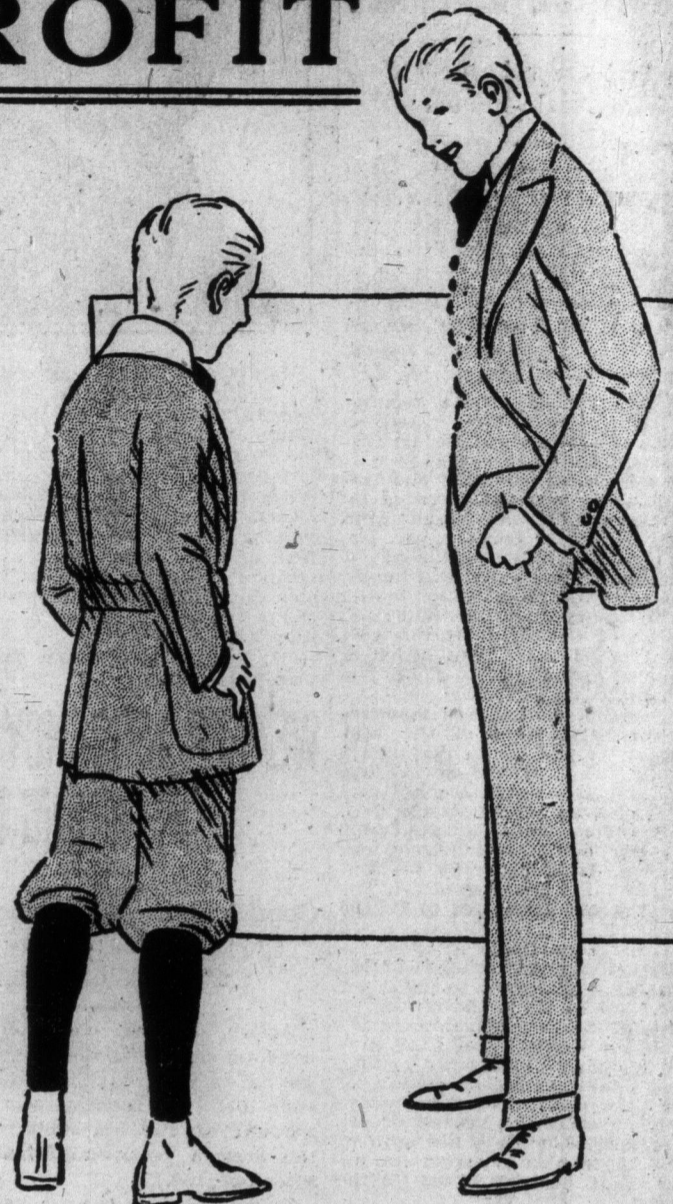
Copies of New York's best styles. Lister hats are proving to be one of the most often asked for in New York.

IN OUR OWN WORKROOMS

Over 100 Smart Hats have been made, copied, with some variations, from New York models; cirre ribbons, imitation gaura mounts, small smart wings, and waxed flowers and foliage, are among this season's novelties used in trimming them. Styles for the young women will be well represented 7.50

Do You Remember Your First Long Trousers?

If you have a boy ready for his first "grown up" suit—bring him in Today.



YOUTHS' SUITS AT \$15.00.

Two-Button, Soft Roll, Sack Suits, with narrow shoulders and close-fitting backs; vest high cut and single-breasted, with a narrow collar; trousers cut in narrow width; the material is English, black with white thread stripe; sizes 32 to 36. Thursday 15.00

ENGLISH BURBERETTE COATS.

Dependable English cloth, tan or khaki color, plain pattern, cut 48 inches long, single-breasted, fly front, with patch pockets; silk through shoulders and sleeves; sizes 36 to 46. Thursday selling price 18.50

BOYS' SPRING SUITS, WITH EXTRA BLOOMERS.

Gray, brown and blue-gray tweeds; cut single-breasted yoke style, with pleats to belt at waist, and full cut bloomers; extra bloomers to match; twilled linings; sizes 26 to 35. Thursday . 4.95

BOYS' KHAKI SERGE MILITARY SUITS AT \$4.50.

Strongly tailored from imported khaki serges, the regulation military style; single-breasted coat, buttons up to the chin; stand collar; patch pockets, shoulder straps, brass buttons and stripes on sleeve; bloomers cut full, to button down leg; puttees to match; sizes 21 to 28. Thursday 4.50

ENGLISH WHIPCORD COATS.

A good shade, plain brown cloth, made up in one of the most sensible styles; single-breasted, fly front, 48 inches long; roomy and loose; silk through shoulders and sleeves; best English tailoring; sizes 36 to 42. Price 22.00

3500 Men's Shirts at 69c

WERE 89c, \$1.00, \$1.25, \$1.50.

Neglige Shirts, hairline, double and cluster stripes, on light background; also French striped pique, English woven cloths; all guaranteed fast colors; coat styles; laundered and double French cuffs; sizes 14 to 17. Regular 89c, \$1.00, \$1.25, \$1.50. Thursday 69
Main Floor, Yonge Street Side.

LINEN COLLARS, SPECIAL, 5c.

Four-Ply Linen Collars, all first quality stock, "Tooke," and "W., G. & R." makes; all the newest styles and shapes; quarter sizes from 12 to 18. Regular 2 for 25c, Thursday 5
Bargain Circle, Queen Street.

MEN'S MERINO UNDERWEAR.

"Tru-Knit" and "Zimmerknit" makes, spring weight, wool and cotton mixture. Thursday at 49

Brass, Glass and China

Brass Jardinieres, \$1.75 — Hammered brass, dull or bright finish; three ball feet; size to fit 8-inch pot, Thursday 1.75

\$2.25 Pierced Brass Fern Pots at \$1.49 — 8-inch flat pots, pierced brass, three ball feet, and copper lining; dull finish. Thursday 1.49

Regular \$3.75 Sugar and Cream Sets at \$2.29 — Cut glass, star and floral cutting; rich, clear, heavy blanks. Regular \$3.75. Thursday at 2.29

Cut Glass Fruit Bowls, \$2.49 — Richly Cut Fruit Bowls, in the star or floral designs. Thursday 2.49

\$2.75 Cut Glass Vases at \$1.95 — Trumpet shape vases, pretty floral cutting on fine quality glass. Thursday at 1.95

Royal Nippon China — Fruit Set, of 7 pieces; floral decoration. Thursday 1.75

Regular \$2.50 Cake Sets for \$1.75—Six small plates and one large cake plate. Thursday 1.75

Manufacturer's Seconds in Table Cloths

All pure linen, with slight imperfections; good designs; sizes 2 x 2 and 2 x 3 yards. Regular \$2.75 and \$3.25. Thursday 1.69

OTHER STAPLES AND LINENS.

Unbleached Sheeting, heavy, 2 1/2 yards wide, plain weave. Regular 32c yard. Clearing Thursday at, per yard 25

Fancy Plaid Blankets, soft napped finish, range of pretty colorings; edges nicely bound. Thursday, per pair 10.50

Reversible Silkoline Bed Comforters, white, fluffy cotton filling; size 72 x 72 inches. Thursday 3.50

All Fancy Linens are now on the Fourth Floor, Yonge street section. An exceptionally fine range of dainty pieces.

The Market Telephone Adelaide 6100

MEATS.
3,000 lbs. Simpson Quality Round Steak. Special for 10c 1.15
Rolled Boneless Brisket Pot Roast, lb. 17
First Choice Prime Rib Roast, per lb. 22
500 lbs. Fresh Creamery Butter, lb. 65
Choice Red Salmon, 2 lbs. 25
Edwardsburg or Beehive Table Syrup, 6-lb. can 25
Finest Featherstrip Coconut, per lb. 18
Salt in bags, 2 bags 14
Quaker Oats, large package 24
Fresh Boiled Wheat, per stone 50
Peanut Butter in bulk, our own make, per lb. 18
Finest Evaporated Peaches, 2 lbs. 25
Imported Midland Vinegar, imperial quart bottle 25
Finest Pot barley, 8 lbs. 25
Fancy Japan Rice, 3 lbs. 25
Pure Gold Quick Tapioca, Chocolate and Custard Powder, 3 packages 25
Finest Brand Jam, assorted 2-lb. pails 25
Finest Canned Apples, per tin 11
Finest Evaporated Apples, per lb. 65
500 lbs. Fresh Creamery Butter, lb. 65
Special tin 25
Finest Chervil, 1/2 lb. 25
tin 17
Pure Corn in Milk, per lb. 25
1,000 lbs. Fine, High, Full Bodied Assam Tea, of uniform quality and fine flavor. A 50c tea anywhere. Thursday, per lb. 50

FRUITS.
One car Choice California Sun-kist Oranges, food size, sweet and seedless, per doz. 25
Choice Grape Fruit, extra large size, 3 for . . . 55
Choice Dried Onions, basket 10

POULTRY FEED.
One car Mixed Scratch Feed for Chickens, Special, 20 lb. or 50 lb. cwt. Per cwt. 5.15
Bran or Shorts, Special, 60 lb. or 100 lb. cwt. Per cwt. 1.20

THE ROBERT SIMPSON COMPANY LIMITED