

# List of Simpson's Half-Day Specials for Today

Consult the Oracle and find your Lucky Star for a Saturday morning bargain.



## MAIN FLOOR

★ **Men's Suits — Two and Three Pieces, \$10.50.**  
English tweeds, small check and stripe patterns, grays and browns, sizes 35 to 44, were \$15.50 and \$18.00.

★ **Men's Raincoats at \$5.00.**  
Double texture paramatta English cloth; motor style; sizes 36 to 44.

★ **158 Pairs Khaki Trousers at \$1.49.**  
Government standard cloth; sizes 32 to 42; were \$2.00.

★ **White Duck Pants, \$1.00.**  
Sizes 29 to 44.

★ **Boys' Norfolk Suits, \$3.95.**  
English gray and brown tweeds; check patterns; sizes 24 to 35, full cut bloomers.

★ **Boys' Wash Suits, 95c.**  
Assorted sample suits, Madras, Galatesa and Satara cords; ages 2½ to 6 years; were \$1.50, \$2.00.

★ **Men's \$1.25 to \$2.00 Outing Shirts, 97c.**  
"Sport," "Fre-nek" and "Gymkana" shirts, white only; all sizes.

★ **Men's Summer Underwear, 49c.**  
Combinations, nainsook, balbriggan, mesh and "poros knit," all sizes in the lot; were 75c to \$1.00.

★ **Men's \$1.50 Negligee Shirts, 95c.**

★ **Men's \$1.50 to \$2.00 Panamas, 75c.**

★ **Men's \$2.00 to \$2.50 Straw Boater Hats, 95c.**

★ **Men's \$1.50 to \$2.00 Soft Hats, 95c.**

★ **Women's 50c Puritan Collars, 25c.**  
New deep style in organdy voile.

★ **17-inch Corset Cover Embroideries, 15c.**  
25 patterns.

★ **Sample Chiffon Veils, 19c.**  
All colors, 50c value.

★ **Pearl Necklaces and Sumbursts, \$5.95.**  
14k. gold; several designs, real pearls. Regular \$7.50, \$8.00 and \$10.00.

★ **\$12.00 Cameras, \$8.95.**  
Picture size 3½ x 4½ inches.

★ **6-inch Ribbon, 15c.**  
Pure silk taffeta, range of best colors.

★ **50c Holiday Reprint Books, 25c.**

★ **Salt and Pepper Shakers, 19c.**  
Cut glass, sterling top. Regular \$1.00 pair.

★ **Open Salt Cellars, 15c.**  
Silver mounted cut glass. Regular 40c each.

★ **\$4.50 Military Wrist Watch, \$3.00.**  
7 jewels, gunmetal case, leather straps.

★ **\$1.00 Parasols for 39c.**  
Dresdens, stripes and combination colors.

★ **\$2.00 to \$3.00 Parasols, \$1.48.**

★ **SECOND FLOOR**

★ **Women's \$1.25 and \$1.50 Panamas for 79c.**

★ **\$1.25 Silk and Pique Outing Hats, 50c.**

★ **\$2.50 to \$3.50 Trimmed Hats, \$1.00.**  
Clearing our summer hats.

★ **1,000 Yards Black Silk Paillette, 87c.**  
36 inches wide. Regular \$1.10.

★ **1,000 Yards Black Crepe De Chine, \$1.10.**  
Range of evening and street wear colors; 40 and 42 inches wide. Regular \$1.33.

★ **1,000 Yards Habutai Silk, 39c.**  
Black and Ivory, 36 inches wide. Regular 50c.

★ **Worsted Check Suiting, 38c.**  
Black and white checks, 42 inches wide. Regular 50c.

★ **750 Yards English College Serge at 55c.**  
Indigo, navy and black. Regular 65c and 75c. No phone or mail orders.

★ **Crepe de Chine Poplin Armures and San Toys, 75c.**  
42 inches wide. Regular \$1.00.

★ **Cream Chinchilla Cloaking, \$1.10.**  
54 inches wide, ripple and curl weaves. Regular \$1.50.

## The August Hosiery Sale's Saturday Savings

★ **Women's Silk Hosiery, black, white and stripes, \$1.50 value, Saturday \$1.00.**

★ **Women's Silk Ankle Hosiery, black, white and colors, 3 pairs \$1.00, pair 35c.**

★ **Women's Silk Ankle Hosiery, black and white, Saturday \$1.00, pair 35c.**

★ **Women's Mercerized Black Lisle Hosiery, Pen-Angle "seconds," Regular 35c to 50c, Saturday \$1.00, pair 35c.**

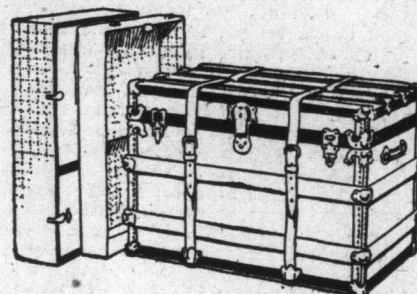
★ **Women's Fibre Silk Ankle Hosiery, white and black, 25c.**

★ **Boys' and Girls' Stockings, one-and-one rib, all-wool cashmere; sizes 7½ to 8½ only. Regular 40c, for \$2.50.**

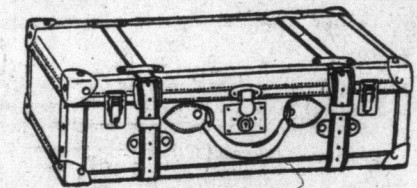
★ **Men's Silk Lisle Socks, gray, tan, navy, black and white; sizes 9½ to 11. \$2.50.**

## A Word to HARVESTERS

Harvesters going west should take advantage of this special canvas-covered Tourist Trunk. Strong and well-made, with hard-wood slats and outside straps, the bottom of sheet iron, the trunk is fitted with strong lock and bolts. It is fitted inside with two trays, and comes in three lengths, 32 in., 34 in. and 36 in. The price ..... 5.00



A deep 24 in. Leather Suit Case, with reinforced corners and wide outside straps, has a swing handle, good lock and catches, and is full lined. Regularly \$5.00, for 3.95. Mail and Telephone Orders will be filled.



THE SIMPSON DRUG STORE

★ **Witch Hazel Extract, 25c size, Saturday ..... 18**  
★ **Listerine, 25c size, Saturday ..... 16**  
★ **Wahoo Cathartics, 45c size, Saturday ..... 15**  
★ **Murray's Fluid Magnesia, genuine imported, Saturday ..... 25**  
★ **Rosco Hair Tonic ..... 50**  
★ **Mulsified Coconut Oil, 50c size ..... 31**  
★ **Epsom Salts, 1-lb. cartons ..... 5**  
★ **Shofa, cleans the hands, 25c size, Saturday ..... 15**  
★ **Bisulphate Magnesia, tablet form, 75c size, Saturday ..... 53**  
★ **Sponges, good assortment, up to 35c, Saturday ..... 19**  
★ **War Tax Extra.**

## Toilet Requisites

★ **Spanish Pure Olive Oil Castile Soap, 2-lb. bar, special ..... 25**  
★ **Williams' Toilet Soaps, ½-lb. cake, oatmeal, honey and elder flower. Special, 3 cakes for 25c ..... 25**  
★ **Hair Brushes, regular 75c, special ..... 35**  
★ **Hand Mirrors, regular 65c, special ..... 25**  
★ **Tooth Brushes, regular 85c, special ..... 25**  
★ **Roger & Gallet's Violette Face Powder, special ..... 31**  
★ **Odorono Deodorant, special ..... 50**  
★ **Imported Air Float and Corylopsis Talcum Powder, special, tin ..... 10**  
★ **Lustrite Cold Cream and Vanishing Cream, regular 25c, special, 35c ..... 15**  
★ **Toilet Lanoline Hair Pomade and Camphor Ice, regular 5c, special, 3 tins for ..... 9**  
★ **War Stamps Extra.**

## Famous Brands on Some of These Saturday Sale Boots

A rare list of boots has been prepared for your choosing at 8.30 a.m. Saturday. It's a short day, too, and therefore the values have been set to do a day's business in 4½ hours. Extra sales force at 8.30 a.m.

★ **FRANK A. SLATER'S "STRIDER" AND AYLMEYER-MADE BOOTS FOR MEN AT \$2.95.**

In button, lace and blucher boots, patent colt, gunmetal calf, vici kid, tan winter calf, mahogany and tan willow calf; best quality No. 1 oak sole leathers, three weights; recede, high, round and wide toe shapes; straight, swing and foot-form last shapes; steel gray, wand, black and brown cloth and dull calf leather uppers; sizes and half sizes 5½ to 11. Values \$4.00 to \$6.00. "Strider" and "Aylmer" boots. No mail orders. Saturday ..... 2.95

★ **"DOROTHY DODD" AND "QUEEN QUALITY" SUMMER FOOTWEAR.**

900 pairs, ladies' pumps, colonials and Oxfords; new foxings, latest lasts, best trimmings; patent colt, vici kid and black Russian leathers. Several widths, sizes 1 to 7. Values \$4.50 to \$6.00. No mail or phone orders. Dorothy Dodd and Queen Quality. Saturday ..... 1.99

## Store Closes at 1 p.m. Saturday No Noon Delivery

Visitors to the city who know the advantages of this company's one-day service by mail are reminded that they can purchase here in the store the same class of merchandise as we catalogue and have the goods delivered to their homes with all charges prepaid. Groceries, furniture and other heavy or bulky goods not catalogued are also prepaid to any station in Ontario when the total order is ten dollars or over.

SPECIAL SATURDAY MORNING BREAKFAST IN THE PALM ROOM, 15c, 20c AND 25c.

## SECOND FLOOR

★ **35-inch Lawns, 7½c.**  
Soft finish. Regular 12½c.

★ **36-inch and 40-inch Crepes, 14½c.**  
Plain and lace striped. Regular 25c.

★ **\$5.00 to \$7.50 Toric Eyeglasses, \$2.95.**  
Extra charge of \$1.50 where special grinding is necessary.

## THIRD FLOOR

★ **\$1.00, \$1.25 and \$1.50 Corsets at 75c.**  
Stock clearance; popular styles; sizes 19 to 30 inches.

★ **15c to 25c Vests for Women, 10c.**  
White ribbed cotton, sizes 32 to 38.

★ **65c Corset Covers, 35c.**  
Nainsook, lace and embroidery trim, sizes 24 to 44.

★ **150 Summer Dresses at \$2.89.**  
This season's styles. Regular \$5.00.

★ **Women's Silk Dresses, \$3.95.**  
Assorted shades. Regular \$7.50.

★ **Misses' Sports Coats, \$3.95.**  
Plain or checks. Regular \$7.50.

★ **Girls' Reefer Coats, \$2.95.**  
Assorted sizes; serges, checks and taffetas; some fancy collars. Regular \$5.00 to \$7.50.

★ **200 Wash Skirts at 35c.**  
Assorted sizes. Regular 65c and 75c. No phone orders.

★ **\$1.95 Middies at \$1.**  
Clearing our best stock, all white Palm Beach and drill; some piped with Dutch and navy blue; sizes 34 to 42 bust.

## FOURTH FLOOR

★ **\$1.55 and \$1.75 Sheets at \$1.39 Pair.**  
Bleached hemmed ends, 70 x 90 inches.

★ **Plaid Blankets \$1.49 Pair.**  
Sole in display, 64 x 80 inches.

★ **Crochet Bed Spreads, 98c.**  
White, hemmed, 70 x 90 inches.

★ **Crash Roller Towelling, 10c.**  
Scotch, red border, 17 inches wide.

★ **Linen Damask Table Covers, \$2.45.**  
Bleached, pretty border designs.

## SIXTH FLOOR

★ **Picnic and Lunch Baskets.**  
Fibre matting, willow and split cane; some suit cases and club bags among them. Baskets, 35c to \$2.50. Club Bags, 35c to \$1.75. Suit Cases, \$1.00 to \$4.50. Telescopes, 55c to \$1.00.

## BASEMENT

★ **Cups and Saucers, 5c.**  
English ware, blue decoration. Regular \$1.20 dozen.

★ **75c and 98c Japanese China at 49c.**  
Hand-painted mayonnaise sets, sugar and cream sets, ash trays, bon-bons, rose jars, but bowls, jugs, hair receivers, tea stands, etc.

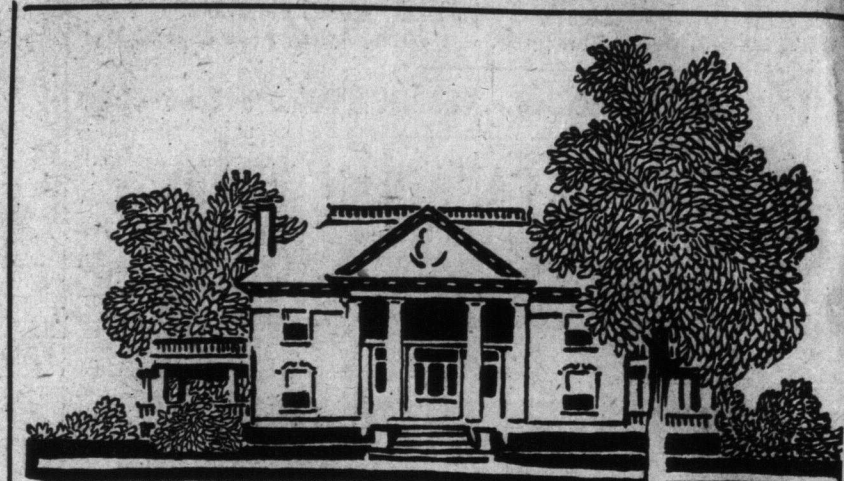
★ **Stilson Pipe Wrenches, 65c to 99c. 6 to 14 inches.**

★ **Bit Braces, 10-inch Sweep, 37c.**

★ **Table Knives, 17c Each.**

★ **\$2.25 Safety Razors for 98c.**

★ **Aluminum Saucepans at 25c.**  
Lipped, quart size.



## THE AUGUST FURNITURE SALE

### Items for This Morning

★ **Brass Bedstead, continuous 2-inch posts; neatly designed husks; satin, bright or polette finishes; standard sizes. Regularly \$18.90. Saturday ..... 13.95**

★ **Extension Dining Table, in selected quarter-cut oak; fumed or golden finish; 45-inch top, extending to 6 feet; massive, round pedestal. Regularly \$18.50. Saturday ..... 9.95**

★ **Extension Dining Table, in solid quarter-cut oak; fumed or golden finish; 48-inch top, extending on easy running slides to 8 feet; neat pedestal and double locks. Regularly \$25.00. Saturday ..... 14.95**

★ **Buffet, genuine quarter-cut oak; fumed or golden finish; two shaped top drawers, double door cupboard, and deep linen drawers; British bevel mirror. Regularly \$28.50. Saturday ..... 18.75**

★ **Dining-room Chairs, in solid quarter-cut oak; fumed or golden finish; the box seats are upholstered and covered in leather; five side and one arm chair in set. Regularly \$17.50. Saturday ..... 12.85**

★ **Library Table, in solid quarter-cut oak; fumed or golden finish; has centre drawer and bookshelves at each end. Regularly \$20.50. Saturday ..... 12.15**

★ **Parlor Tables, in mahogany finish; neat design. Regularly \$5.00. Saturday ..... 2.45**

### Drapery Fabrics in the Sale

★ **American Art Silkolines at 14c Yard. Mixed colorings, in soft shades of rose, green, amber, etc.; floral and scroll patterns; 36 inches wide.**

★ **English Curtain Nets at 23c. Good quality Nottingham make; flit, block and floral designs; white or ivory; 40 to 45 inches wide.**

★ **Imported Velvets at \$1.50 Per Yard—Lustrous, mercerized finished velvets for portieres, window hangings, etc.; Havana brown, myrtle green, gold or blue, 50 inches wide.**

★ **All-wool English and French Tapestries, \$4.75 Yard—Nile, rose or gold, dark or light grounds, 50 inches wide.**

★ **Sunfast Assyrian Cloth at \$1.25 Yard—Granite weave, soft hanging cloth, old gold, dark brown, olive or Nile green, 50 inches wide.**

★ **English and French Printed Cretonnes and Chintzes, \$1.25 Yard—Tafeta, rep or tulle grounds, large or small floral patterns, 50 inches wide. Regularly \$2.50 yard.**

★ **English Art Serges at 75c Yard—Heavy quality, some with mercerized mohair nap, 50 inches wide, olive or dark green, red or brown.**

★ **Casement Curtaining at 10c Per Yard—An assortment of frilled muslin, nets with insertion and lace edging, colored bordered acrim, plain scrim with insertion and point d'esprit, 30 and 40 inches wide.**

★ **Tapestry Curtains at 50c Each—Heavily fringed top and bottom, 40 inches wide, crimson only. 50 only to clear.**

★ **All of these special priced curtain nets, as well as other drapery materials, made up without charge during our August Sale. Also re-upholstering done at half price.**

★ **"DO IT NOW" has a special significance when applied to our HOMELOVERS' CLUB. By joining the Club now you will be able to secure the advantages of the wonderful August Sale prices on Furniture, Draperies, Carpets, Lighting-Fixtures and other home-furnishings.**

★ **It's an opportunity to draw interest on your income before you get it, for the savings amount to a very large part of the usual prices.**

★ **ASK THE CLUB SECRETARY ABOUT IT, FOURTH FLOOR.**

## Carpets, Rugs and Linoleums, Priced for a Morning's Big Selling

★ **Short lengths of Linoleums, suitable for bathrooms, vestibules, etc., at less than one-half price in some cases; useful small-sized rugs at big reductions, and many other special attractive features to crowd a day's selling into four and one-half hours.**

★ **SHORT LENGTHS OF INLAID 85c to \$1.25 LINOLEUMS SATURDAY AT 41c.**

★ **Very short pieces up to about 4 square yards, which would do for vestibules, bathrooms, etc. Cannot promise phone or mail orders. Saturday, 8.30, square yard ..... 41**

★ **REMNANTS LINOLEUM AND FLOOR CLOTHS.**  
Short ends up to 6 square yards. Regular 27c to 50c. Cannot promise phone or mail orders. Saturday, square yard ..... 19

★ **1,000 YARDS STAIR OILCLOTH, 15c AND 18c.**  
18 inch and 22½ inch wide; painted back. 18 inch wide, 15c; 22½ inch wide, 18c.

★ **800 YARDS OAK BOARD AND 2-INCH BLUE TILE FLOOR CLOTH.**  
The Oak Board is the regulation striped effect; 2 yards wide only. Special price for Saturday Morning Sale, per square yard ..... 21

★ **Tile Pattern, 2 yards wide only; extra heavy. Square yard ..... 25**

★ **TAPESTRY RUGS, \$8.75.**  
Three dozen rugs in various colors and styles; sizes 9 x 12 and 10.6 x 12. Regular \$9.75 to \$11.45 each. Saturday morning ..... 8.75

★ **A very useful size; 2 yards by 1 yard; colors of red, blue, brown and green; designs woven through. Saturday ..... 33**

★ **JAPANESE MATTING RUGS AT 35c.**

★ **Good assorted colorings and patterns. Regular, bundle, \$1.50. Saturday 99c.**

★ **R. S. CO. PREPARED PAINTS.**  
For inside or outside use; good assortment of colors. Regular 55c quart. Saturday ..... 49

## GROCERIES

★ **TELEPHONE DIRECT TO DEPARTMENT, ADELAIDE 6100.**

★ **2000 lbs. Fresh Creamery Butter, White Clover Brand, per lb. .... 32**

★ **Toasted Cornflakes, 3 packages ..... 25**

★ **Leaf Sugar, 3 lbs. .... 25**

★ **Clark's Pork and Beans, in Canned Sauces, large tin ..... 11**

★ **Choice Red Salmon, 2 tins ..... 20**

★ **Finest MUI Cheese, per lb. 3 packages ..... 20**

★ **Shirriff's Marmalade, 2-lb. jar ..... 20**

★ **Baker's Cocoa, 3½-lb. tin ..... 25**

★ **Finest Canned Corn, Peas or Tomatoes, 3 tins ..... 25**

★ **Finest Canned Lobster, ½-lb. tin ..... 25**

★ **Gorton's H. P. Sauce, bottle ..... 25**

★ **Finest Canned Fruit, Raspberries, Strawberries and Cherries, per tin ..... 18**

★ **Choice Olives, stuffed or plain, bottle ..... 15**

★ **Pure Gold Salad Dressing, 3 bottles ..... 25**

★ **Dalton's Lemonade Syrup, 3 bottles ..... 25**

★ **500 lbs. Fresh French's Shortbread, per lb. .... 25**

★ **Clark's Potted Meats, assorted, 6 tins ..... 25**

★ **Libby's Sweet Mixed Pickles, 20-oz. bottle ..... 25**

★ **500 lbs. Fresh Fruit Cakes, per lb. .... 15**

★ **Fancy Mixed Biscuits, 2 lbs. .... 25**

★ **FRESH ROASTED COFFEE, PER LB., 27c.**  
1000 lbs. Fresh Roasted Coffee, in the bean, ground pure or with chicory. Saturday, per lb. .... 27

The Robert Simpson Company, Limited