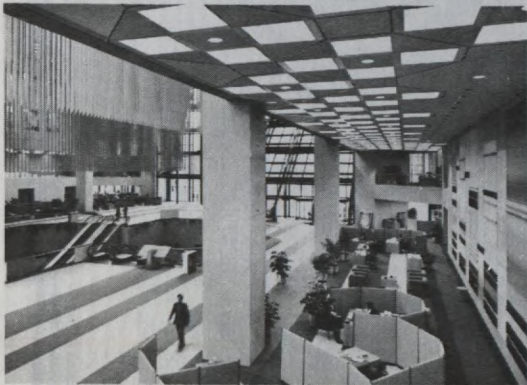


ROYAL BANK PLAZA



11

11
Banking hall from mezzanine level.



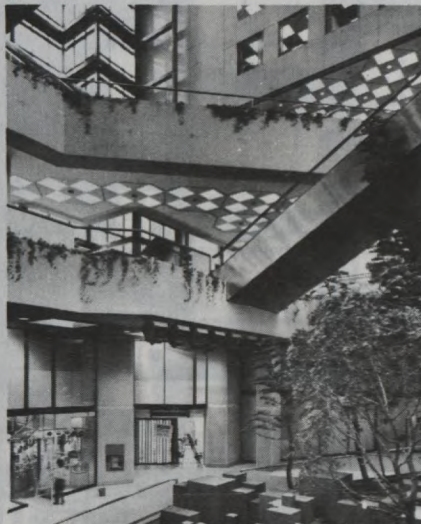
12

12
Personal banking area, ground floor. Fixtures are plant lights, on between midnight and 6 am only because of glare.



13

13
On banking floor, under mezzanine, looking north to Toronto-Dominion Centre and over terrace.



14

14
Pedestrians can use the ramp surrounding the garden court and fountain. This view is from the upper concourse looking up to ground and banking floors overlooking Bay Street. This level also contains tunnels to the Toronto-Dominion Centre, Wellington Street and the Union Station.

15
The 12-storey urban room, looking east to Bay Street. This is at the banking hall level. On the right, the reflective windows of the south office tower. The escalators are down to the ground floor level at grade. Mezzanine level can be seen on right.

