



### The Development of Canada

The two pages of pictures here given are from photographs of scenes on the route of the Grand Trunk Pacific Railway. From Port Arthur, on Lake Superior, to Edmonton, almost within sight of the foothills of the Rockies, the construction of the line is being pushed forward with all possible speed. Over the whole line of this route—up till now a wilderness—settlers have already established themselves, the construction gangs being rarely out of sight of settlers' houses. The above picture shows the teams at work on one of the big fills on the prairie. One team will be noticed making a perilous descent.



### A Settler's Home

This sod hut is the home of one of the earliest settlers on the new route in Saskatchewan. He was fortunate in locating, for the railway runs alongside his homestead.



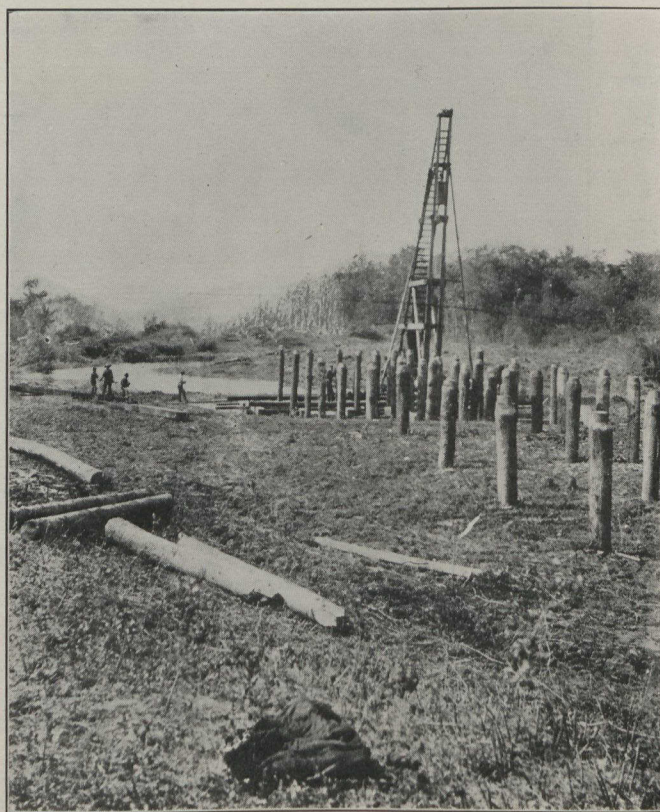
### The Settler's Team

This is the team of the same settler, and two of his boys. The three oxen have done an immense amount of work in breaking up the prairie this summer.



### The Settler's Wife

A happy snap-shot by one of the railway men outside the sod hut shown above.



### Driving Piles

Showing the commencement of one of the Grand Trunk Pacific bridges over a prairie river.