

OUR CHESS COLUMN.

TO CORRESPONDENTS.

J. W. S., Montreal.—Papers to hand. Thanks.

There are strong contrasts in the lives and characters of men in all conditions of human existence, and even among chessplayers...

These two men are almost equally renowned for skill in the game, but how differently circumstanced, as far as the enjoyment of this world's happiness is concerned...

But, as if to prevent the lovers of our game from rejoicing too much over the good fortune falling to the lot of one of their fraternity, another picture is presented...

Paul Morphy is spoken of as suffering from one of the heaviest calamities which can befall a human being.

Nourishing a dislike for that talent, which a few years ago gave him such fame in Europe and America, he appears to be a victim to a constant dread of financial ruin...

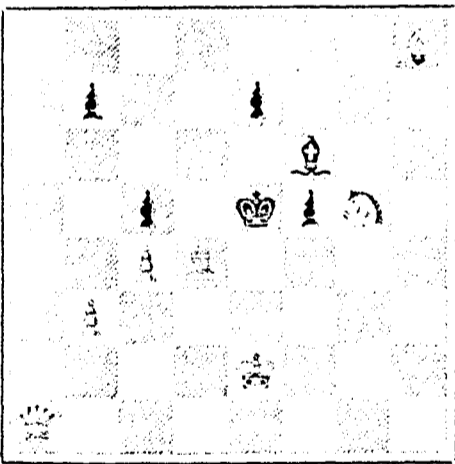
Mr. Blackburne's blindfold exhibition duly came off last Wednesday evening at the City of London Chess Club, and attracted such a number of chessplayers...

THE CHESS AUTOMATON.—The chess automaton "Metaphor" which has been on exhibition in the Metropolis during the past three years, gave a special treat on Saturday evening...

PROBLEM NO. 354

By F. C. Collins.

BLACK.



WHITE.

White to play and mate in two moves.

GAME 481st.

Consultation Game played at Berlin, 19th September, 1851.

(Centre Gambit.)

Table of chess moves for Game 481st, showing White and Black pieces and their positions.

- 27. R takes P
28. K to R sq
29. P takes B
30. Q to Q 4
31. R takes R
32. K to Kt 7
33. Q to Q sq
34. K to B 2

SOLUTIONS.

Solution of Problem No. 352.

- White. 1. Kt to Q 6
2. K to Q B 5
3. B mates
Black. 1. Any
2. Any

Solution of Problem for Young Players No. 350

- White. 1. Q to K 6 ch
2. Kt to Q B 8 (dis ch)
3. R takes R mate
Black. 1. P takes Q
2. R covers

PROBLEMS FOR YOUNG PLAYERS NO. 351.

- White. K at Q R 3
Q at K Kt sq
Kt to K 2
Black. K at Q 4
Paw at Q 3
Q B 3 and 4
White to play and mate in two moves.

"The Children's Magazine of America."

ST. NICHOLAS.

This illustrated magazine for young folks has now attained a circulation larger, probably, than that of any other monthly magazine of its class.

"The Children's Art Magazine."

The greatest living writers of Europe and America are among its distinguished contributors.

BRILLIANT FEATURES OF THE COMING YEAR.

The ninth volume, which begins with the November 1881, number, will contain a new

SERIAL STORY

By Mrs. Mary Mapes Dodge.

editor of ST. NICHOLAS, and author of " Hans Brinker, or the Silver Skates," etc., etc. A second serial story, full of lively incident.

"THE HOOSIER SCHOOL-BOY."

By Edward Eggleston.

author of "The Hoosier School-master," etc. A single article of universal interest.

"HOW CHILDREN SHOULD LEARN MUSIC."

By Richard Wagner.

the eminent composer. Two other serials, one dealing with campaign life in the late war, and the other with Girl and Boy Life in the 13th Century.

CHRISTMAS NUMBER.

which will be ready about December 1st. Price \$1.00 a year; 25 cents a number.

THE CENTURY CO.

Union Square, New York.

APPRENTICE WANTED.

Wanted a respectable well recommended boy as an apprentice to the Bank Note Printing Business.

BRITISH AMERICAN BANK NOTE CO.

MONTREAL.

THE COOK'S FRIEND

BAKING POWDER

Has become a Household Word in the land, and is a HOUSEHOLD NECESSITY

in every family where Economy and Health are studied. It is used for raising all kinds of Bread, Rolls, Pancakes, Girdle Cakes, &c., &c.

THE COOK'S FRIEND

SAVES TIME. IT SAVES TEMPER. IT SAVES MONEY.

For sale by storekeepers throughout the Dominion and wholesale by the manufacturer.

W. D. McLAREN, UNION MILLS,

19-57-362 55 College Street.

CADBURY'S COCOA ESSENCE.

PURE, SOLUBLE, REFRESHING.

It is often asked, "Why does my doctor recommend Cadbury's Cocoa Essence?" The reason is that being absolutely genuine, and concentrated by the removal of the superfluous fat, it contains FOUR TIMES THE AMOUNT OF NITROGENOUS or FLESH FORMING CONSTITUENTS than the average of other Cacaos.

CANADIAN DEPOT: 30, RADEGONDE ST., MONTREAL.

Beware of imitations, which are often pushed by Shopkeepers for the sake of extra profit.

THE CENTURY MAGAZINE,

(SCRIBNER'S MONTHLY.)

FOR THE COMING YEAR.

With the November number began the new series under the title of THE CENTURY MAGAZINE, which will be, in fact, a new, enlarged, and improved "SCRIBNER."

FOURTEEN ADDITIONAL PAGES.

The following is a summary of the leading features of the new series for the year:

A NEW NOVEL BY MRS. BURNETT (author of "That Lass o' Lowrie's," etc.), entitled "Through One Administration," a story of Washington life.

STUDIES OF THE LOUISIANA CREOLES By Geo. W. Cable, author of "The Grandissimes," etc.

A NOVEL BY W. D. HOWELLS (author of "A Chance Acquaintance," etc.), dealing with characteristic features of American life.

ANCIENT AND MODERN SCULPTURE. A "History of Ancient Sculpture," by Mrs. Lucy M. Mitchell, to contain the finest series of engravings yet published of the masterpieces of sculpture.

THE OPERA IN NEW YORK, by Richard Grant White. A popular and valuable series, to be illustrated with wonderful completeness and beauty.

ARCHITECTURE AND DECORATION IN AMERICA will be treated in a way to interest both householder and housewife.

REPRESENTATIVE MEN AND WOMEN OF THE 19th CENTURY. Biographical sketches, accompanied by portraits.

SCENES OF THACKERAY'S HAWTHORNE'S AND GEORGE ELIOT'S NOVELS. Succeding the illustrated series on the scenes of Dickens's novels.

THE REFORM OF THE CIVIL SERVICE. Arrangements have been made for a series of able papers on this pressing political question.

POETRY AND POETS IN AMERICA. There will be studies of Longfellow, Whittier, Emerson, Lowell, and others, by E. C. Stedman.

STORIES, SKETCHES AND ESSAYS may be expected from other celebrated writers.

THE EDITORIAL DEPARTMENTS throughout will be unusually complete, and "The World's Work" will be considerably enlarged.

The price of THE CENTURY MAGAZINE will remain at \$4.00 per year (35 cents a number). The portrait (size 2 1/2 x 3 1/2) of the late Dr. Holland, is used just before his death, photographed from a life-sized drawing by Wyant Eaton, will possess a new interest to the readers of this magazine.

THE CENTURY CO.,

Union Square, New York.

APPRENTICE WANTED.

Wanted, a respectable young man, of good mathematical education, to learn Geometric Lathe Engraving. None without first-class recommendations required.

BRITISH AMERICAN BANK NOTE CO., MONTREAL.

British American BANK NOTE COMPANY, MONTREAL.

Incorporated by Letters Patent. Capital \$100,000.

General Engravers & Printers

Bank Notes, Bonds, Postage, Bill & Law Stamps, Revenue Stamps, Bills of Exchange, DRAFTS, DEPOSIT RECEIPTS, Promissory Notes, &c., &c., Executed in the Best Style of Steel Plate Engraving. Portraits a Specialty. G. B. BURLAND, President & Manager.

APPRENTICE WANTED.

Wanted, a respectable, well-educated young man, with a taste for art, to learn Pictorial or Letter Engraving. Good references required. Apply to

BRITISH AMERICAN BANK NOTE CO., MONTREAL.

Montreal Post-Office Time-Table

NOVEMBER, 1881

Table with columns for DELIVERY, MAILS, and CLOSING, listing various routes and times for Montreal Post-Office.

(A) Postal Car Bags open till 8.45 a.m., and 9.15 p.m. (B) Do 9.00 p.m.

Mails leave for Lake Superior and Bruce Mines, &c.

Mails for places on Lake Superior will leave Windsor on Mondays, Wednesdays and Fridays. Mails for Bruce Mines, Garden River, Little Current, &c., will leave Parry Sound on Tuesdays.

Mails leave New York by Steamer:

- For Bahamas 5th and 22nd November.
Hermuda, 3rd and 17th November.
Cuba, 3rd November.
Cuba and Porto Rico, 10th, 17th and 24th November.
Cuba, Porto Rico & Mexico, 3rd, 17th & 24th Nov.
Cuba and Mexico.
Curaçoa and Venezuela, 12th & 26th November.
Jamaica and West Indies, 17th November.
Jamaica and the U.S. of Columbia (except Panama), 11th and 25th November.
St. Thomas and Barbados.
For Hayti direct, 4th, 15th and 25th November.
Hayti, St. Domingo and Turks Island, 1st Nov.
Hayti and Maracaiba.
Porto Rico, 9th, 23rd and 30th November.
Santiago and Cienfuegos, Cuba, 8th November.
South Pacific and Central American Ports, 10th, 19th and 30th November.
Brazil and the Argentine Republic, 5th and 18th November.
Windward Islands, 5th and 22nd November.
Greytown, Nicaragua, 10th November.

Mails leave San Francisco: For Australia and Sandwich Islands, 19th Novem ber. For China and Japan, 4th and 18th November.