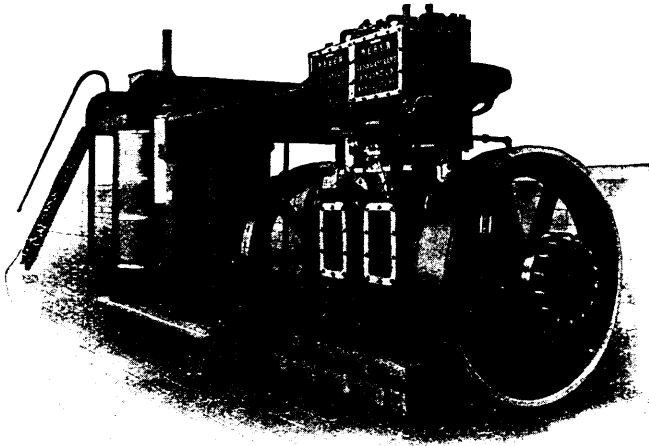


# WEBER PRODUCER GAS POWER PLANTS

SAVE 50 PER CENT. TO 75 PER CENT. OF YOUR FUEL COST!



Complete Gas Engine and Producer Plant.  
Sizes to 1000 H. P.

1 HORSE POWER  
1 HOUR  
1 POUND COAL

**WEBER GAS ENGINE CO.**

BOX 411, KANSAS CITY, MO.

**FUELS:**  
ANTHRACITE COAL,  
COKE, CHARCOAL

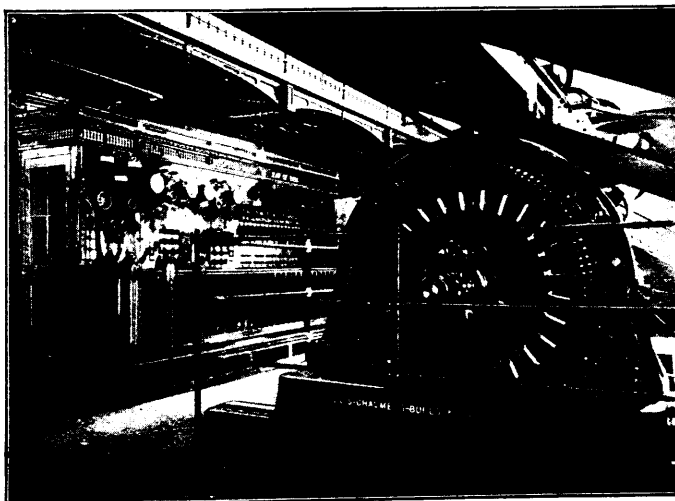
### RESULTS

FAIRVIEW, Okla.,  
Jan. 5, 1906.

Our 50 H.P. Weber Suction Gas Producer and Weber Gas Engine has proven to be all you claimed and has fully met your guarantee. We have run our Mill at a capacity of 80 bbls. per day, on a fuel consumption of 40 lbs. of semi-anthracite coal per hour. Our steam plant, which we discarded for the Gas Engine, was very expensive to operate. Our saving is far beyond our expectations: we keep accurate account of our power cost, both steam and gas, and our fuel cost is now reduced 75 per cent. Yours truly,  
FAIRVIEW MILLING Co.

### COUNT

# ALLIS - CHALMERS - BULLOCK LIMITED



One of our 80 K. W. Belted Alternating Current Generators and Auxiliary Apparatus Forming the Lighting Plant of the Hospital Mont St. Jean de Dieu, Montreal.

“Allis-Chalmers” Mining, Saw Mill and Flour Mill Machinery, Engines, Pumps and Turbines.

“Bullock” Electric Apparatus.

“Ingersoll” Air Compressors, Rock Drills and Coal Cutters.

“Lidgerwood” Hoisting Engines.

Head Office and Works

**MONTREAL**

District Offices

TORONTO - 810 TRADERS BANK BUILDING.  
WINNIPEG - 251 NOTRE DAME AVE.  
NELSON - JOSEPHINE ST.

MONTREAL - 82 SOVEREIGN BANK BUILDING.  
VANCOUVER - 416 SEYMOUR ST.  
NEW GLASGOW - N.S. TELEPHONE BUILDING.