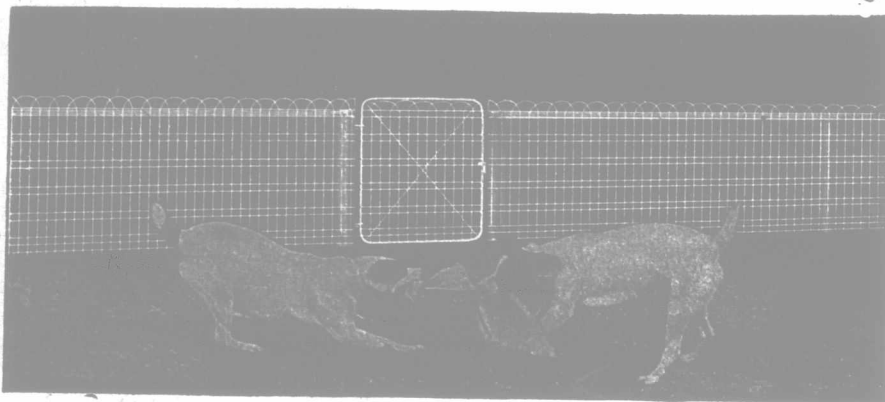
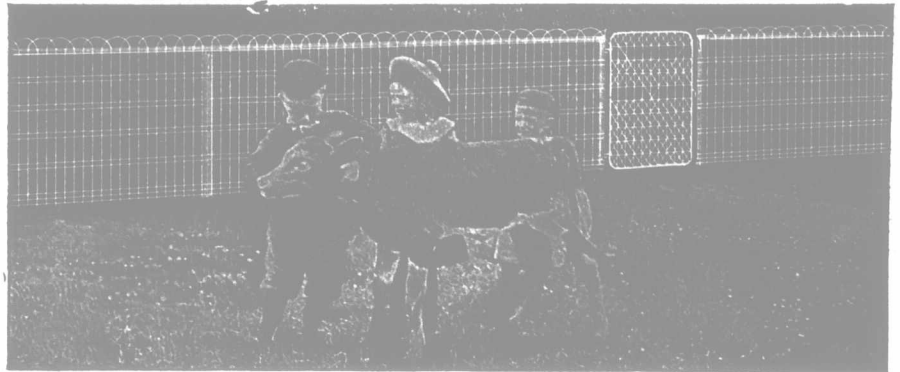


PAGE 'ACME' LAWN FENCE

This famous "Page" Fence comes in rolls up to 200 feet in length. These are painted either white or green, and you may have Page "Acme" Fence in any height from 2 feet to 6 feet tall. Be sure and get the genuine "Page Acme" Fence, for there are imitations on the market that resemble this fence closely. By getting the genuine "Page Acme" Fence, you obtain high-carbon steel-wire uprights, which are as stiff as thick iron rods.



This "Page Acme" Fence makes a beautiful fence for lawns, cemeteries, semi-public institutions, parks, etc. It is remarkably low in cost. When you consider the long life it has from being painted at the very beginning of its service, before you even set it up, you will see how economical it is to use this "Acme" Fence.

We have sold hundreds of miles, especially of the 42-inch width and you will find this "Page Acme" Fence doing service all over the country.

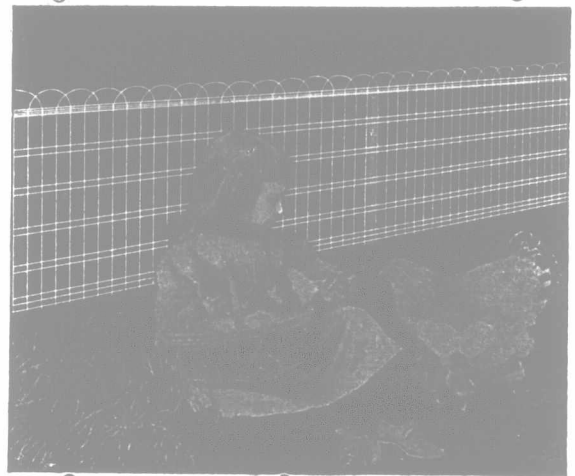
Write us to-day for the Page Catalogue of "Acme" Fences. If you need fence of any kind, remember the Page Catalogue shows it to you at Factory Prices—scores of fences of the best quality.

Send to-day for the Page Catalogue. This catalogue shows all kinds of Lawn and Farm Fences, Fence Material, Iron Fences—everything you possibly can need in this line at moderate prices. Write to-day for the Page Catalogue.

THE PAGE WIRE FENCE CO., LIMITED

Walkerville, Canada

Toronto, King St. and Atlantic Ave. Montreal, 505-517 Notre Dame St. West
St. John, 37 Dock St.
Winnipeg, R. Langtry, 137 Bannatyne St. East



"Go North Young Man!"

WHY?

Because there are millions of acres of agricultural land in Northern Ontario in some cases free, and in others at 50 cents per acre, excelling in richness any other part of Canada, blessing and waiting to bless the strong, willing settler, especially the man of some capital.

For information as to terms, homestead regulations, special railway rates, etc., write to

H. A. Macdonnell
Director of Colonization
TORONTO, ONTARIO

HON. JAS. S. DUFF,
Minister of Agriculture

Genasco

THE TRINIDAD LAKE-ASPHALT
Ready Roofing

Write for the Good Roof Guide Book and samples. Both free.

The Kant-leak Kleet is an improved fastening for smooth-surface roofing.

The Barber Asphalt Paving Company

Largest producers of asphalt and manufacturers of ready roofing in America.

Philadelphia

New York San Francisco Chicago

Canadian Distributors:
Caverhill Learmont & Company

Montreal, Quebec & Winnipeg, Man.

D. H. Howden & Co., Ltd., 200 York St., London, Ont.

INVENTIONS

Thoroughly protected in all countries. EGERTON
R. CASE, Registered Patent Attorney, DEPT. E,
TEMPLE BUILDING, TORONTO. Booklet on
Patents and Drawing Sheet on request.

CANADIAN PACIFIC RAILWAY

HOMESEEKERS' EXCURSIONS

Every second Tuesday until
Sept. 17th inclusive

Winnipeg and return, \$34.00

Edmonton and return, \$42.00

Proportionate rates to other points.
Return limit 60 days.

THROUGH TOURIST SLEEPING CARS
to Edmonton via Saskatoon, also Winnipeg
and Calgary via Main Line.

Ask nearest C. P. R. Agent for Home-
seekers' Pamphlet.

TICKETS AND FULL INFORMATION FROM ANY C. P. R. AGENT

UPPER LAKES NAVIGATION

Steamers leave Port McNicholl Mondays,
Tuesdays, Wednesdays, Thursdays
and Saturdays at 4 p.m. for
SAULT STE. MARIE, PORT ARTHUR and
FORT WILLIAM

The steamer Manitoba, sailing from Port
McNicholl Wednesdays, will call at Owen
Sound, leaving that point 10.30 p.m.

Steamship Express

leaves Toronto 12.45 p.m. on sailing days,
making direct connection with
steamers at Port McNicholl.

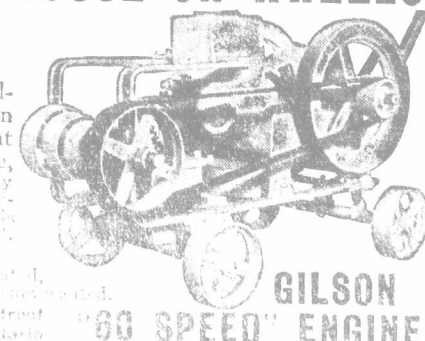
A FARMER'S POWER HOUSE ON WHEELS

Complete with Line Shaft, Truck,
Pump Jack and interchangeable
pulleys capable of 60 changes
of speed.

An engine that carries its own line shaft, pulleys, belt tightener and hangers. The Gilson 60 Speed Engine is a complete power plant in itself. You can haul engine anywhere, attach it to just the tool desired—the only engine that can do this. Costs 100 per cent less than other portable engines. Horse-like sixty—will do 100 per cent more work. 12 H.P., also 3 H.P., 10 H.P. and 15 H.P. engines available.

WRITE TODAY. Write at once for illustrated,
descriptive literature and full information. Samples mailed.

GILSON MFG. CO., Ltd., 81 York Street, Toronto, Ontario



GILSON
60 SPEED ENGINE



SYNOPSIS OF CANADIAN NORTHWEST LAND REGULATIONS.

ANY PERSON who is the sole head of a family, or any male over 18 years old, may homestead a quarter section of available Dominion land in Manitoba, Saskatchewan or Alberta. The applicant must appear in person at the Dominion Lands Agency or Sub-agency of the district. Entry by proxy may be made at any agency, on certain conditions, by father, mother, son, daughter, brother or sister of intending homesteader.

Duties—Six months' residence upon and cultivation of the land in each of three years. A homesteader may live within nine miles of his homestead on a farm of at least 80 acres solely owned and occupied by him or by his father, mother, son, daughter, brother or sister.

In certain districts a homesteader in good standing may pre-empt a quarter-section alongside his homestead. Price, \$3.00 per acre.

Duties—Must reside upon the homestead or pre-emption six months in each of six years from date of homestead entry (including the time required to earn homestead patent) and cultivate fifty acres extra.

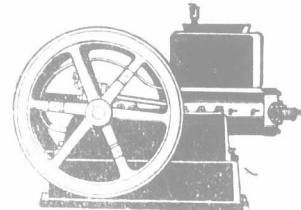
A homesteader who has exhausted his homestead right and cannot obtain a pre-emption may enter for a purchased homestead in certain districts. Price, \$3.00 per acre. Duties.—Must reside six months in each of three years, cultivate fifty acres and erect a house worth \$300.00.

W. W. CORY,

Deputy of the Minister of the Interior.

N.B.—Unauthorized publication of this advertisement will not be paid for.

STANDARD GASOLINE ENGINE



Every one sold on a strong guarantee. Ask for our catalogue of engines.

London Concrete Machinery Co., Dept. B

London, Ont.
Largest makers of Concrete Machinery in Canada