

HEADQUARTERS
MINNEAPOLIS, MINN.

CANADIAN ADDRESS
GODERICH, ONTARIO

J. H. TROMANHAUSER
ARCHITECT AND BUILDER
GRAIN ELEVATORS

Patent System of Fireproof Concrete Construction.

Goderich, Ont., Feb. 15th 1906.

Mess. W. H. C. Mussen and Co.,
Montreal, Que.

Gentlemen,

In compliance with your request, I am today sending you under other cover, Photo of the two Mixers, as we are using them in the construction of the Elevator here.

As to the Machines themselves, there is little to say, they are all right, our mixing is the easy end of the work. To get a place fixed up to put the concrete into is our trouble.

We think the two machines set side by side is the correct thing to get a constant even flow of fresh mixed concrete. We are driving the two mixers with a 5 1/2" engine, mixing batches of 8 cubic feet each. No mixing outfit could be much better than ours, or give less trouble. Yours Truly,
J. H. Tromanhauser.

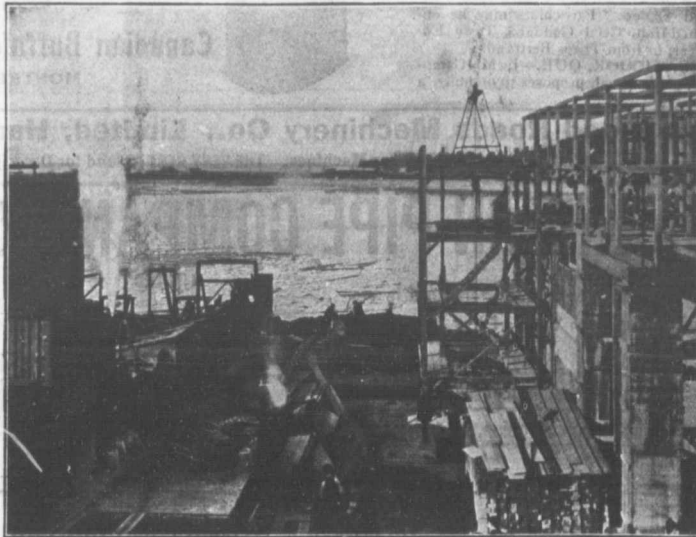
SMITH MIXERS

Do the work and give
no trouble

That is why they are used on practically every concrete contract of importance.

We supply them in all capacities, and with mountings to suit any requirements.

Give us an idea as to the work you wish to do.



This shows the two Smith Mixers to which Mr. Tromanhauser refers at work on his contract at Goderich. Note the Sterling Roller Bearing Barrows.

W. H. C. MUSSEN & CO.

Railway, Mining, and Contractors' Supplies

MONTREAL