

COPPER.

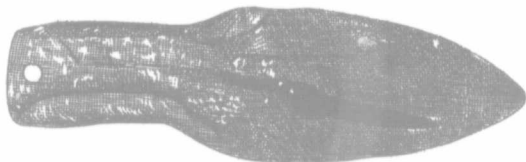


FIG. 14.

Fig. 14 represents a spearhead of copper found in Lanark county, and presented by Dr. T. W. Beeman. It is provided with a socket. The blade is thin and flat on both sides. It is peculiar in having a hole at the head of the socket as if to aid in fastening the handle. This hole may be of recent origin.

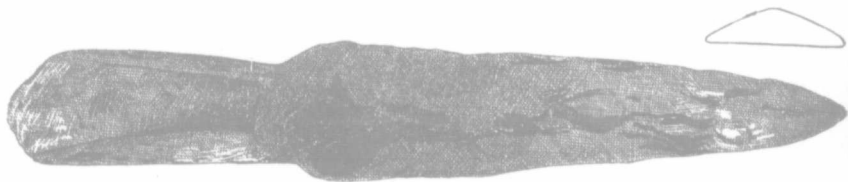


FIG. 15.

In Fig. 15 we have what represents a very fine specimen of native copper weapon. Like the specimen shown at Fig. 14 it is provided with a socket which is neatly formed. The side of the blade shown is flat, the opposite side is ridged as shown in cross section in the diagram. This specimen also was presented by Dr. T. W. Beeman.