

fresh ground to pick over for insects, seeds, worms, etc. There is no reason, too, why, if we have a little plot of grass or miniature lawn, the birds should not have their turn on that also. Fowls love a grass run. It is no use trying to turf in a small run, the green will soon disappear. If, however, the run is permanent and large enough to be divided into two divisions one half may be turfed and the birds allowed on it for an hour or two daily.

Two-inch mesh wire is the best for fencing in a fowl run. No wiring above is necessary if the sides are made 5 feet in height for heavy fowls and 8 feet for Leghorns and Hamburgs and lighter flying birds.

### Typhoid Fever.

Typhoid fever has an eruption peculiar to itself, which may be found in a little more than half of the cases. This eruption is most often present at the beginning of the second week of the disease and should be looked for especially on the abdomen. It consists of small, rose-colored spots and they come in crops which last about three days—then they fade, and another crop appears; this may keep up for a week. If there is a relapse of the fever, then there is a return of the spots also.

In cases resembling the adult type of typhoid fever the temperature runs a typical course. It generally grows higher every day for a week, fluctuates from one to three degrees the second week, and then gradually grows lower the third week, often reaching normal at the end of this time. In other cases among young children the temperature does not run the typical course but jumps at once to quite a height. In mild cases we may expect the temperature to be 103 or 104 degrees when at its highest point, and in severe cases to be 105 or even 106 degrees. Relapses not infrequently occur.

The nervous symptoms in children may be quite marked; there is often delirium, headache or stupor. Hemorrhages from the bowels and perforations of the intestines are quite rare in children.

There is a certain test of the blood in typhoid fever that is of great value in deciding surely what the disease is. This is called the "Widal serum test" and must be made by an expert doctor. It is not always found, even in true cases, but when it is found there can be no further doubt of the nature of the disease. Sometimes it is necessary to make this blood test many times before it can be found positively, and a mother should always be willing to have the doctor take a specimen of the blood of the child as often as he deems necessary.

In the treatment of typhoid fever absolute quiet and rest in bed are essential. No matter how mild the attack may be, the child must be put to bed at once and kept there while there is the least fever and for several days after this period is over. Keep every one out of the sick-room except the one needed to nurse the child.

The diet must be fluid for three or four weeks. Milk in some form is usually given every three hours. For young children this should be diluted, or koumyss or matzoon may be used as a change. It is often advisable to peptonize the milk partly, or to add Vichy to it if the stomach is at all irritable. Pure water should be given between meals. A number of doctors within the last few years have given their patients gruels made from rice, wheat or barley, flavoring these with a little mutton or chicken broth, and cutting off all milk while the fever lasts. The gruels may be dextrinized if they seem to cause any extra gas or distention of the abdomen.

The fever should be controlled by cool sponge-baths; an ice-cap, or, if it is very high, a cold pack may be given. Whenever the temperature reaches 103 degrees it is usually well to employ one of these methods to reduce it. They are less exciting and exhausting to the little patient than a full tub-bath. Medicines are sometimes needed for the bowels or other symptoms, but they must, of course, be given strictly according to the doctor's orders.

All movements from the bowels and also the urine must be carefully disinfected in a solution of bichloride of mercury, 1-1,000, before they are thrown down the closet. Bed-linen, night-dresses, etc., should also be disinfected and then boiled for two hours separately from the clothing of the rest of the family. The nurse must be careful to wash her hands thoroughly in soap and water after handling the patient, and disinfect them frequently.

### A Darks Dialogue.

In a Southern town one morning a colored man called upon a neighbor. He was met at the door by his friend's wife, and the dialogue ran something like this:

"Kinder cold dis mawnin'!"  
"Kinder. Think mebbe it's gwine to rain."  
"Mebbe it is. Is Dan in?"  
"Shore; he's in."  
"Kin I see him?"  
"No, sirree!"  
"But I wants to see him bad."

"It's sorry, but you can't see him. Dan's dead."

"Go 'way! You's jokin'!"  
"No, I ain't jokin'. He's dead all right."

"He die sudden?"  
"He die very sudden."  
"Yo' shore 'bout dat?"  
"Jest as shore as I kin be."

At this point the caller hesitated a moment, and then added: "He say anything 'bout a bucket o' whitewash befo' he died?"

### A Good Reason.

"Why didn't you put on the porous plaster I sent you?"  
"Plaster! Docthor, I'm a member ov th' Hod Carriers' Union, and it's against th' rules for me to do anny plasterin', except in th' reg'lar workin' hours."

### A Matter of Spelling.

A well-known actor was rehearsing a company of supers in a projected performance of "Richard II." In all his reproductions he takes the greatest pains

to have his crowds as life-like as possible. After he had allotted most of the supers to their several places, he said:—"Now, at this place the corpse is brought on. I want some men for the bier."

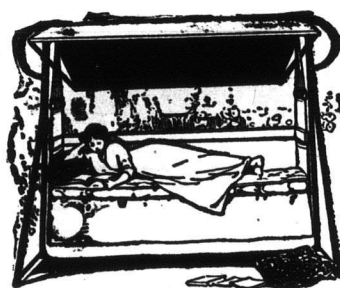
Immediately there was a rush forward, and it was not until the actor-manager had explained that he spelled the bier with an "i," not an "e," that calm was restored.

### Taking Precautions.

Visitor: "Well, Tommy, what will you be when you grow up?"  
Tommy (aged nine): "A soldier."  
Visitor: "But you will be in danger of getting killed."  
Tommy: "Who'll kill me?"  
Visitor: "Why, the enemy."  
Tommy: "Then I'll be the enemy."

It is Wise to Prevent Disorder.—Many causes lead to disorders of the stomach and few are free from them. At the first manifestation that the stomach and liver are not performing their functions, a course of Parmelee's Vegetable Pills should be tried, and it will be found that the digestive organs will speedily resume healthy action. Laxatives and sedatives are so blended in these pills that no other preparation could be so effective as they.

## The "IDEAL" Hammo-Couch



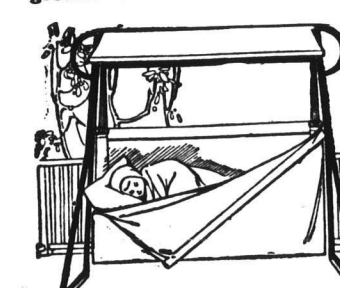
ON THE LAWN  
Always in the shade—always comfortable. How different from the old "half-moon" kind.



ON THE PORCH  
Can be suspended from ceiling. Room and strength enough to hold three or four persons.



IN THE CAMP  
A portable bed that keeps you off the ground—wind protection all round.



THE BABY BUNTING  
A smaller size, for baby's out-door naps. Wind-shield all round keeps him safe and comfortable.



THE SPRING  
Famous Simmons fabric, with fourteen spirals at each end. Strong, resilient. Experience has demonstrated superiority of this construction.



THE FRAME  
Note construction. 1½-inch steel tubing, supporting spring from ends, leaving no unyielding edge. Strongest and most comfortable.



Compare the "IDEAL" Hammo-Couch with any other "couch hammock" offered you. You'll find it excels in every point of comfort, strength and durability. For example:

Frame of the "IDEAL" Hammo-Couch is round 1¼ inch steel tubing, connected at the ends with angle steel. (See illustration below.) Other couch hammocks have an uncomfortable, insecure wooden frame, which may break under weight of several persons.

Spring in the "IDEAL" Hammo-Couch is the famous Simmons fabric—suspended from the ends, free of frame, no contact with hard edges as on other kinds. Every move of occupant yields ease and rest.

The back of the "IDEAL" Hammo-Couch is just right height for perfect comfort. A light slat, concealed in top edge of wind-shield, gives sure support. Other kinds have an unsupported, "baggy" flap, which you cannot lean against.

Seat is just the right width for either sitting or reclining position. Other kinds are suitable only for one person lying down. Mattress cushion is 3 inches thick, filled with soft, sanitary cotton. High quality, khaki-colored duck is used throughout. Magazine pockets securely sewed and riveted to each end of couch. Adjustable canopy sun-shade is another exclusive feature.

Length is 6 feet; width, 2 feet 2 inches. Sold with the steel frame support for use on lawn, or without frame when to be hung from verandah roof. Easily carried from place to place.

Write for Free Booklet H 12 and name of store where you can see one.



The genuine Hammo Couch bears this Trade Mark. Be sure it is on the one you buy.

THE IDEAL BEDDING CO. LIMITED  
22 JEFFERSON AVENUE, TORONTO