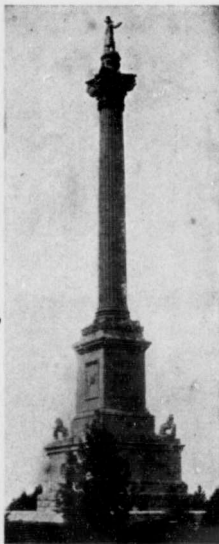


the way may be made if desired. At Brock's Monument a beautiful view is to be had from the terrace, while from the monument itself, the panorama spreads out in surpassing beauty. The Duke of Argyle pronounced it an ample reward for crossing the Atlantic. At Queens-

ton a tablet the Prince marks the Brock fell. electric line the "Gorge and com- Prospect agara Falls, ing through the city; down the river nearly water's level, shore in imity to the lowing the stream op- Whirlpool, at Lewis- visitor who by one route by the other, better idea



BRCK'S MONUMENT.

erected by of Wales, spot where The other is known as Route," mences at Park, Ni- N. Y., pass- a portion of thence bank of the to the skirting the close prox- rapids, fol- curve of the posite the and ending ton. The goes down and returns will have a of the

Gorge than can be had by any other method. The Whirlpool will be seen from both sides, and the rapids from above and below. The latter are declared, by many visitors, to be grander and more awe-inspiring than the cataracts. The apparently resistless force of the water, its swift current and never-ceasing roar, together with the gigantic columns of spray shooting high in the air, all combine to fascinate the