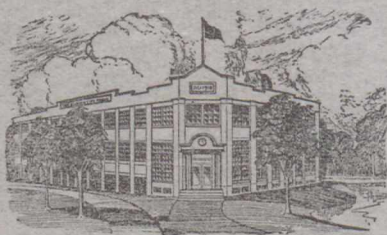


The Industrial & Educational Publishing Company LIMITED



GARDEN CITY PRESS
GARDENVALE, P. Q.

It is situated on the Toronto to Montreal and Ottawa to Montreal lines of the C.P.R. and G.T.R., adjoining Macdonald Agricultural College. The railway station on either line is St. Annes, but the post office is Gardenvale, P.Q.

*Publishers of the following Industrial and Educational
Periodicals:—*

*CANADIAN MINING JOURNAL
PULP AND PAPER MAGAZINE
CANADIAN FISHERMAN
CANADIAN TEXTILE JOURNAL
IRON AND STEEL OF CANADA*

*Equipped with Complete and Up-to-date Printing
Plants at Gardenvale, P. Q., and 263 Adelaide
St. W., Toronto, Ont., for all kinds of work.
Periodicals and Books a Specialty.*

OFFICES

HEAD OFFICE:

Garden City Press, Gardenvale, P. Q.
Phone: Ste. Annes 165.

J. J. HARPELL, President, Managing Director,
in charge.

A. S. CHRISTIE, Director, Eastern Manager.

TORONTO OFFICE:

208 King Street, West.
Phone Adelaide 3310

H. W. THOMPSON, Director, Western Manager.
Printing Plant: 263-5 Adelaide St., West,
Phone: Adelaide 917

T. W. HARPELL, Director Manager,
in charge.

GARDENVALE, Que.

March 12th., 1923.

Sir Arthur Currie,
Principal, McGill University.
Montreal. Que.

Dear Sir Arthur:-

On my return here I received your esteemed favour of the 23rd., ultimo, accompanied by copy of a letter you were good enough to send Dr. Harrison.

I have not yet had an opportunity of calling on Dr. Harrison, but expect to do so in the next two or three days.

The small Volume outlining our work here which I promised to send you has been somewhat delayed, but I expect to finish it ~~up~~ and get it to the press almost immediately, and as soon as I have a copy will send one to you.

Thanking you for your good wishes and kind offices, I am

Yours very truly,

JJH/EA.