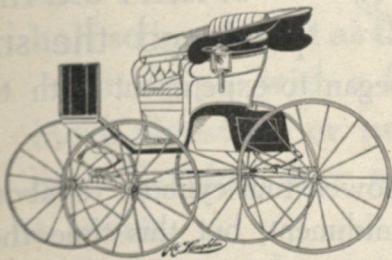


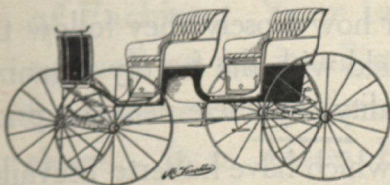
McLAUGHLIN



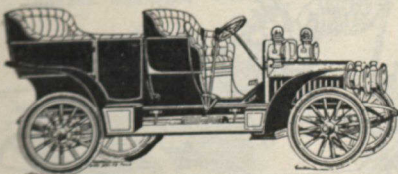
WAGONS



STANHOPE



SURRIES and



AUTOMOBILES

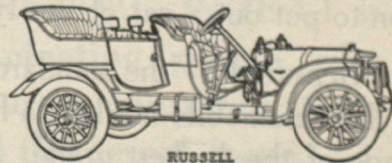
40 Years experience goes into every vehicle we build as well as a positive guarantee. Factory capacity, 1 complete vehicle every 10 minutes.

McLAUGHLIN CARRIAGE CO.
OSHAWA, ONT.

The Reliable Russell

¶ That pre-eminent factor called experience is the rock-bottom foundation upholding every Russell Model. The outstanding success during the past year amply demonstrates the all-round efficiency of Russell construction.

¶ The powerful, smooth-running motors are correctly designed along engineering lines, built of the best material and thoroughly tested by skilled experts; selective type of sliding gear transmission; all gears and shafts of special nickel steel; metal-to-metal clutch; double brakes, positive in action and easy to disengage; shaft drive; the axles are strong and serviceable; the long wheel-base and thirty-six inch wheels, together with the artistic and graceful body, create what has been termed a Motor Car Thoroughbred.



RUSSELL

4—MODELS—4

- G. Two-cylinder, Opposed, 18 H.P. \$1,600
- L. Four-cylinder, Vertical, 24 H.P. \$2,000
- H. Four-cylinder, Vertical, 30 H.P. \$2,500
- K. Four-cylinder, Vertical, 50 H.P. \$4,500

Canada Cycle & Motor Co.
LIMITED

Toronto Junction, Canada

Ottawa Toronto Hamilton Winnipeg Vancouver Melbourne

Write for the **RUSSELL Catalogue de Luxe**