

# The Canadian Entomologist.

VOL. VI.

LONDON, ONT., AUGUST, 1874.

No. 8

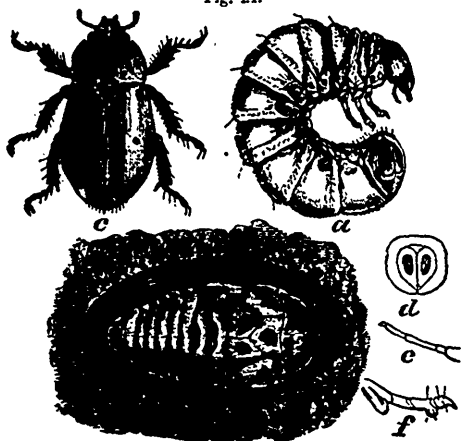
## ON SOME OF OUR COMMON INSECTS.

### 18.—THE SPOTTED PELIDNOTA—*Pelidnota punctata*, Linn.

BY THE EDITOR.

This large and handsome beetle is an enemy to the grape vine. It attacks the foliage, eating numerous holes in the leaves, and sometimes

Fig. 24.



when the beetles are abundant, completely riddling them. Damage from this cause to any great extent is however, fortunately of rare occurrence; in most instances the beetles are not numerous, but even where only occasionally met with, their size and beauty will always attract notice.

In the accompanying figure 24 (after Riley) this insect is shown in its three stages of

larva (*a*), chrysalis (*b*), and beetle (*c*); it is in the latter state only that it is injurious to the vine.

The beetle measures about one inch in length, and half an inch in width at its widest part, is nearly oval in form and of a dull reddish yellow color, with a polished surface. The thorax, which is slightly darker than the wing covers, has a small black spot on each side, and there are three larger ones on each wing case. The jaws and posterior part of the head are both black; so also is the scutellum, which is a small, nearly triangular piece placed near the centre above, just where the two anterior edges of