

The Pulsometer
STEAM PUMP

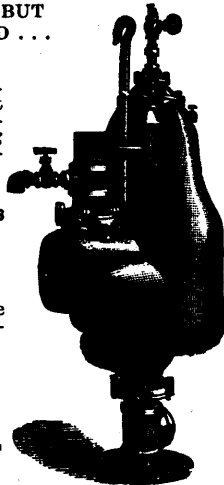
OFTEN IMITATED BUT
NEVER EQUALLED ...

...
The handiest simplest and most efficient steam pump for general Mining, Quarrying and Contractors' purposes.

...
Muddy or Gritty Liquids
Handled without wear.

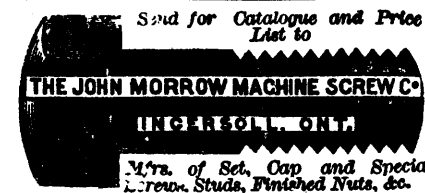
...
Descriptive Catalogue with prices, furnished on application.

...
PULSOMETER
Steam Pump Co.
New York, U.S.A.



A. R. Williams Machinery Co.

Toronto and Montreal,
Selling Agent for Canada.



Emery
Emery Wheels, Grinding Machines, Grinders' Supplies ...
Quick process and large stock.

WHEN IN A HURRY
ORDER OF

The Tanite Co., Stroudsburg, Monroe Co., Pa., U. S. A.
New York, 161 Washington Street.
Cincinnati, 1 West Pearl Street.
London, Eng., 1 hos. Hamilton, 90 Cannon St., E. C.

Leitch & Turnbull

Canada Elevator Works,
Queen and Peter Streets, Hamilton, Ont.
Patent Safety Hydraulic Hand and ... **POWER ELEVATORS**
Telephone Connection.

McLAUGHLIN BROS.
TEASELS
Skaneateles Falls
NEW YORK
BUSINESS ESTABLISHED IN 1832

THE ...
A. R. Williams Machinery Co.

HEAD OFFICE, SOHO MACHINE WORKS, TORONTO. LTD.,

WITH BRANCHES

345-347 St. James St., Montreal. 193 Colborne St., Brantford, Ont.
and the London Machine Tool Co., London, Ont.,

Have the following first-class new and second-hand Machinery for prompt shipment :

- Planer, Matcher and Moulder, "Eclipse," the manufacturer's favorite, one of the best all-round machines in the market.
- Planer and Matcher, Bowmanville Machine Co. make, long bed.
- Planer and Matcher, double, Bertram & Co. make, 1 inch feed rolls.
- Planer and Matcher, single, "Champion," good order.
- Moulder, 3 inch side, 7 inches, thoroughly rebuilt.
- Moulder, 3 inch side, 8 inches, Cant, Gourlay & Co. make, first-class order.
- Moulder, 3 inch side, 10 inches, Cowan & Co. make, endless bed.
- Moulder, 4 inch side, Ballentine & Co., new.
- Moulder, 4 inch side, 10 inches, Ballentine & Co. make, new.
- Shingle Machine, "Boss," new.
- Shingle Machine, up-right, second-hand, re-built.
- Shingle Machine, Goldie & McCulloch, automatic.
- Shingle Machine, Doherty, re-built.
- Wood-Splitter, Hildrith patent, new and complete.
- Wood-Splitter, second-hand, Hildrith.
- Pump, duplex, new, 4 1/2 inches x 2 3/4 inches x 4 inches.
- Pump, duplex, new, 5 1/2 inches x 3 1/2 inches x 5 inches.
- Pump, duplex, new, 6 inches x 4 inches x 7 inches.
- Pump, duplex, new, 9 inches x 5 1/2 inches x 10 inches.
- Pump, duplex, new, 10 inches x 6 inches x 10 inches.
- Stave and Hoop Machinery, full outfit, will be sold at a bargain.
- Shimer Matcher Heads, unsurpassed.
- Reeves Woodsplit Pulleys, sole Canadian agent.

THE A. R. WILLIAMS MACHINE CO., TORONTO.

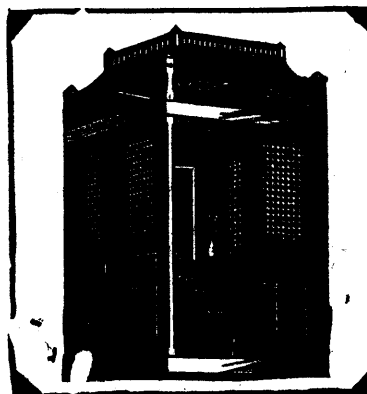


CROSBY STEAM GAUGE AND VALVE CO.

Sole Proprietors and Manufacturers of
Crosby Pop Safety Valves, for all kinds of Boilers, Water Relief Valves including the Underwriter, which is fully approved by the Associated Factory Mutual Insurance Companies; Crosby Steam Engine Indicators, with Sergeant's Electrical Attachment; Crosby Improved Steam Gauges and Patent Gauge Testers; the Original Single Bell Chime Whistles.

BRANDEN PATENT PUMP VALVES
All Kinds of Pressure and Vacuum Gages used in the Various Arts
Sole Agents for CLARK'S LINEN FIRE HOSE AND ADJUSTABLE COUPLINGS
Gold Medal Paris Exposition, 1889
Ten Highest Awards Columbian Exposition, 1893
Main Office and Works BOSTON, MASS., U.S.A.
Branch Offices at New York, Chicago, and London, Eng.

Subscribe for THE CANADIAN MANUFACTURER.



ELEVATORS

FENSOM ELEVATOR WORKS
52-54-56 DUKE ST
TORONTO.

ELECTRIC HYDRAULIC
STEAM & HAND POWER
PASSENGER & GOODS
ELEVATORS. DUMB WAITERS