

Fig. 4. — White Wyandotte chicks at about two weeks of age. A healthy chick at the back, and three white diarrhoea chicks at the front.

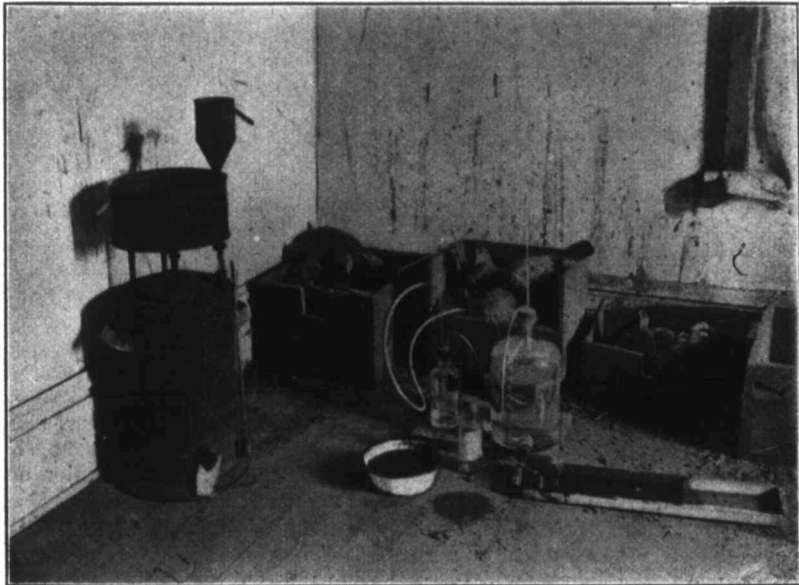


Fig. 5.—Apparatus and methods of studying Natural Incubation.

[8]

an age of th
Nearly all t
kept consta
The Ap
get out of d

Why

Early i
increase the
that by the
of gas we r
We obtaine
grow readil
known. In
with milk
incubation.
sour milk,

We tri
milk. We
was used v
been used.

After i
ens, and no
might be a
done in the
precaution
ants on ha
the second
By this we
thermomet
with this se
on the tray
mercuric cl
more freely
No other d
compounds
not had the
line. The
of our co-
Jeyes' Flui
trials are t
visiting po
Baldwin, c
to believe
bator room
was made

2 BUL